

Harris Central Appraisal District



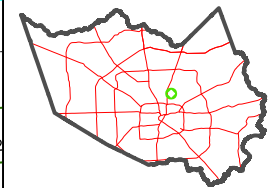
0 45 90 180 Feet

PUBLICATION DATE:
2/13/2024

Geospatial or map data maintained by the Harris Central Appraisal District is for informational purposes and may not have been prepared for or be suitable for legal, engineering, or surveying purposes. It does not represent an on-the-ground survey and only represents the approximate location of property boundaries.



MAP LOCATION

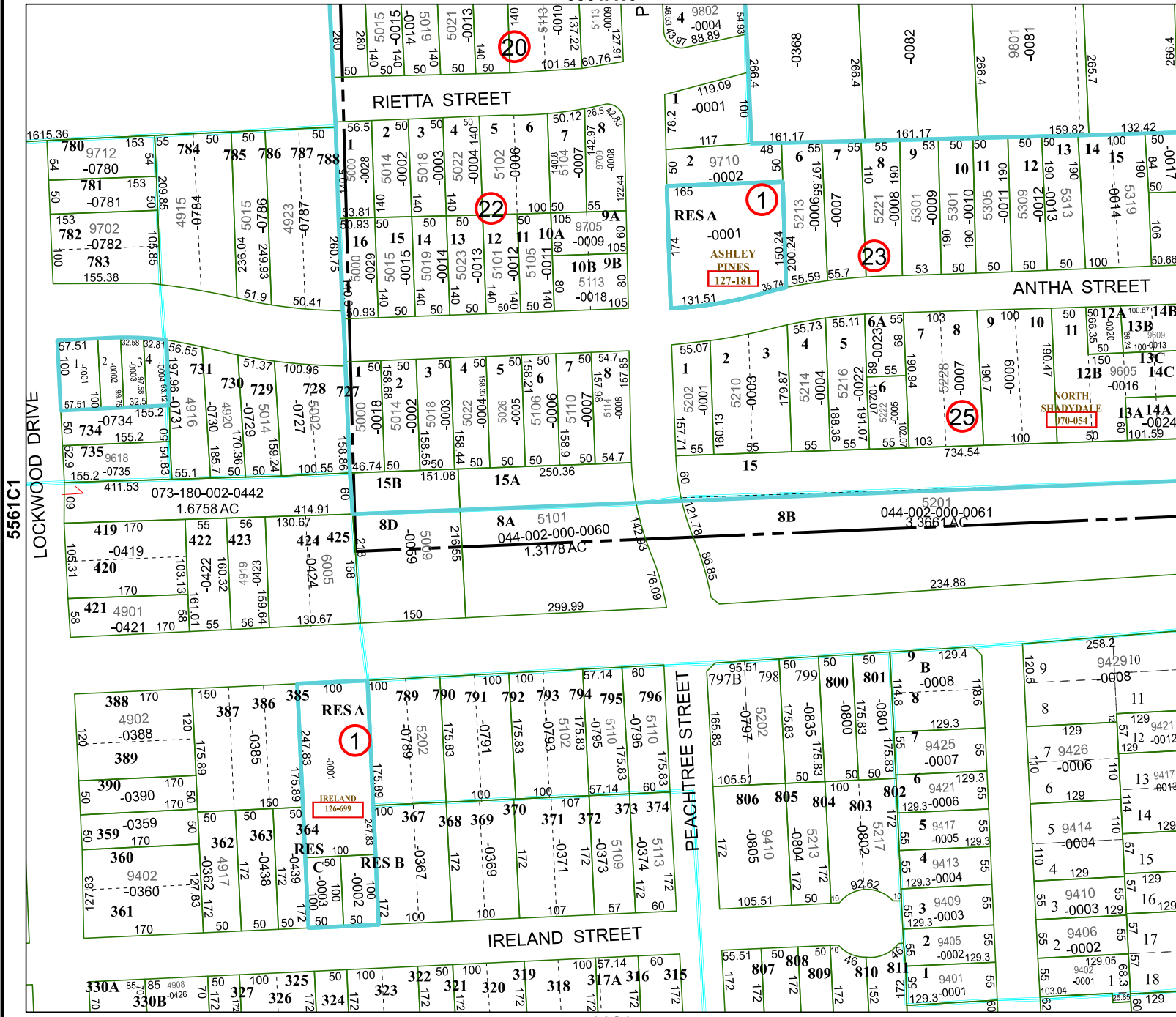


FACET 5561C2

12	9	10	11	12
4	1	2	3	4
8	5	6	7	8

5561A10

5561C6



5561C1
LOCKWOOD DRIVE

5561C3