

# Harris Central Appraisal District

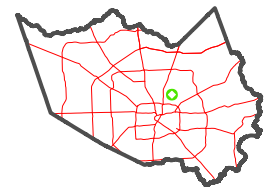


0 45 90 180 Feet

PUBLICATION DATE:  
3/11/2024

Geospatial or map data maintained by the Harris Central Appraisal District is for informational purposes and may not have been prepared for or be suitable for legal, engineering, or surveying purposes. It does not represent an on-the-ground survey and only represents the approximate location of property boundaries.

MAP LOCATION

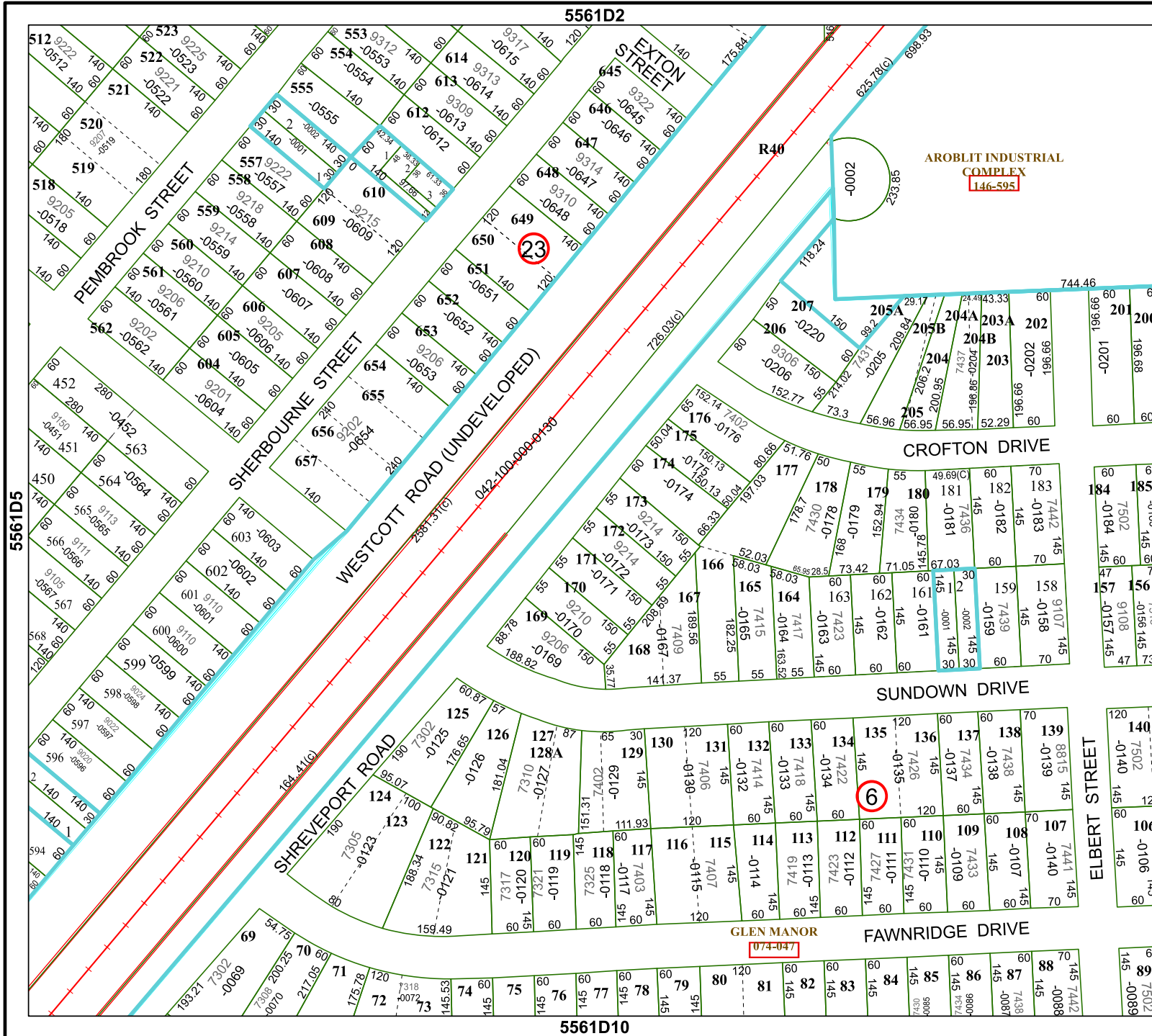


## FACET 5561D6

4	1	2	3	4
8	5	6	7	8
12	9	10	11	12

5561D2

5561D10



5561D5

5561D7

5561D8

5561D9

5561D11