

5564D10

Harris Central Appraisal District



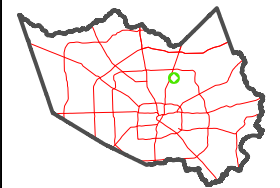
0 45 90 180 Feet

PUBLICATION DATE:
5/6/2024

Geospatial or map data maintained by the Harris Central Appraisal District is for informational purposes and may not have been prepared for or be suitable for legal, engineering, or surveying purposes. It does not represent an on-the-ground survey and only represents the approximate location of property boundaries.



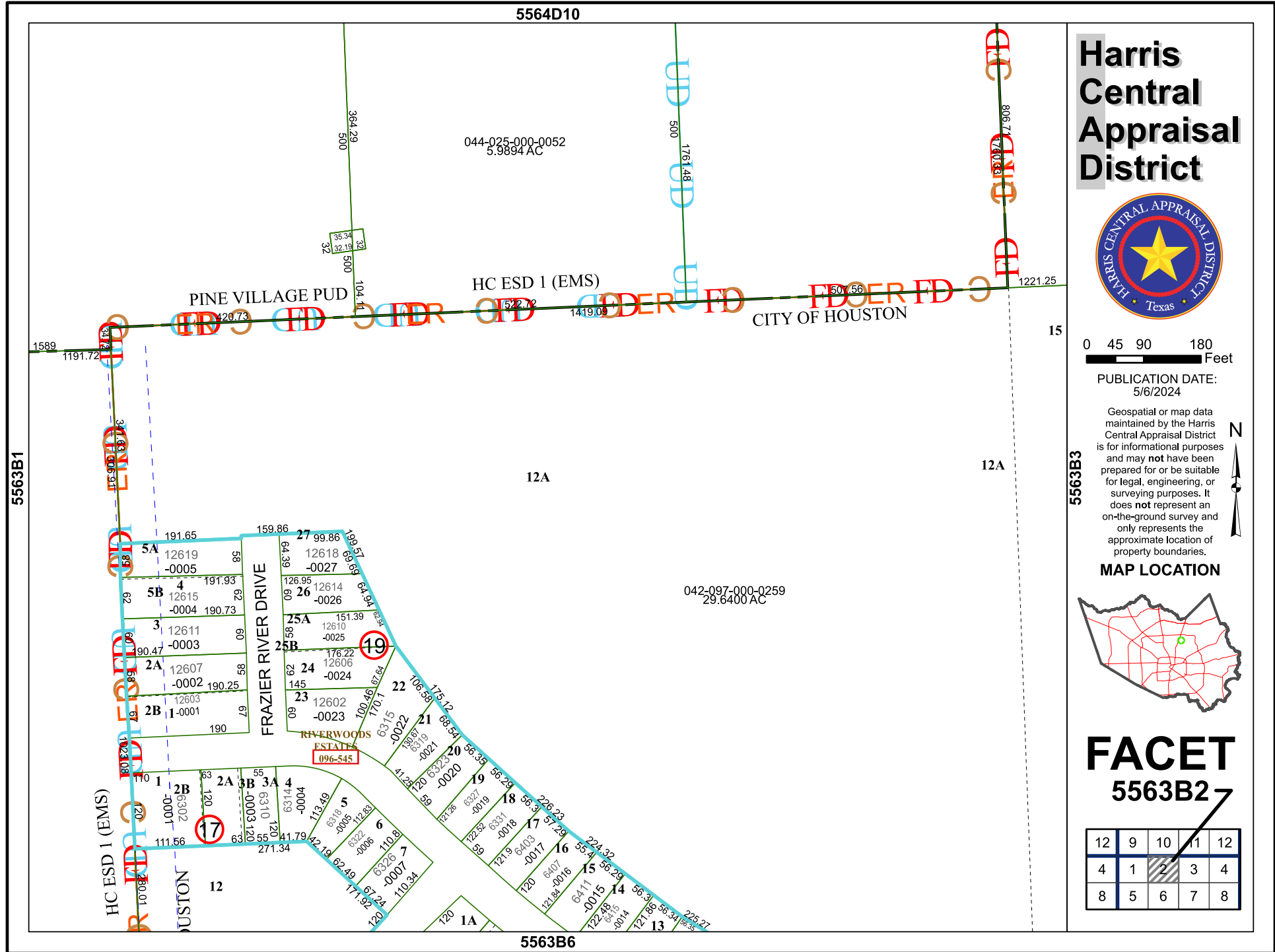
MAP LOCATION



FACET

5563B2

12	9	10	11	12
4	1	2	3	4
8	5	6	7	8



5563B6

5563B1

15

12A

HC ESD 1 (EMS)

12

PINE VILLAGE PUD

HC ESD 1 (EMS)

CITY OF HOUSTON

12A

042-097-000-0259
29.6400 AC

044-025-000-0052
5.9894 AC

FRAZIER RIVER DRIVE

RIVERWOODS
ESTATES
096-545

HC ESD 1 (EMS)

12

HOUSTON

PINE VILLAGE PUD

HC ESD 1 (EMS)

CITY OF HOUSTON

12A

042-097-000-0259
29.6400 AC

044-025-000-0052
5.9894 AC

FRAZIER RIVER DRIVE

RIVERWOODS
ESTATES
096-545