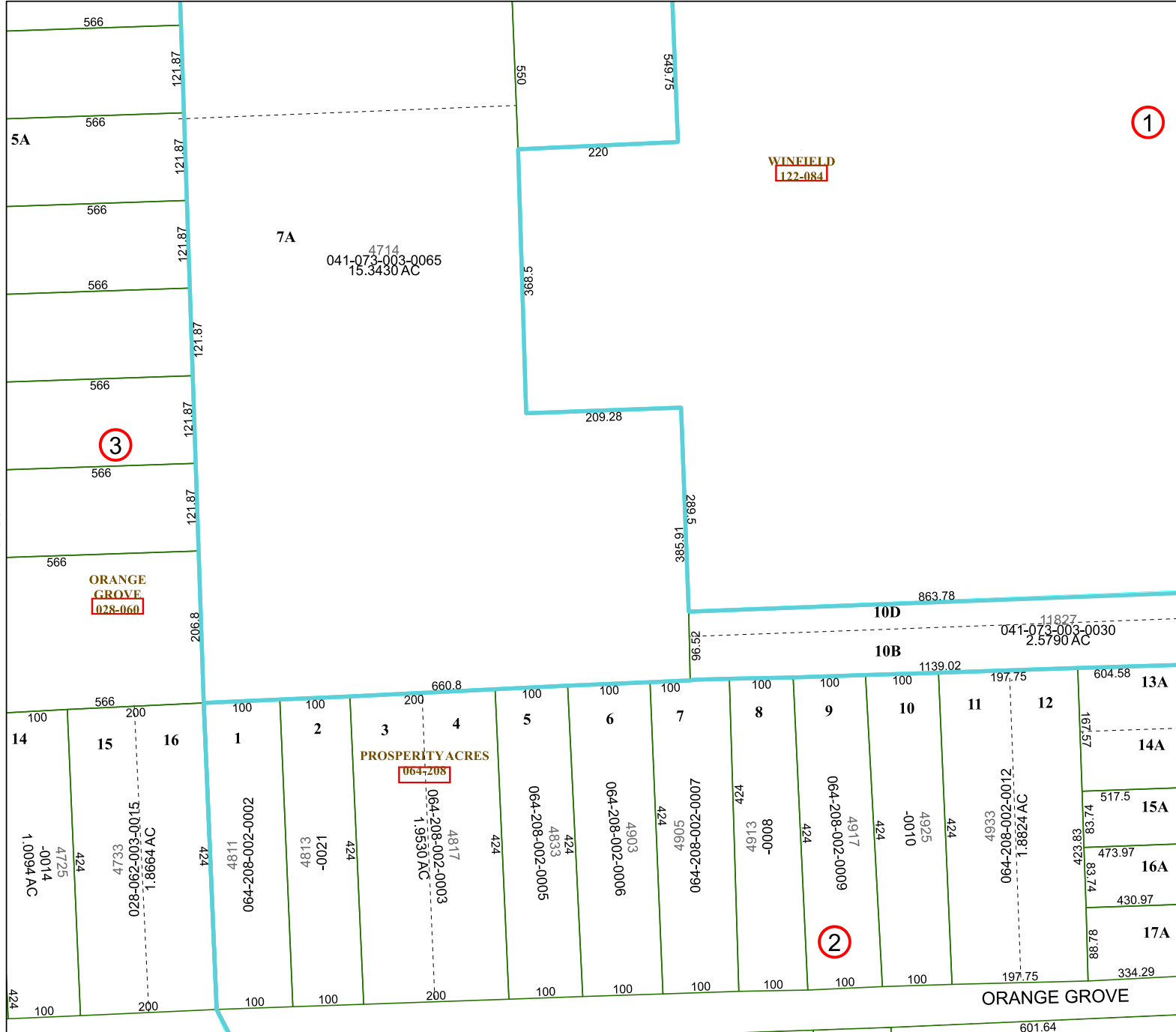


5563A9



5563C5

# Harris Central Appraisal District



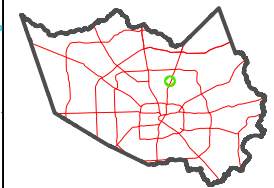
0 45 90 180 Feet

PUBLICATION DATE: 2/13/2023

Geospatial or map data maintained by the Harris Central Appraisal District is for informational purposes and may not have been prepared for or be suitable for legal, engineering, or surveying purposes. It does not represent an on-the-ground survey and only represents the approximate location of property boundaries.



MAP LOCATION



## FACET 5563C1

11	12	9	10	11
3	4	1	2	3
7	8	5	6	7

1

3

2

5463D4

5563C2