

Harris Central Appraisal District



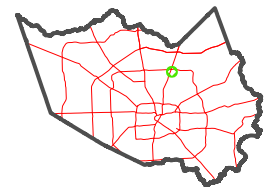
0 45 90 180 Feet

PUBLICATION DATE: 5/6/2024

Geospatial or map data maintained by the Harris Central Appraisal District is for informational purposes and may not have been prepared for or be suitable for legal, engineering, or surveying purposes. It does not represent an on-the-ground survey and only represents the approximate location of property boundaries.



MAP LOCATION

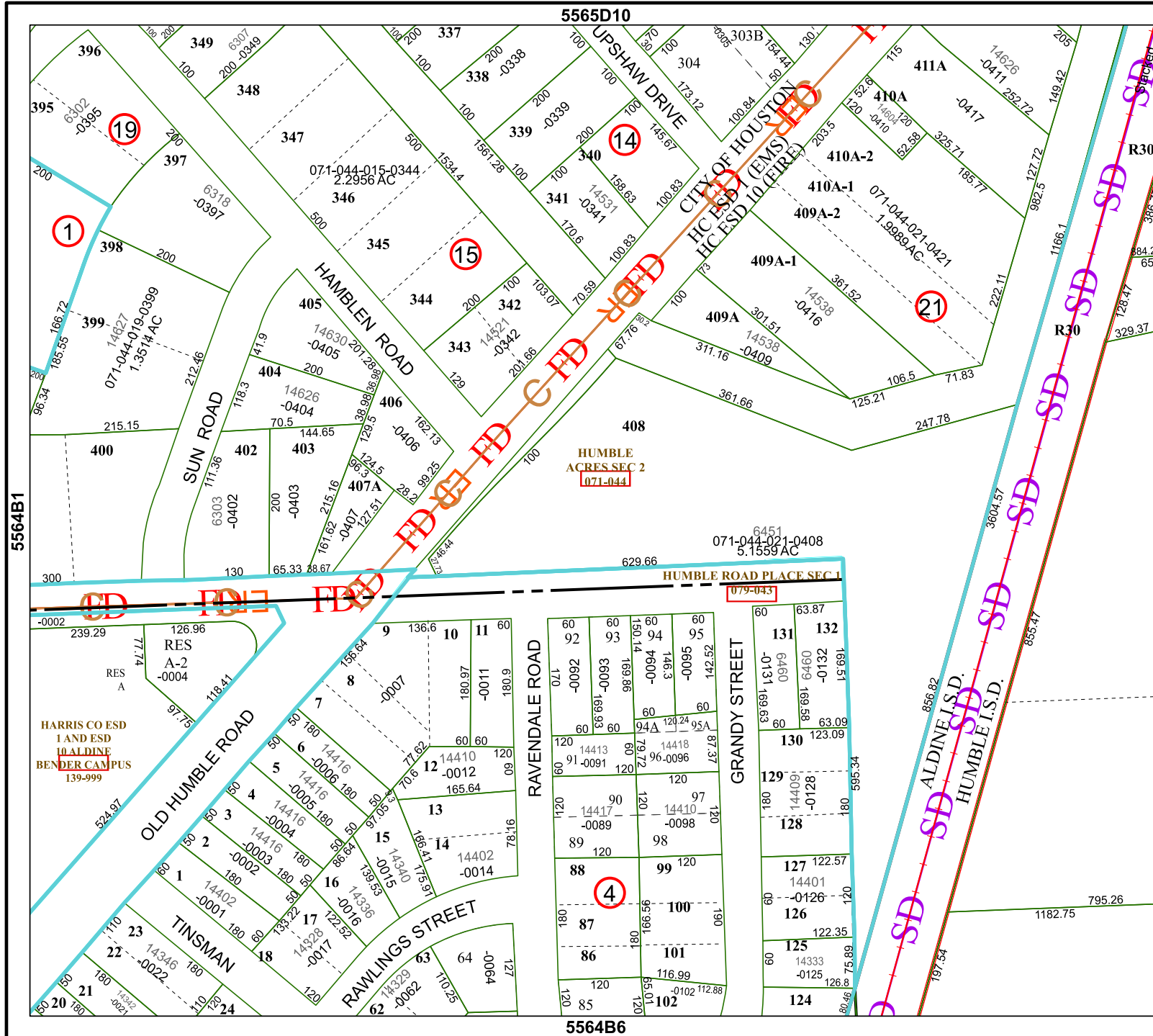


FACET 5564B2

12	9	10	11	12
4	1	2	3	4
8	5	6	7	8

5565D10

5564B6



5564B3

5564B1

HARRIS CO ESD
LAND ESD
ALDINE
BENDER CAMPUS
139-999

HUMBLE
ACRES SEC 2
071-044

HUMBLE ROAD PLACE SEC 1
079-043

SD ALDINE I.S.D.
SD HUMBLE I.S.D.