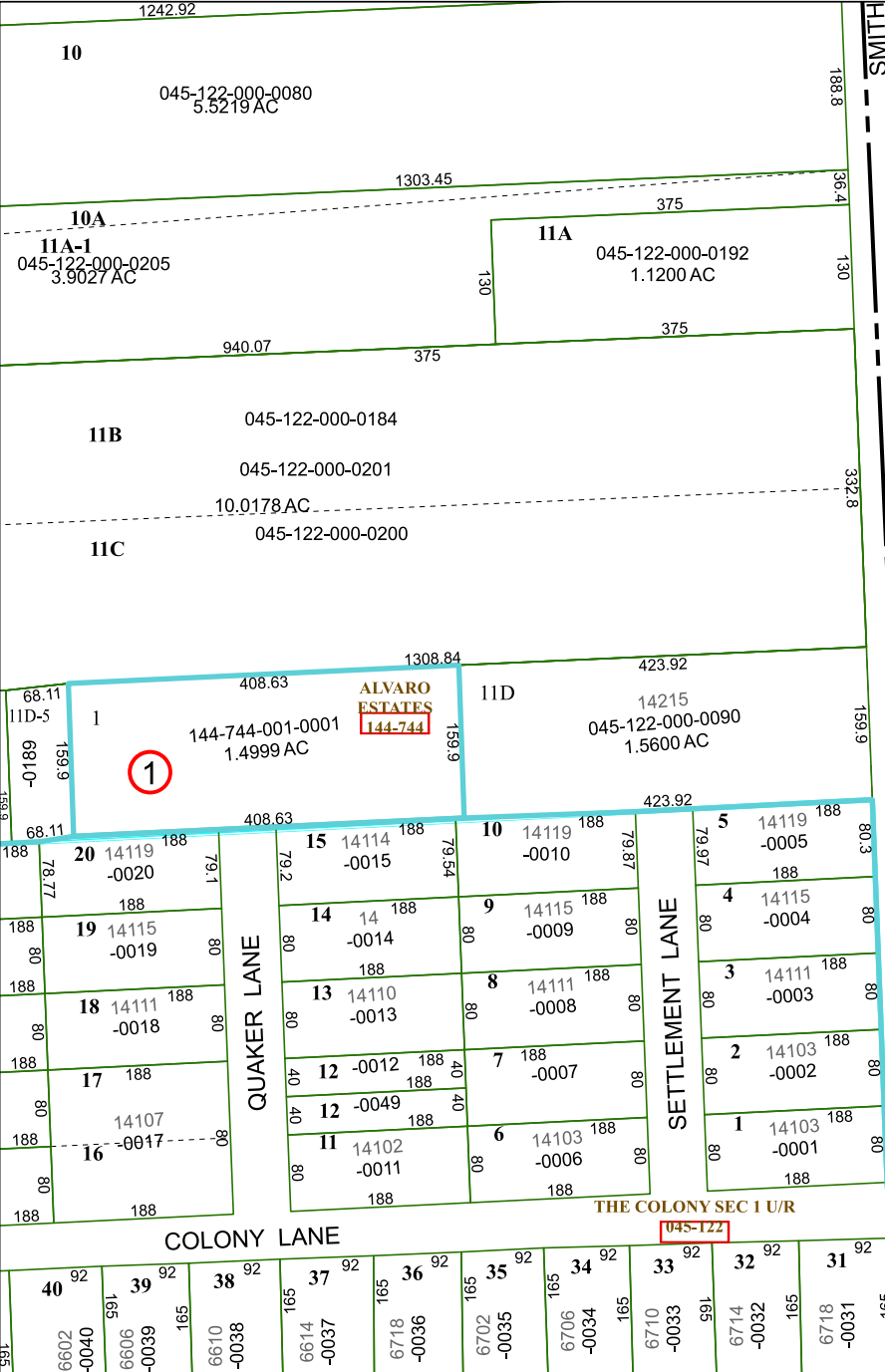


5564B3

SMITH



5564B11

1

HOUSTON SUBURBAN HEIGHTS 017-208

# Harris Central Appraisal District



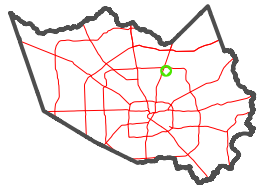
0 45 90 180 Feet

PUBLICATION DATE: 1/12/2025

Geospatial or map data maintained by the Harris Central Appraisal District is for informational purposes and may not have been prepared for or be suitable for legal, engineering, or surveying purposes. It does not represent an on-the-ground survey and only represents the approximate location of property boundaries.



## MAP LOCATION



# FACET 5564B7

1	2	3	4	1
5	6	7	8	5
9	10	11	12	9

5564B6

5564B8

2225.83

1

045-122