

# Harris Central Appraisal District

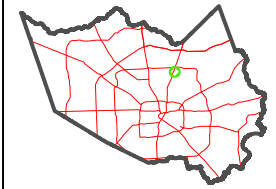


0 45 90 180 Feet

PUBLICATION DATE: 1/23/2024

Geospatial or map data maintained by the Harris Central Appraisal District is for informational purposes and may not have been prepared for or be suitable for legal, engineering, or surveying purposes. It does not represent an on-the-ground survey and only represents the approximate location of property boundaries.

MAP LOCATION



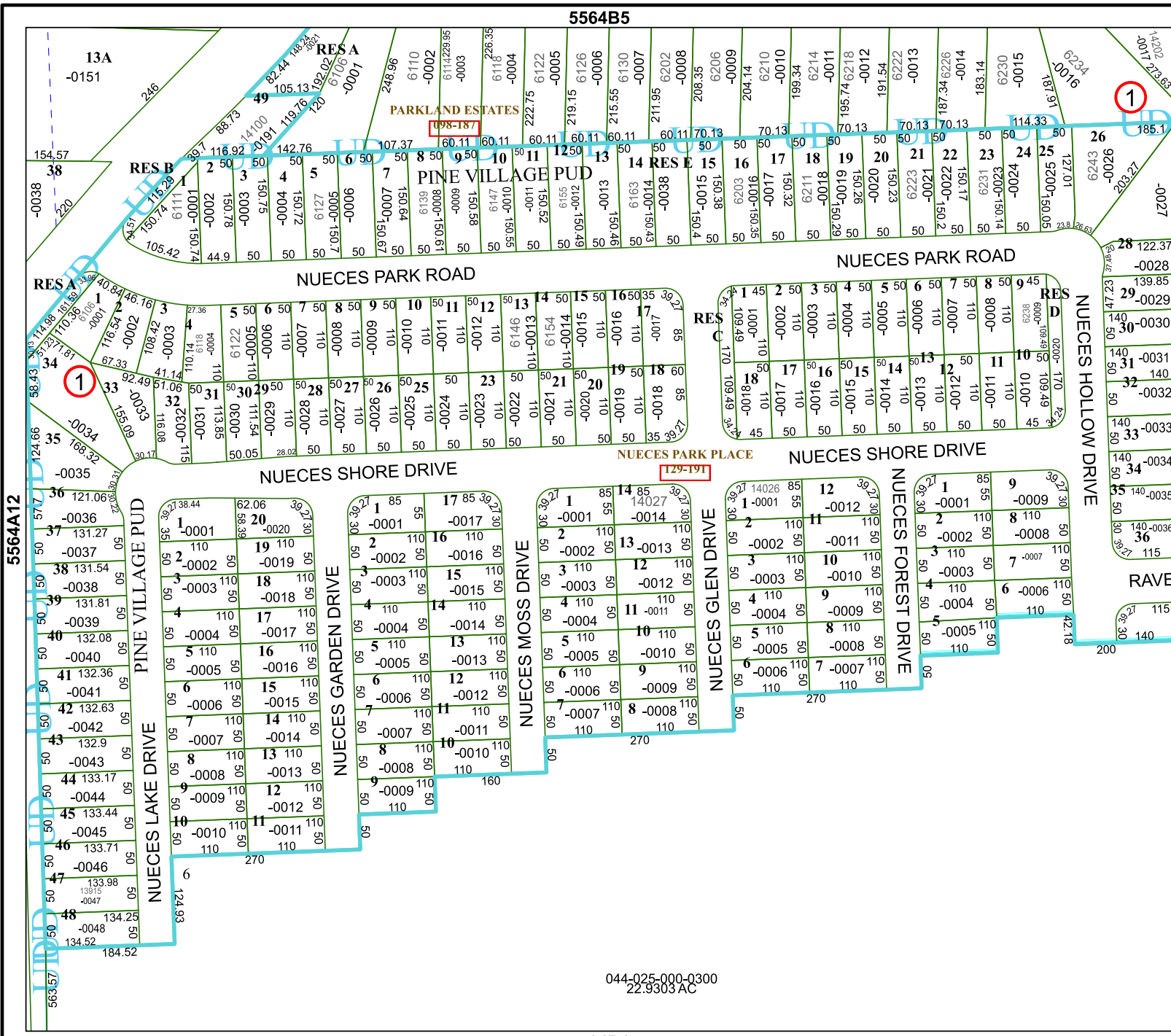
## FACET 5564B9

|    |    |   |    |    |
|----|----|---|----|----|
| 7  | 8  | 5 | 6  | 7  |
| 11 | 12 | 9 | 10 | 11 |
| 3  | 4  | 1 | 2  | 3  |

5564B5

5564D1

044-025-000-Q300  
22.9303 AC



5564A12

5564B10