

5566D12

042-158-000-0013
11.9840 AC

957.49

Harris Central Appraisal District



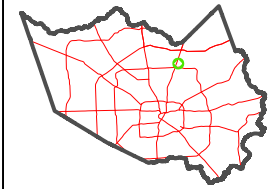
0 45 90 180
Feet

PUBLICATION DATE:
1/9/2023

Geospatial or map data maintained by the Harris Central Appraisal District is for informational purposes and may **not** have been prepared for or be suitable for legal, engineering, or surveying purposes. It does **not** represent an on-the-ground survey and only represents the approximate location of property boundaries.



MAP LOCATION

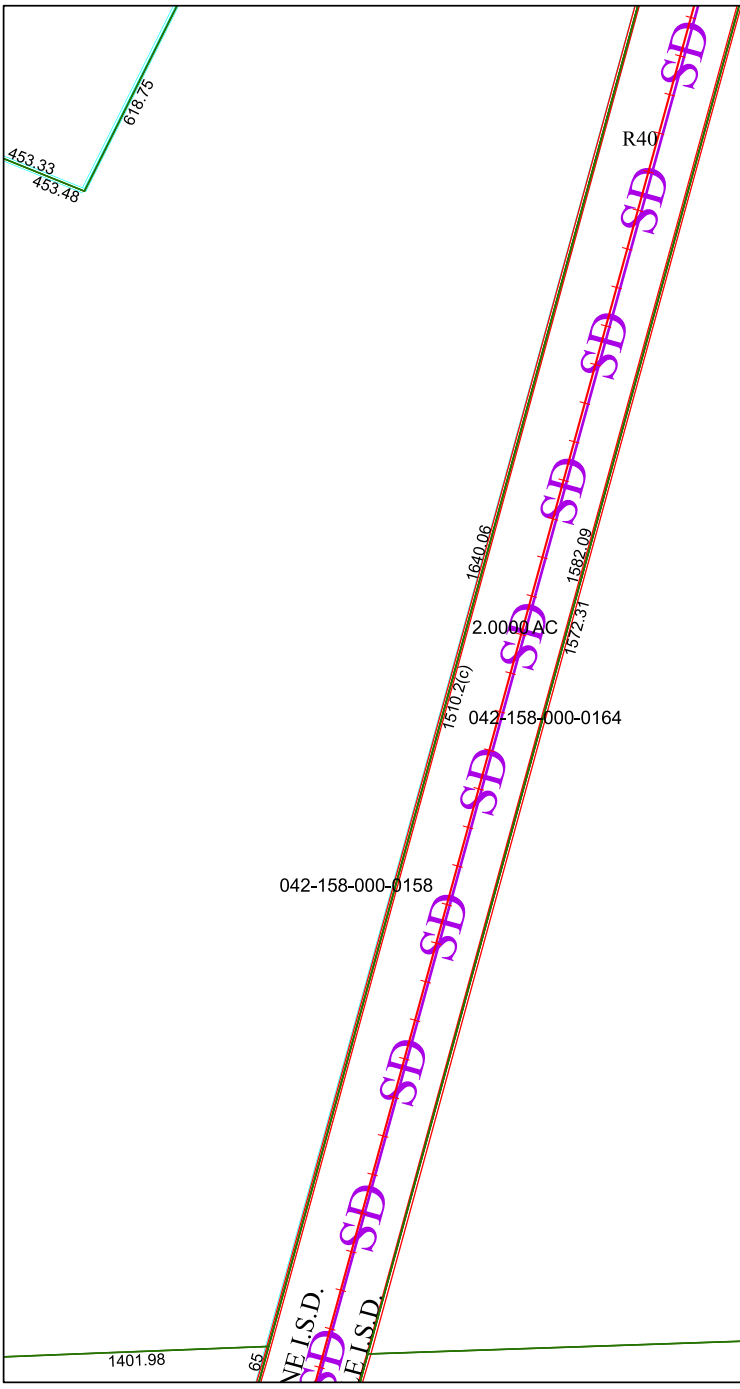


FACET 5565B4

10	11	12	9	10
2	3	4	1	2
6	7	8	5	6

5565B3

5665A1



1401.98

65

NE 1/4 S.D.
E 1/4 S.D.

1570-2(c)

1640.06

2.0000 AC

1572.31

1582.09

R40

1992.15

2007.97

215.67

165.49

5565B8