

5565B11

60' P

Harris Central Appraisal District



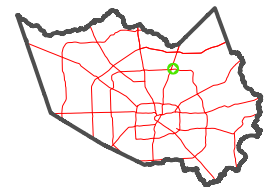
0 45 90 180 Feet

PUBLICATION DATE: 5/6/2024

Geospatial or map data maintained by the Harris Central Appraisal District is for informational purposes and may not have been prepared for or be suitable for legal, engineering, or surveying purposes. It does not represent an on-the-ground survey and only represents the approximate location of property boundaries.



MAP LOCATION



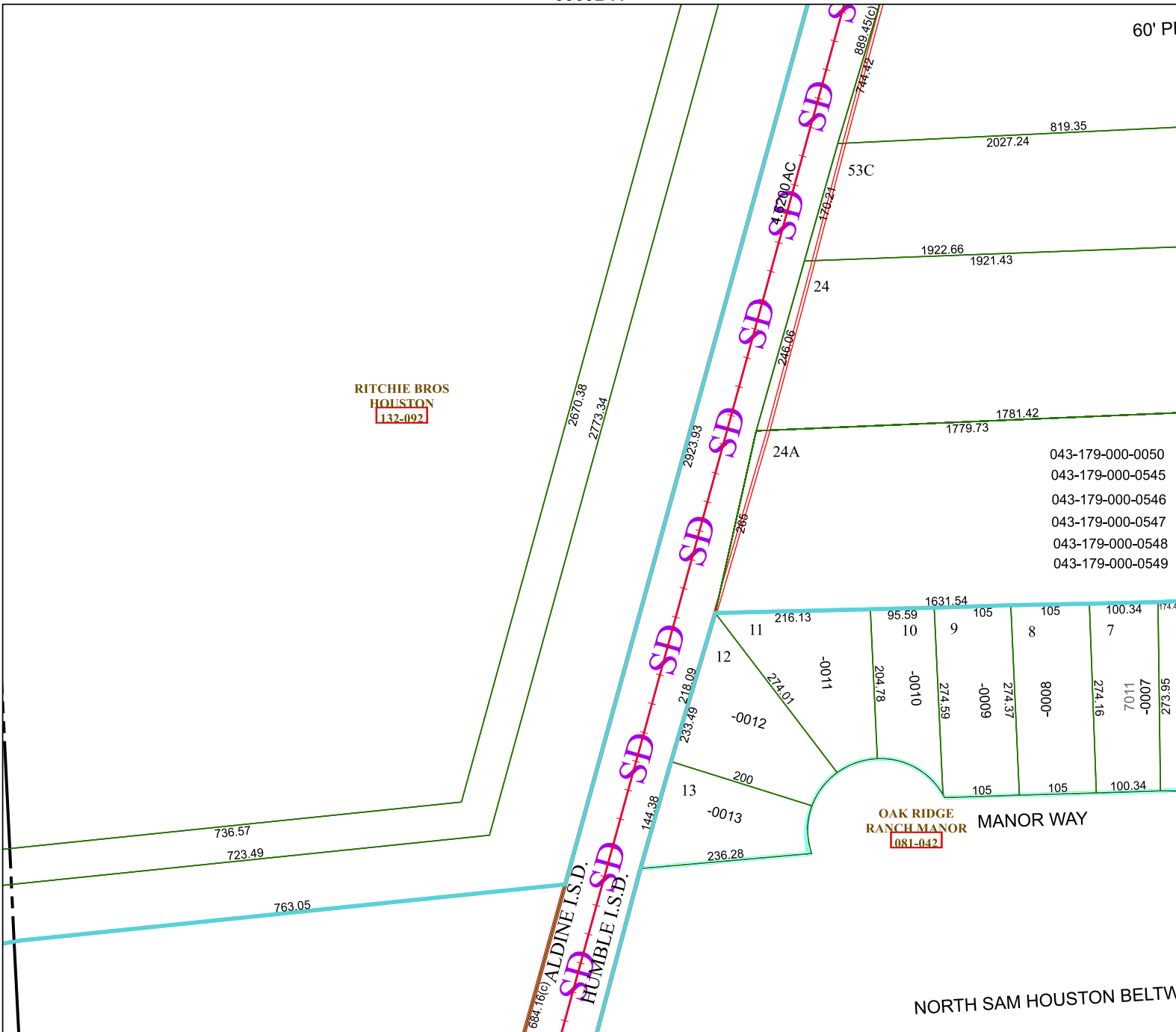
FACET 5565D3

9	10	11	12	9
1	2	3	4	1
5	6	7	8	5

5565D2

RITCHIE BROS HOUSTON
132-092

5565D7



- 043-179-000-0050
- 043-179-000-0545
- 043-179-000-0546
- 043-179-000-0547
- 043-179-000-0548
- 043-179-000-0549

OAK RIDGE RANCH MANOR WAY
081-042

NORTH SAM HOUSTON BELTWAY

5565D4