

5566C7

10

5566C10

1674

24

041-097-000-0165
83.2200 AC

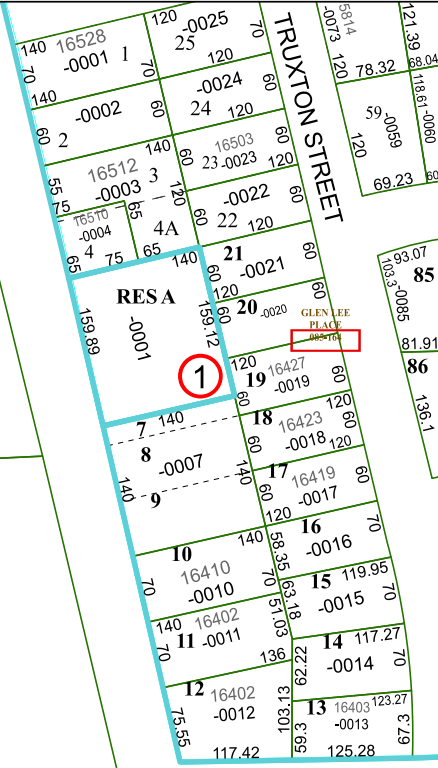
5565A3

685.42

1520

2277.98

1485.02



Harris Central Appraisal District



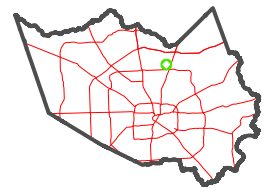
0 45 90 180 Feet

PUBLICATION DATE:
12/30/2023

Geospatial or map data maintained by the Harris Central Appraisal District is for informational purposes and may not have been prepared for or be suitable for legal, engineering, or surveying purposes. It does not represent an on-the-ground survey and only represents the approximate location of property boundaries.



MAP LOCATION



FACET 5566C11

5	6	7	8	5
9	10	11	12	9
1	2	3	4	1