

Harris Central Appraisal District



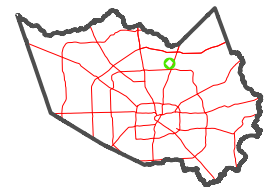
0 45 90 180 Feet

PUBLICATION DATE:
4/22/2024

Geospatial or map data maintained by the Harris Central Appraisal District is for informational purposes and may not have been prepared for or be suitable for legal, engineering, or surveying purposes. It does not represent an on-the-ground survey and only represents the approximate location of property boundaries.



MAP LOCATION



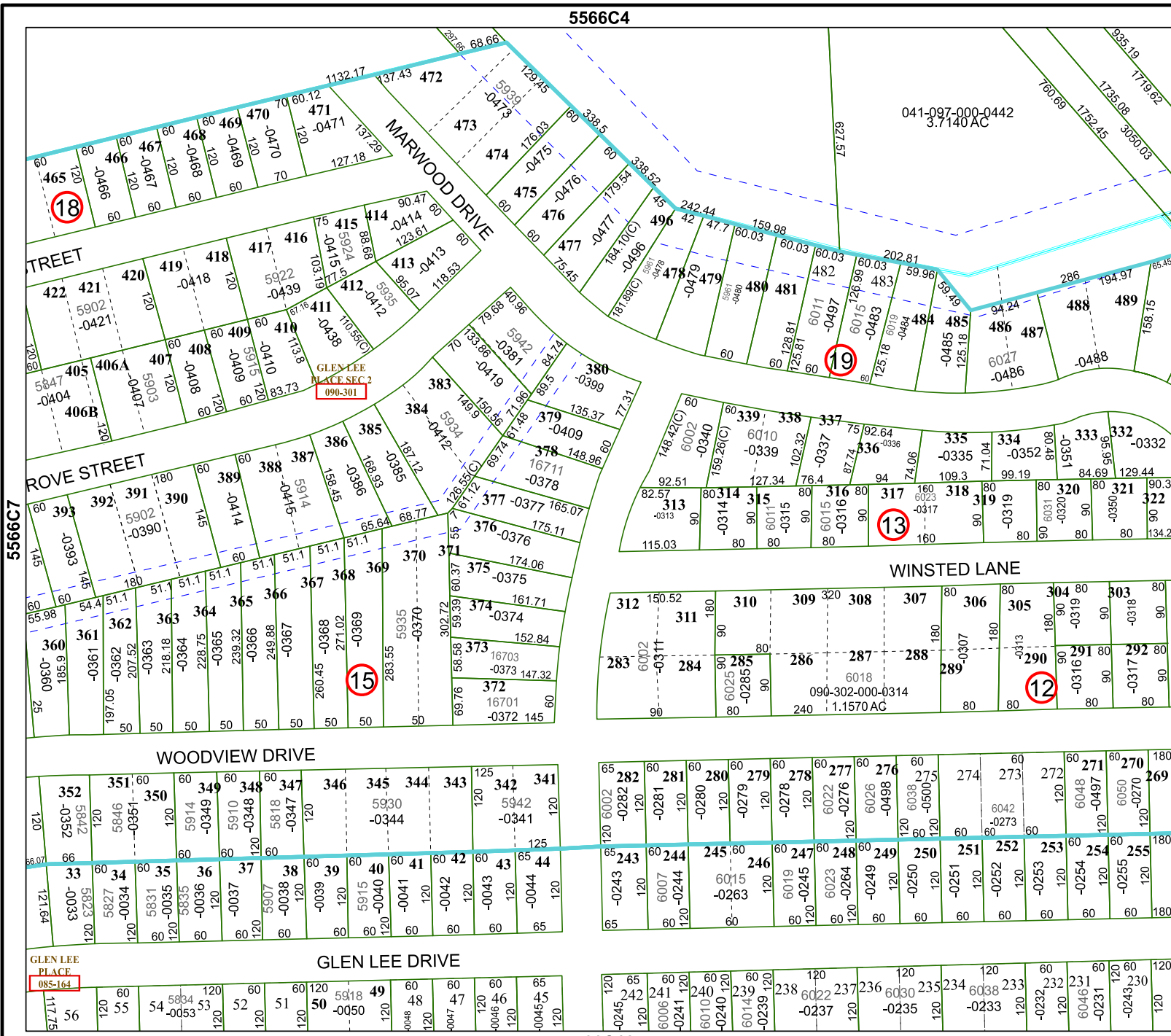
FACET

5566C8

2	3	4	5	6
6	7	8	9	10
10	11	12	13	14

5566C4

5566C12



5566D5

5566C7

GLEN LEE PLACE 085-164

GLEN LEE PLACE SEC 2 090-301

041-097-000-0442
3.7140 AC

090-302-000-0314
1.1570 AC