

5567B10

HOUSTON INTERCONTINENTAL
TRADE CENTER EAST SEC 2
140-846

140-846-001-0002
25.4900 AC

Harris Central Appraisal District



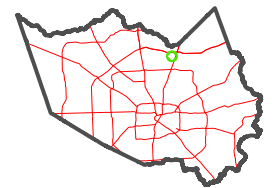
0 45 90 180
Feet

PUBLICATION DATE:
1/9/2023

Geospatial or map data maintained by the Harris Central Appraisal District is for informational purposes and may not have been prepared for or be suitable for legal, engineering, or surveying purposes. It does not represent an on-the-ground survey and only represents the approximate location of property boundaries.



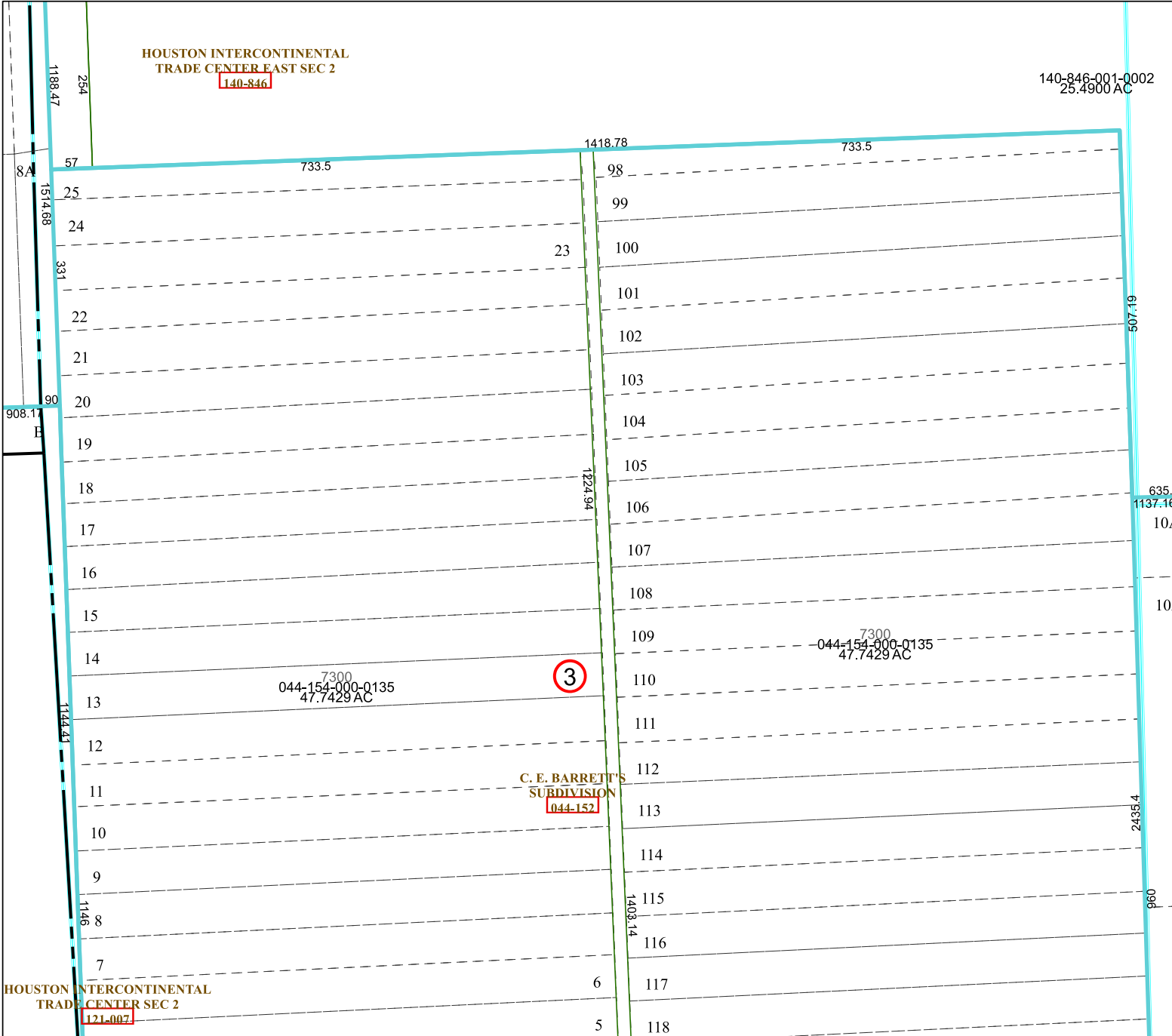
MAP LOCATION



FACET 5567D2

12	9	10	11	12
4	1	2	3	4
8	5	6	7	8

5567D1



5567D6

5567D3