

5568D4

Harris Central Appraisal District



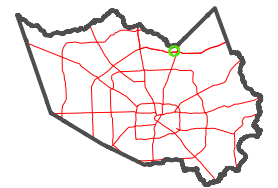
0 45 90 180 Feet

PUBLICATION DATE: 2/28/2024

Geospatial or map data maintained by the Harris Central Appraisal District is for informational purposes and may not have been prepared for or be suitable for legal, engineering, or surveying purposes. It does not represent an on-the-ground survey and only represents the approximate location of property boundaries.



MAP LOCATION



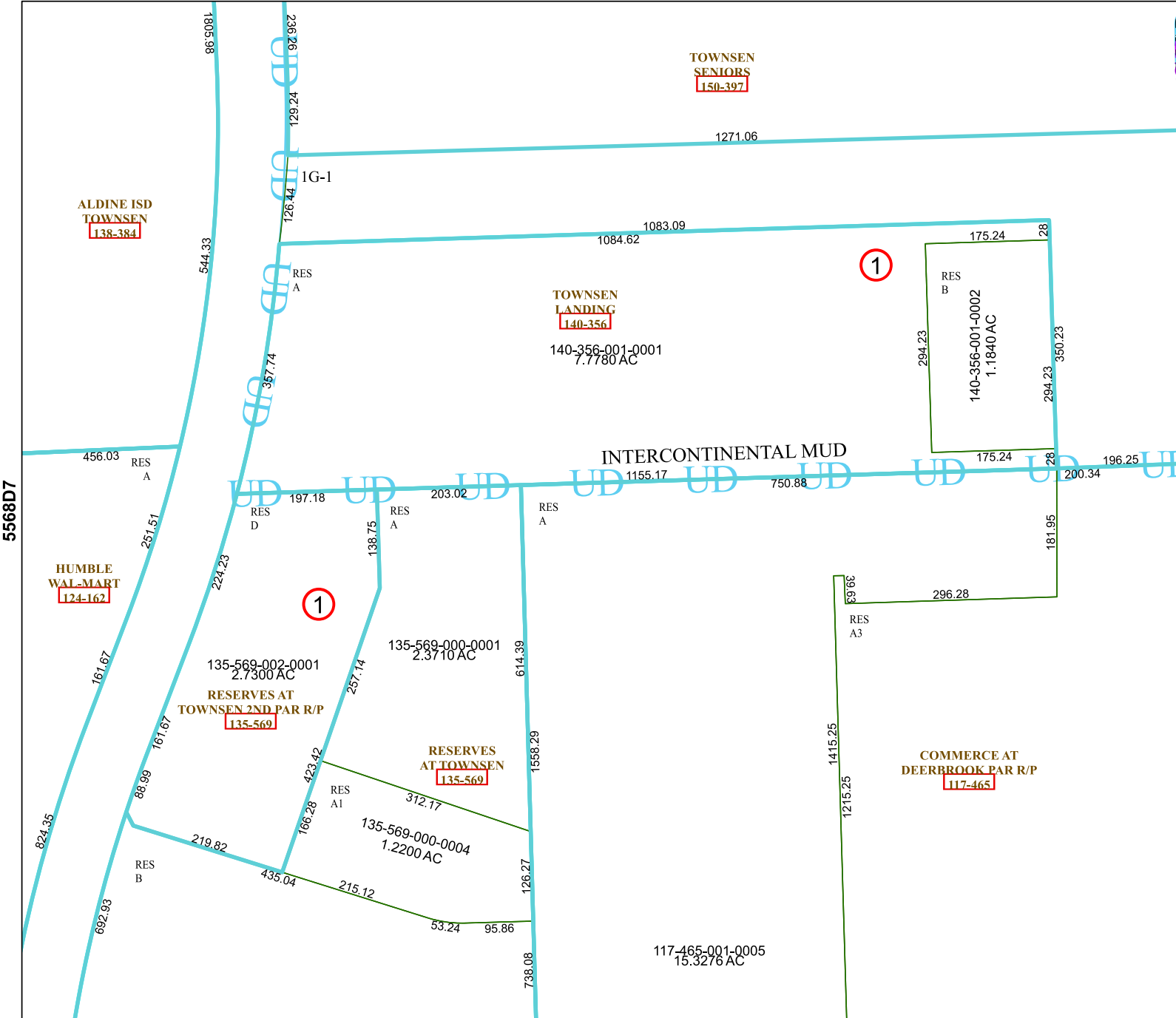
FACET 5568D8

2	3	4	1	2
6	7	8	5	6
10	11	12	9	10

5568D12

5568D7

5568C5



ALDINE ISD TOWNSEN 138-384

HUMBLE WAL-MART 124-162