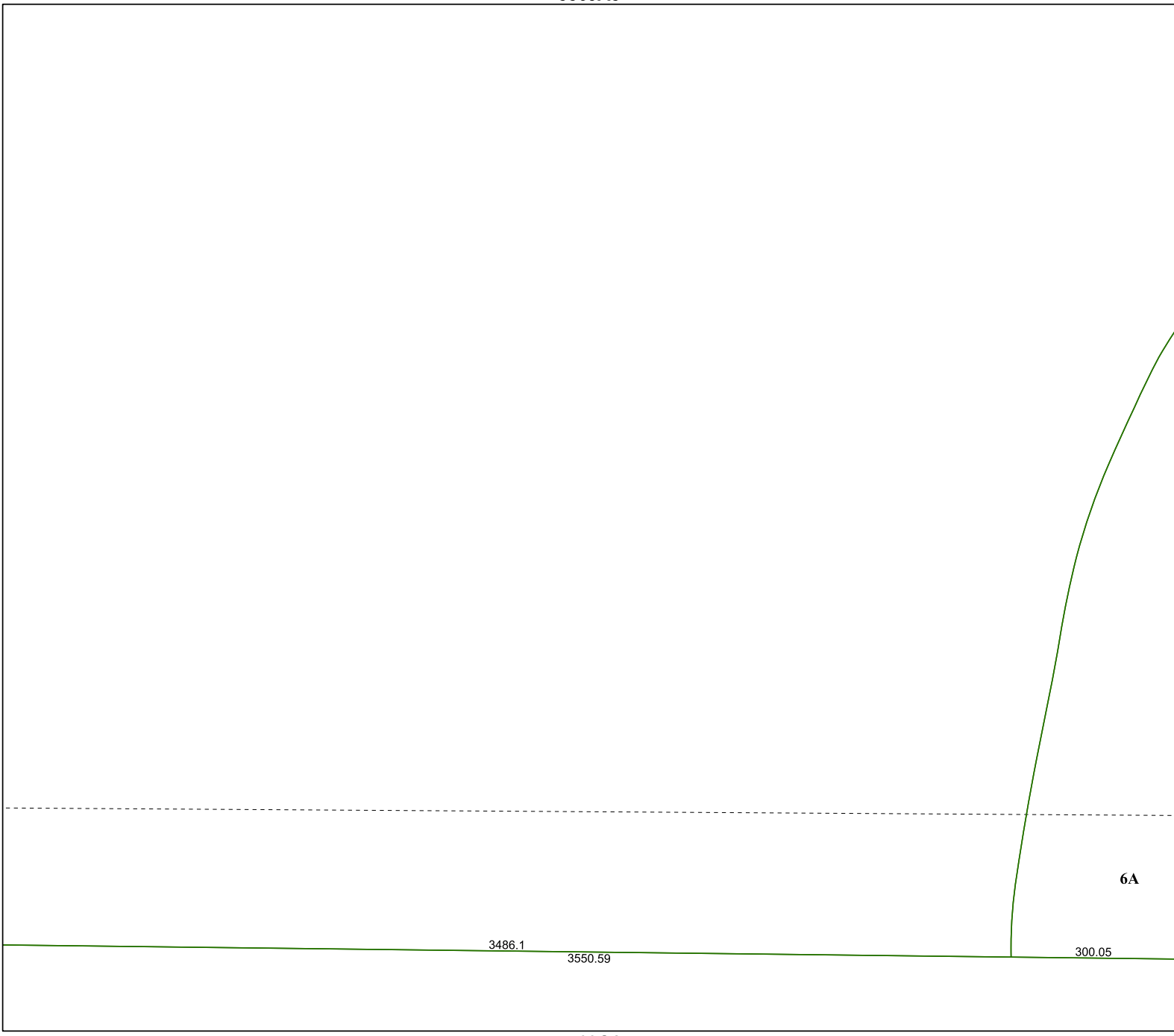


5569A5

5469B12



5569C1

# Harris Central Appraisal District



0 45 90 180 Feet

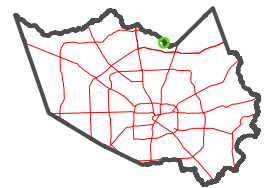
PUBLICATION DATE:  
12/30/2023

Geospatial or map data maintained by the Harris Central Appraisal District is for informational purposes and may **not** have been prepared for or be suitable for legal, engineering, or surveying purposes. It does **not** represent an on-the-ground survey and only represents the approximate location of property boundaries.



5569A10

## MAP LOCATION



## FACET 5569A9

|    |    |   |    |    |
|----|----|---|----|----|
| 7  | 8  | 5 | 6  | 7  |
| 11 | 12 | 9 | 10 | 11 |
| 3  | 4  | 1 | 2  | 3  |