

5652D12

SOUTH HOUSTON GARDENS SEC 8  
034-207

PRIVATE ROAD 5C-6

5C-5

5C-7

AY DRIVE  
21  
22  
23  
24

# Harris Central Appraisal District

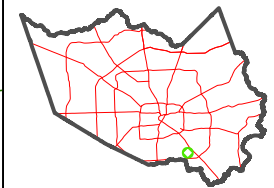


0 45 90 180 Feet

PUBLICATION DATE: 4/8/2024

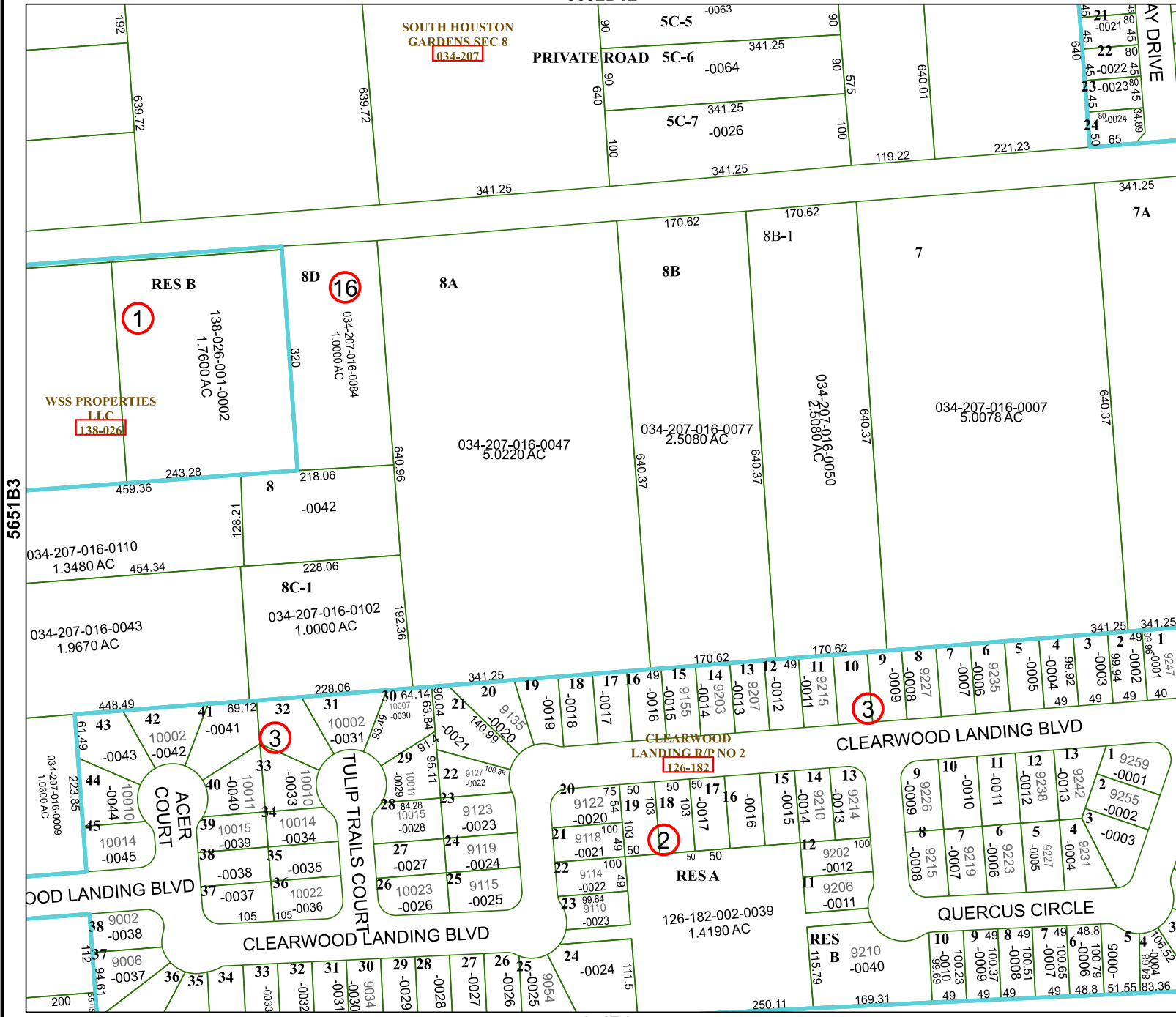
Geospatial or map data maintained by the Harris Central Appraisal District is for informational purposes and may not have been prepared for or be suitable for legal, engineering, or surveying purposes. It does not represent an on-the-ground survey and only represents the approximate location of property boundaries.

MAP LOCATION



## FACET 5651B4

10	11	12	9	10
2	3	4	1	2
6	7	8	5	6



5651B3

571512

5651B8