

# Harris Central Appraisal District

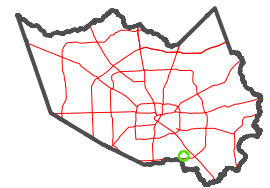


0 45 90 180 Feet

PUBLICATION DATE: 2/13/2023

Geospatial or map data maintained by the Harris Central Appraisal District is for informational purposes and may not be suitable for legal, engineering, or surveying purposes. It does not represent an on-the-ground survey and only represents the approximate location of property boundaries.

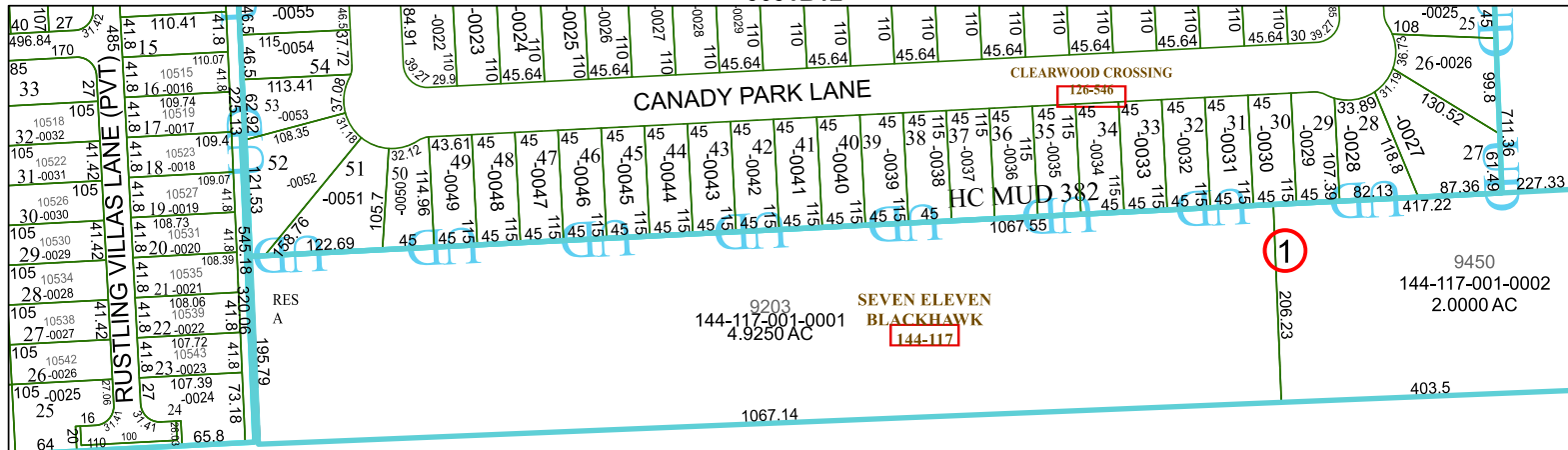
MAP LOCATION



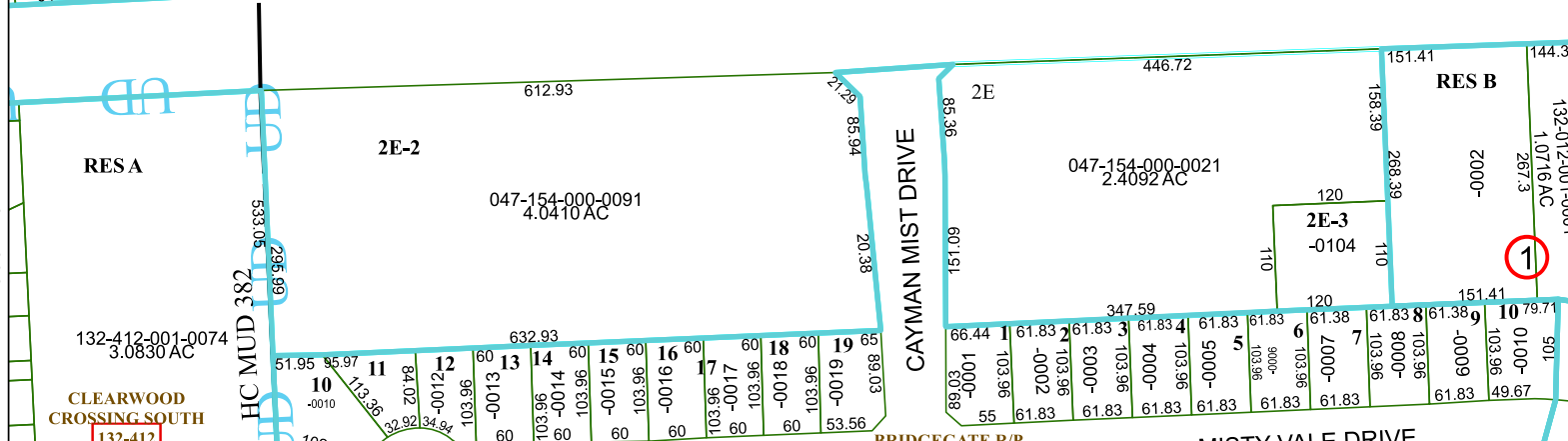
## FACET 5651D4

10	11	12	9	10
2	3	4	1	2
6	7	8	5	6

5651B12



5651D3



5651D8

