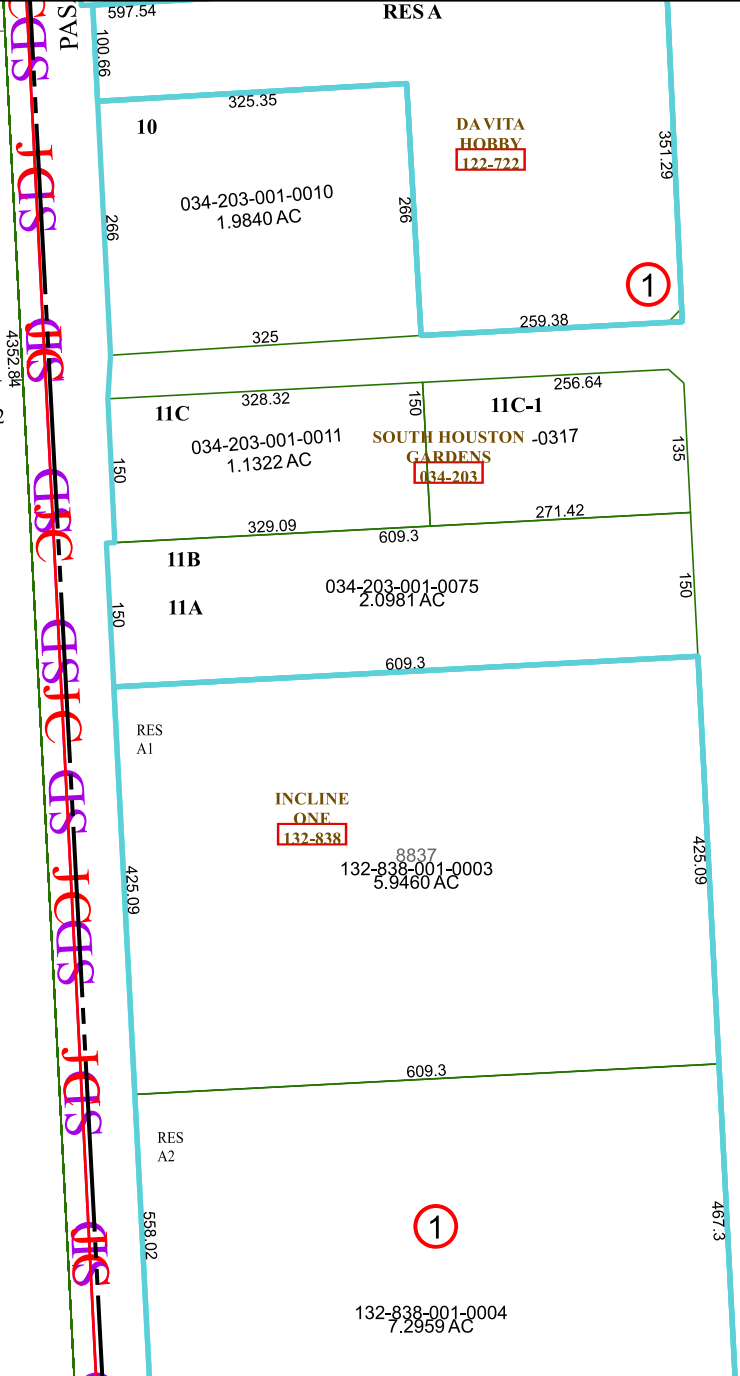


5652B1

HOH
4

4352.84
2

5652B9



Harris County Appraisal District



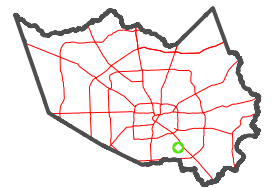
0 45 90 180 Feet

PUBLICATION DATE:
3/16/2022

Geospatial or map data maintained by the Harris County Appraisal District is for informational purposes and may not have been prepared for or be suitable for legal, engineering, or surveying purposes. It does not represent an on-the-ground survey and only represents the approximate location of property boundaries.



MAP LOCATION



FACET 5652B5

3	4	1	2	3
7	8	5	6	7
11	12	9	10	11

5652A8