

Harris Central Appraisal District

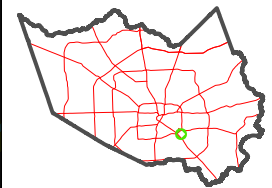


0 45 90 180 Feet

PUBLICATION DATE:
1/9/2023

Geospatial or map data maintained by the Harris Central Appraisal District is for informational purposes and may not have been prepared for or be suitable for legal, engineering, or surveying purposes. It does not represent an on-the-ground survey and only represents the approximate location of property boundaries.

MAP LOCATION



FACET 5654A4

10	11	12	9	10
2	3	4	1	2
6	7	8	5	6

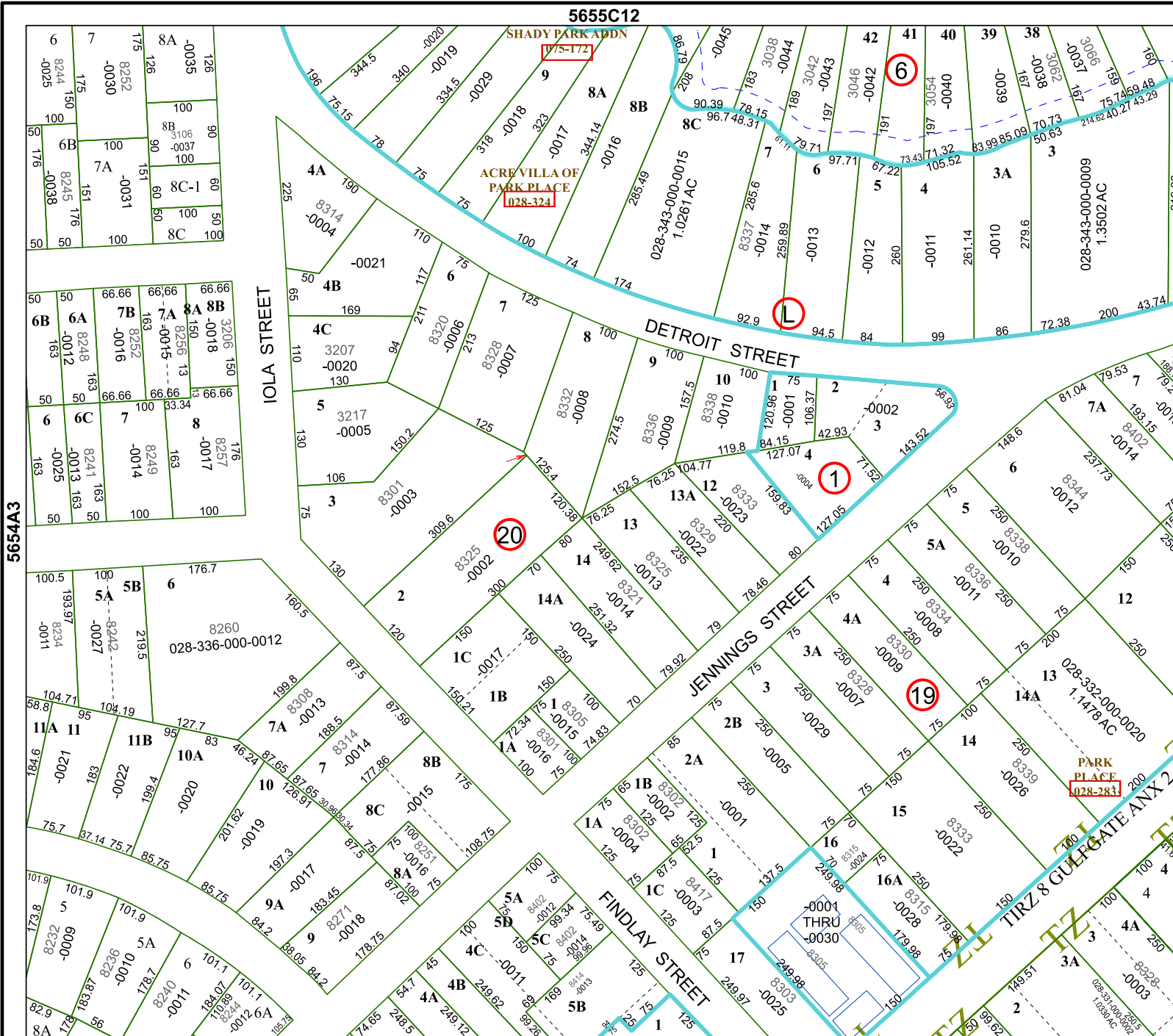
5655C12

SHADY PARK ADDN

075-172

ACREVILLA OF
PARK PLACE
028-324

5654A8



5654A3

5654B1

