

# Harris Central Appraisal District

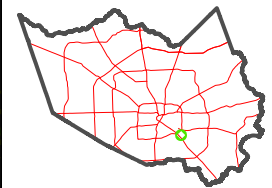


0 45 90 180 Feet

PUBLICATION DATE: 1/9/2023

Geospatial or map data maintained by the Harris Central Appraisal District is for informational purposes and may not have been prepared for or be suitable for legal, engineering, or surveying purposes. It does not represent an on-the-ground survey and only represents the approximate location of property boundaries.

MAP LOCATION

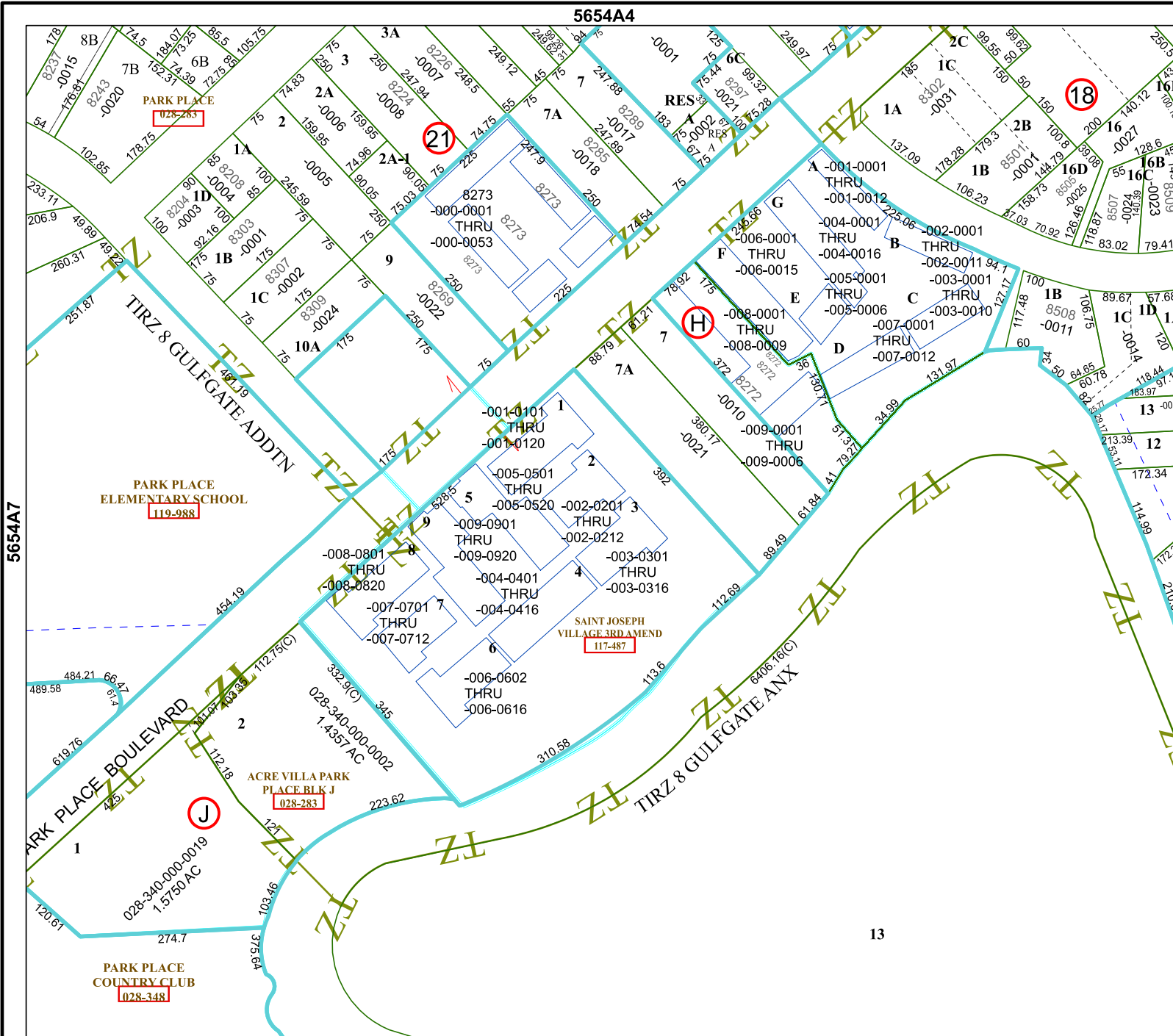


## FACET 5654A8

2	3	4	1	2
6	7	8	5	6
10	11	12	9	10

5654A4

5654A12



5654A7

5654B5

13

PARK PLACE  
028-283

PARK PLACE  
ELEMENTARY SCHOOL  
119-988

PARK PLACE  
COUNTRY CLUB  
028-348

ACRE VILLA PARK  
PLACE BLK J  
028-283

SAINT JOSEPH  
VILLAGE 3RD AMEND  
117-487

18

21

H

J