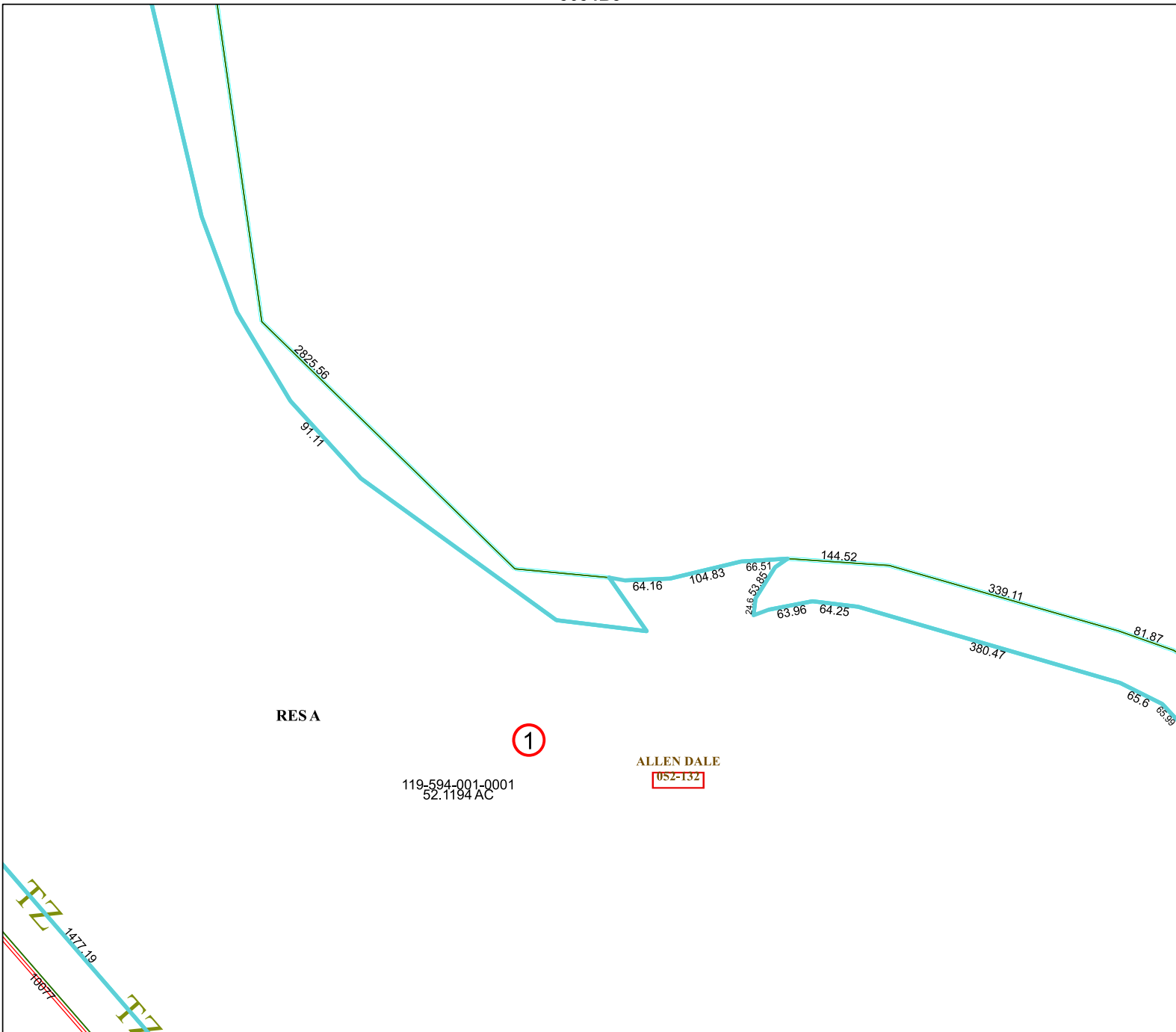


5654B3

5654B6



5654B11

Harris Central Appraisal District



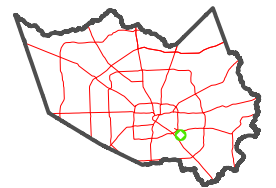
0 45 90 180
Feet

PUBLICATION DATE:
1/9/2023

Geospatial or map data maintained by the Harris Central Appraisal District is for informational purposes and may **not** have been prepared for or be suitable for legal, engineering, or surveying purposes. It does **not** represent an on-the-ground survey and only represents the approximate location of property boundaries.



MAP LOCATION



FACET

5654B7

1	2	3	4	1
5	6	7	8	5
9	10	11	12	9