

Harris Central Appraisal District

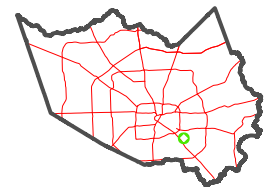


0 45 90 180 Feet

PUBLICATION DATE: 1/9/2023

Geospatial or map data maintained by the Harris Central Appraisal District is for informational purposes and may not have been prepared for or be suitable for legal, engineering, or surveying purposes. It does not represent an on-the-ground survey and only represents the approximate location of property boundaries.

MAP LOCATION

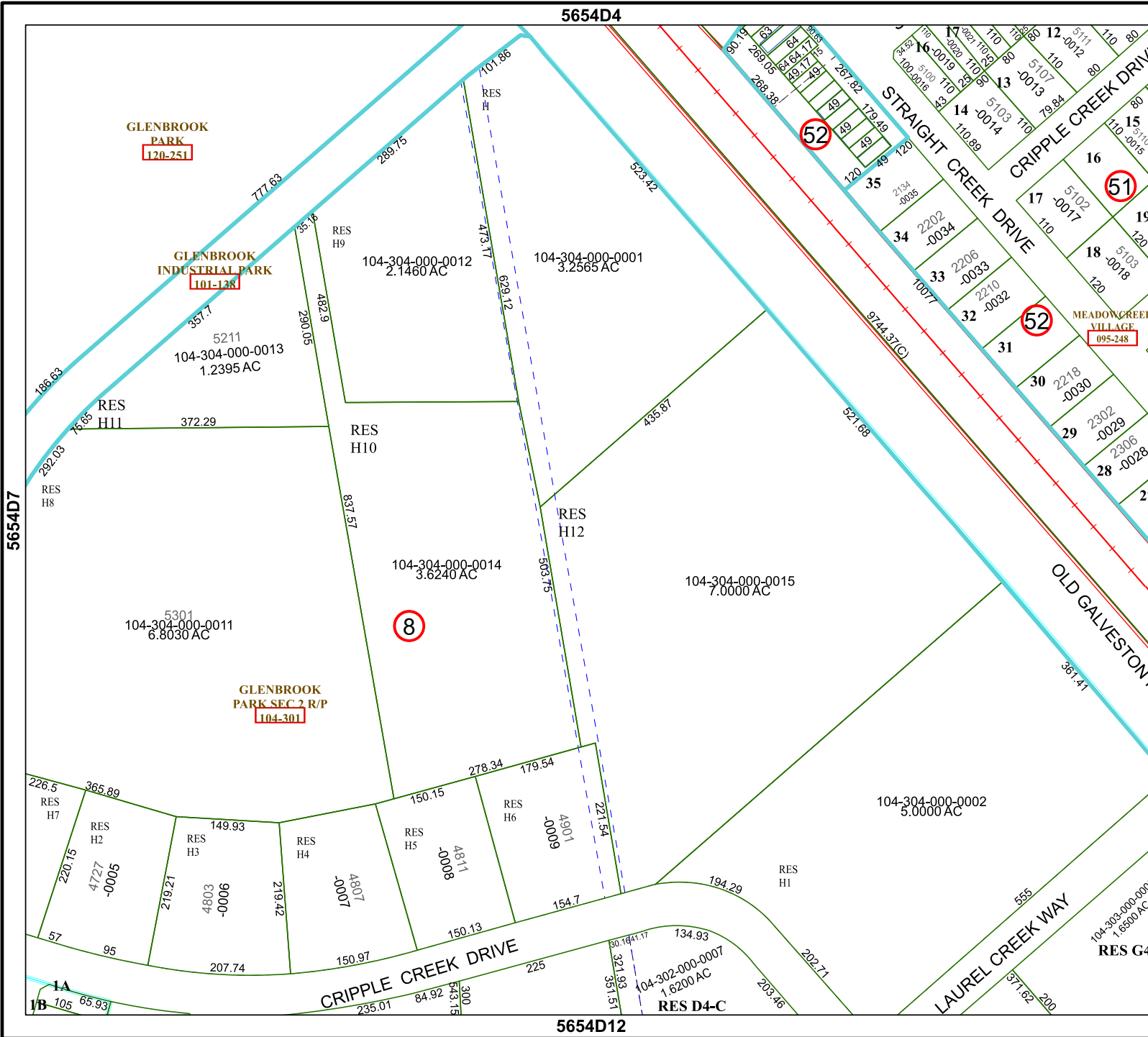


FACET 5654D8

| | | | | |
|----|----|----|----|----|
| 2 | 3 | 4 | 5 | 6 |
| 6 | 7 | 8 | 9 | 10 |
| 10 | 11 | 12 | 13 | 14 |

5654D4

5654D12



5754C5

5654D7

RES G4
104-302-000-0008
1.6500 AC

LA 105
IB 105
65.93

RES D4-C
104-302-000-0007
1.6200 AC