

Harris Central Appraisal District

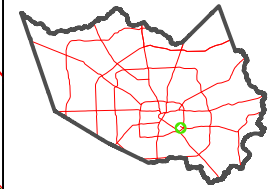


0 45 90 180 Feet

PUBLICATION DATE: 4/22/2024

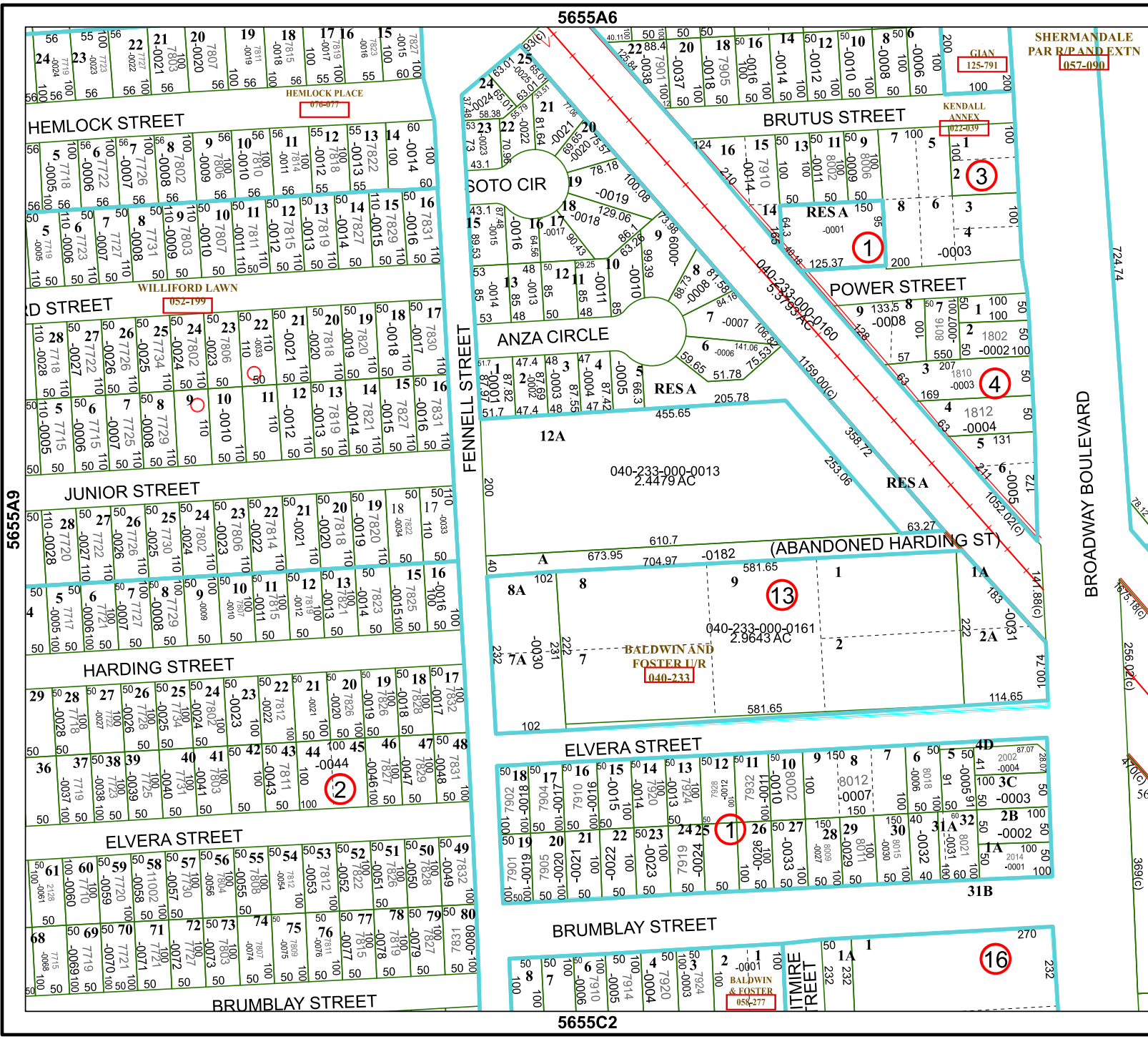
Geospatial or map data maintained by the Harris Central Appraisal District is for informational purposes and may not have been prepared for or be suitable for legal, engineering, or surveying purposes. It does not represent an on-the-ground survey and only represents the approximate location of property boundaries.

MAP LOCATION



FACET 5655A10

8	5	6	7	8
12	9	10	11	12
4	1	2	3	4



5655A9

5655A6

SHERMANDALE
PARR/PANDEXTN
125-791
057-090

BROADWAY BOULEVARD

5655A11

5655C2

BALDWIN
& FOSTER
058-277