

Harris Central Appraisal District

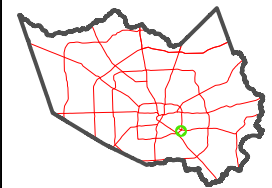


0 45 90 180 Feet

PUBLICATION DATE: 1/9/2023

Geospatial or map data maintained by the Harris Central Appraisal District is for informational purposes and may not have been prepared for or be suitable for legal, engineering, or surveying purposes. It does not represent an on-the-ground survey and only represents the approximate location of property boundaries.

MAP LOCATION

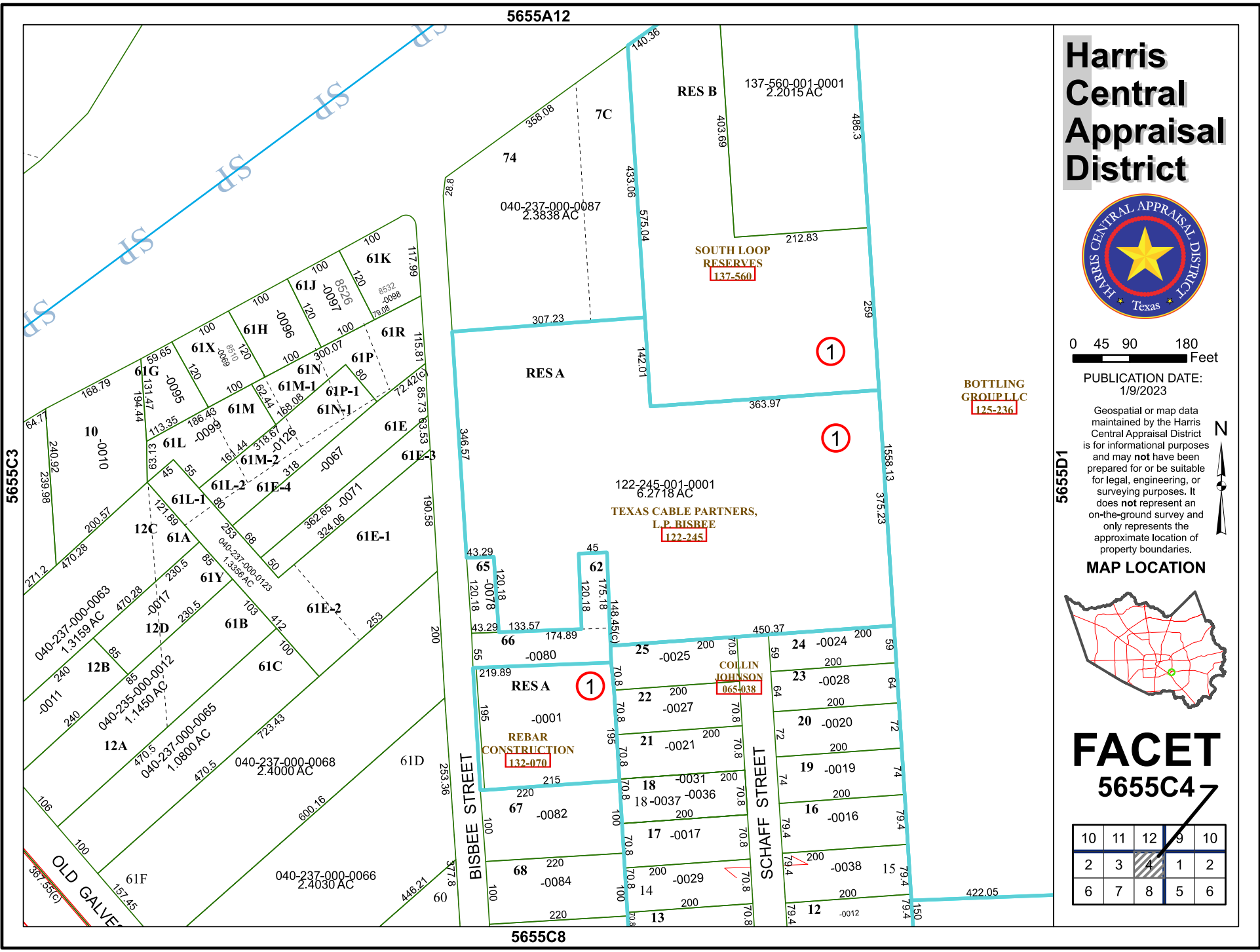


FACET 5655C4

10	11	12	13	14
2	3	4	5	6
6	7	8	9	10

5655A12

5655C8



BOTTLING GROUP LLC
125-236

SOUTH LOOP RESERVES
137-560

TEXAS CABLE PARTNERS, L.P. BISBEE
122-245

COLLIN JOHNSON
065-038

REBAR CONSTRUCTION
132-070

1

1

1

