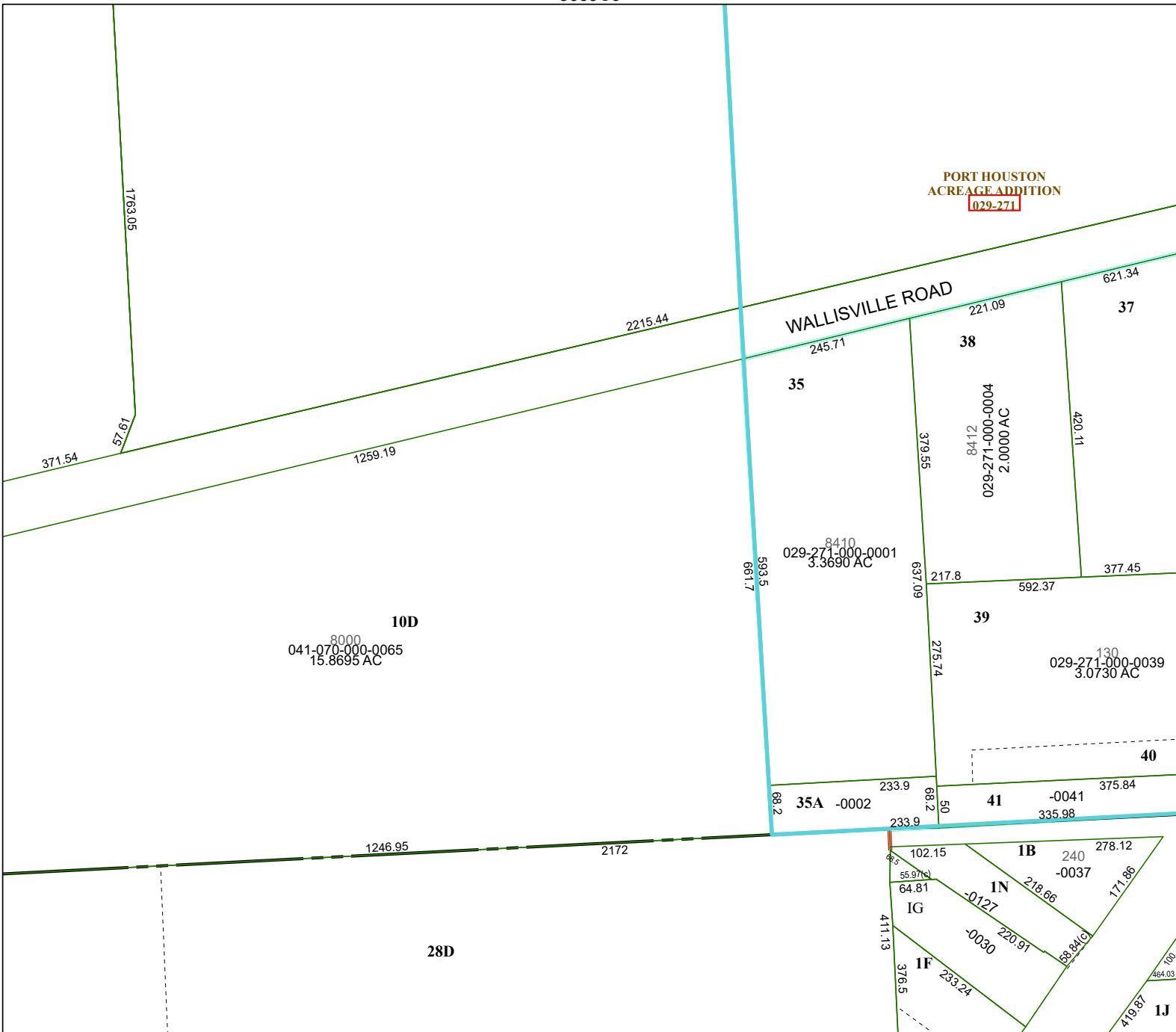


5659C9

5558B4



# Harris Central Appraisal District



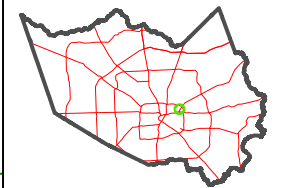
0 50 100 200 Feet

PUBLICATION DATE:  
12/16/2025

Geospatial or map data maintained by the Harris Central Appraisal District is for informational purposes and may **not** have been prepared for or be suitable for legal, engineering, or surveying purposes. It does **not** represent an on-the-ground survey and only represents the approximate location of property boundaries.



### MAP LOCATION



## FACET 5658A1

11	12	9	10	11
3	4	1	2	3
7	8	5	6	7

5658A5

5658A2