

Harris Central Appraisal District



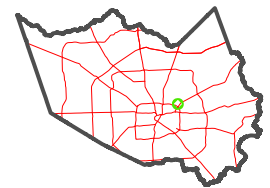
0 45 90 180 Feet

PUBLICATION DATE:
3/25/2024

Geospatial or map data maintained by the Harris Central Appraisal District is for informational purposes and may not have been prepared for or be suitable for legal, engineering, or surveying purposes. It does not represent an on-the-ground survey and only represents the approximate location of property boundaries.



MAP LOCATION

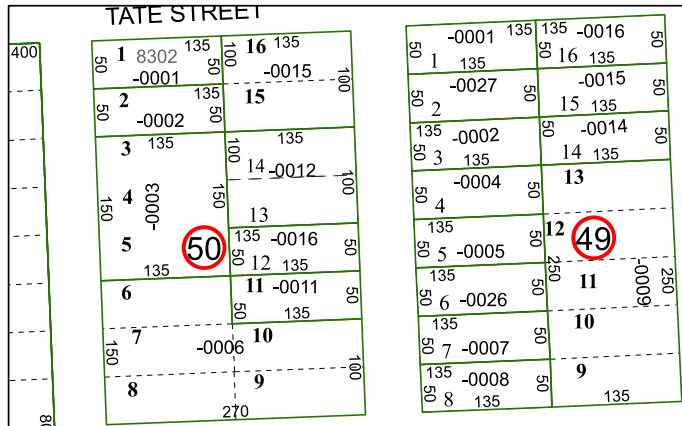


FACET 5659A7

1	2	3	4	1
5	6	7	8	5
9	10	11	12	9

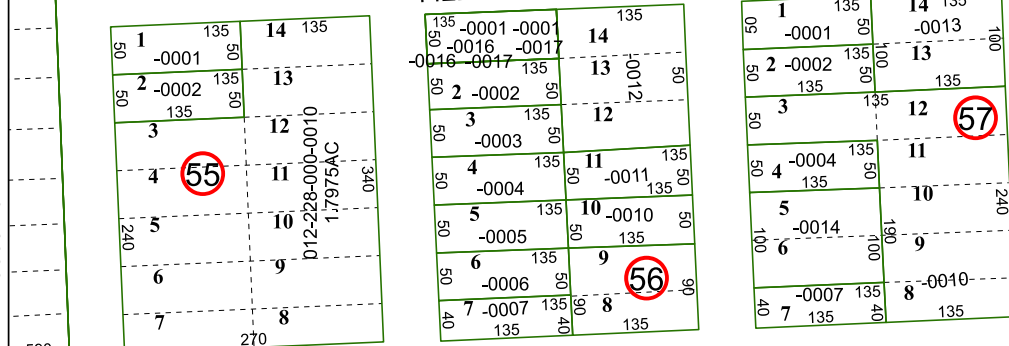
5659A3

TATE STREET



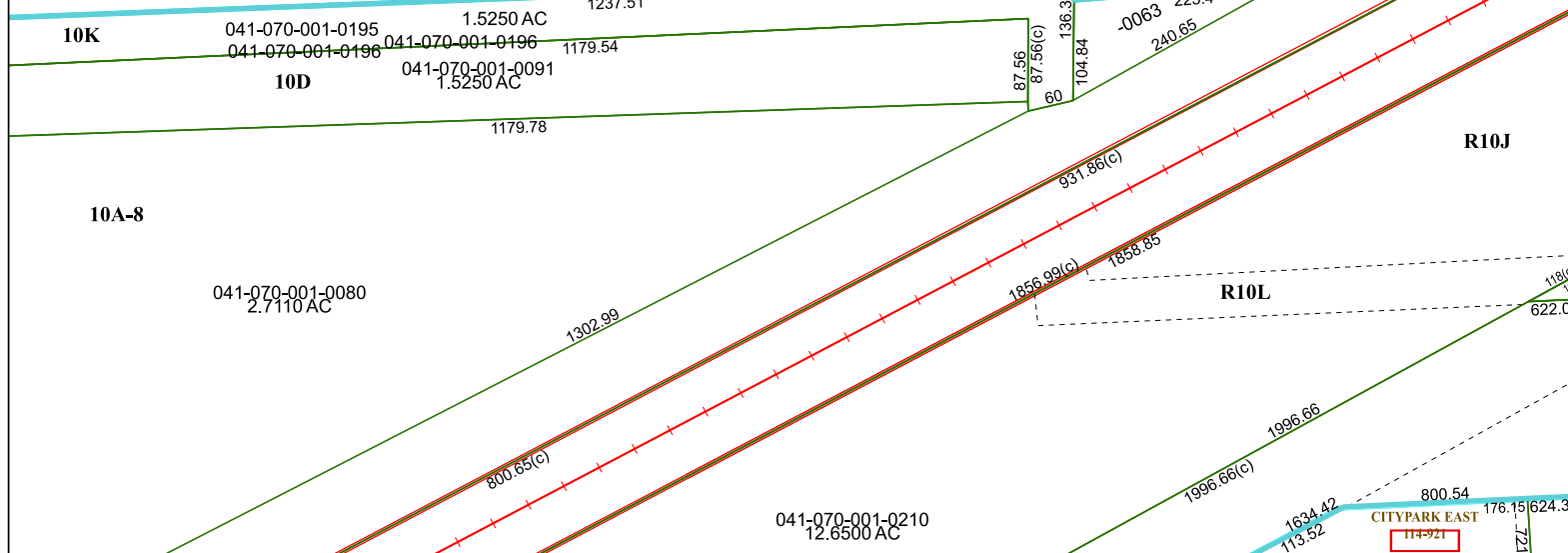
5659A3

FIELDS STREET



5659A3

EAST HOUSTON



5659A11

5659A6

5659A8

CITYPARK EAST