

5660D10

220
229.97

Harris Central Appraisal District



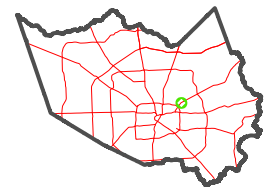
0 45 90 180
Feet

PUBLICATION DATE:
6/22/2023

Geospatial or map data maintained by the Harris Central Appraisal District is for informational purposes and may not have been prepared for or be suitable for legal, engineering, or surveying purposes. It does not represent an on-the-ground survey and only represents the approximate location of property boundaries.



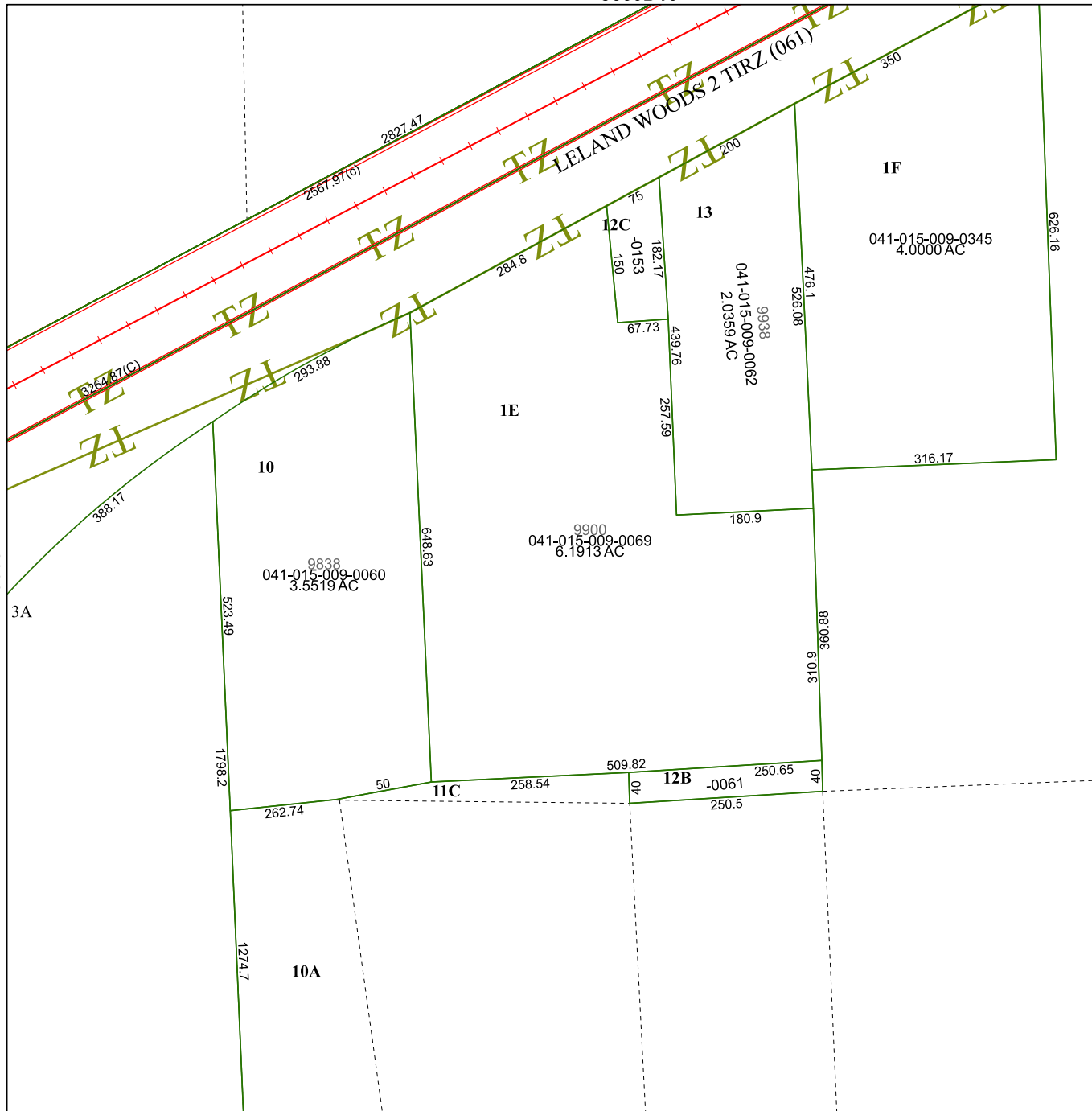
MAP LOCATION



FACET 5659B2

12	9	10	11	12
4	1	2	3	4
8	5	6	7	8

5659B6



5659B1

5659B3

1D