

5659B10

CULEBRA STREET

SALTILLO STREET

COAHUILA STREET

RAFAEL STREET

5659D6

PEDRO AVENUE

Harris Central Appraisal District

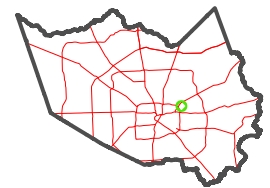


0 45 90 180 Feet

PUBLICATION DATE: 6/5/2023

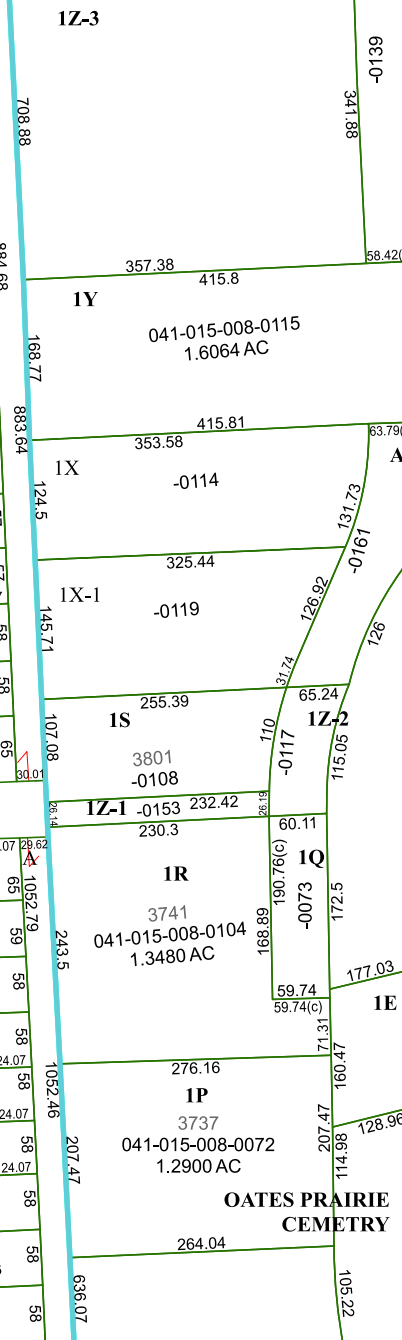
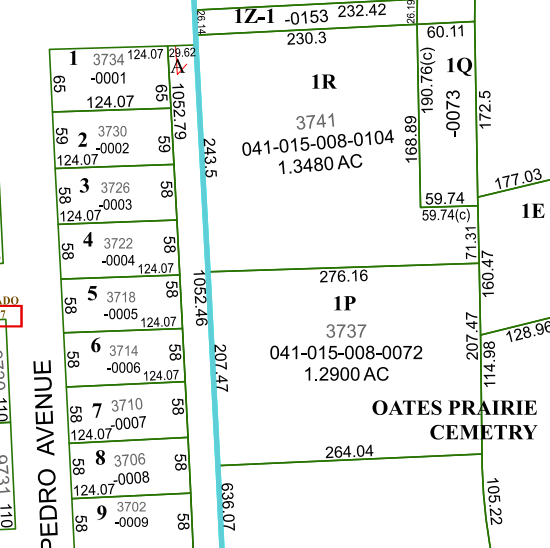
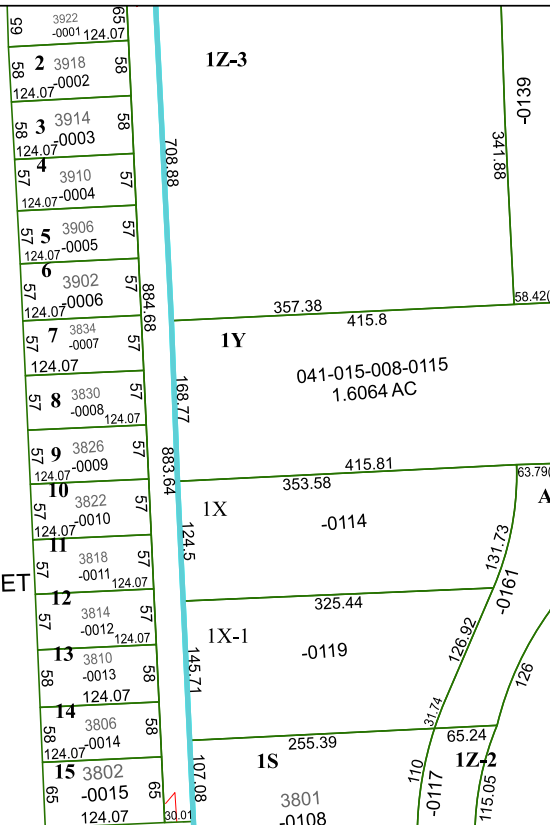
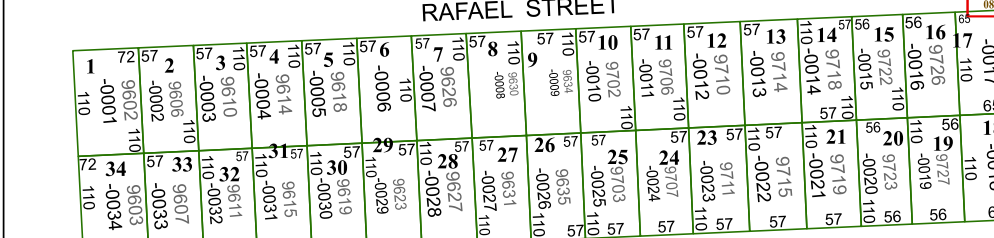
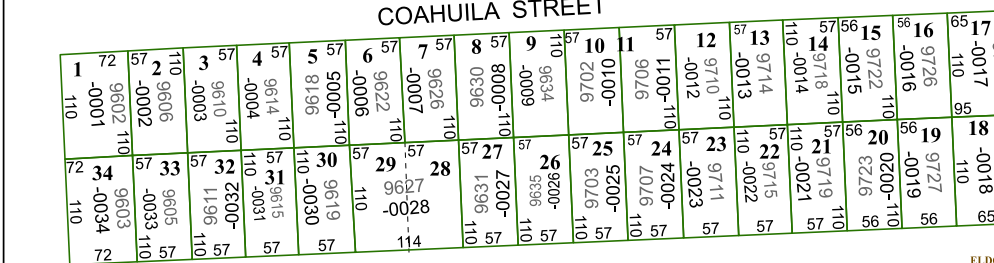
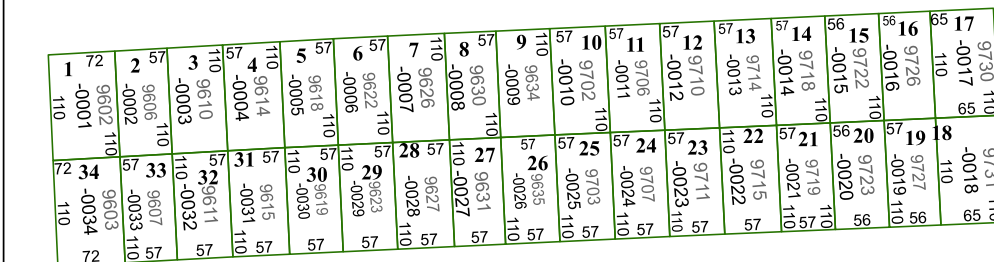
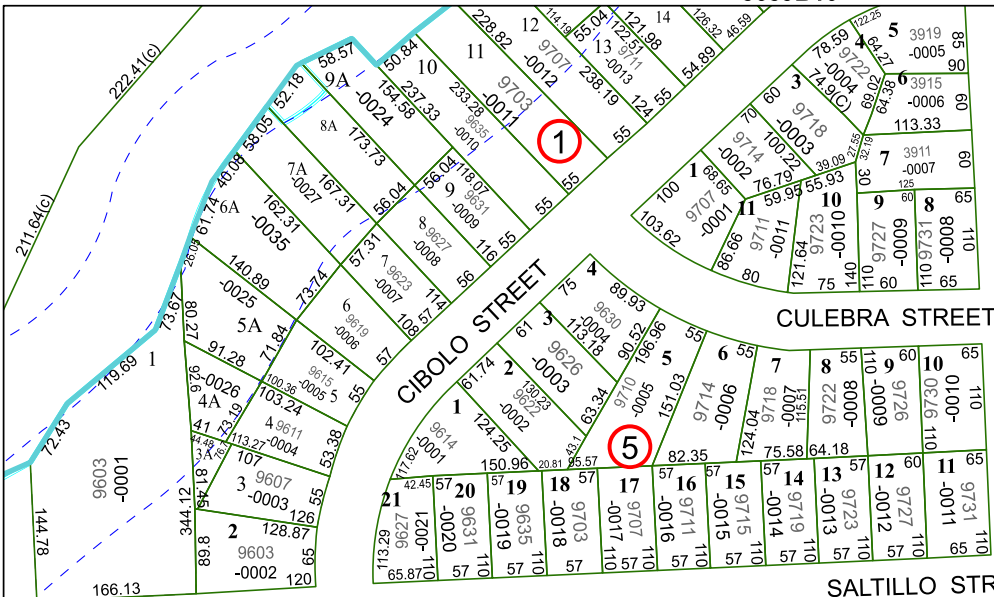
Geospatial or map data maintained by the Harris Central Appraisal District is for informational purposes and may not have been prepared for or be suitable for legal, engineering, or surveying purposes. It does not represent an on-the-ground survey and only represents the approximate location of property boundaries.

MAP LOCATION



FACET 5659D2

| | | | | |
|----|---|----|----|----|
| 12 | 9 | 10 | 11 | 12 |
| 4 | 1 | 2 | 3 | 4 |
| 8 | 5 | 6 | 7 | 8 |



5659D1

5659D3

