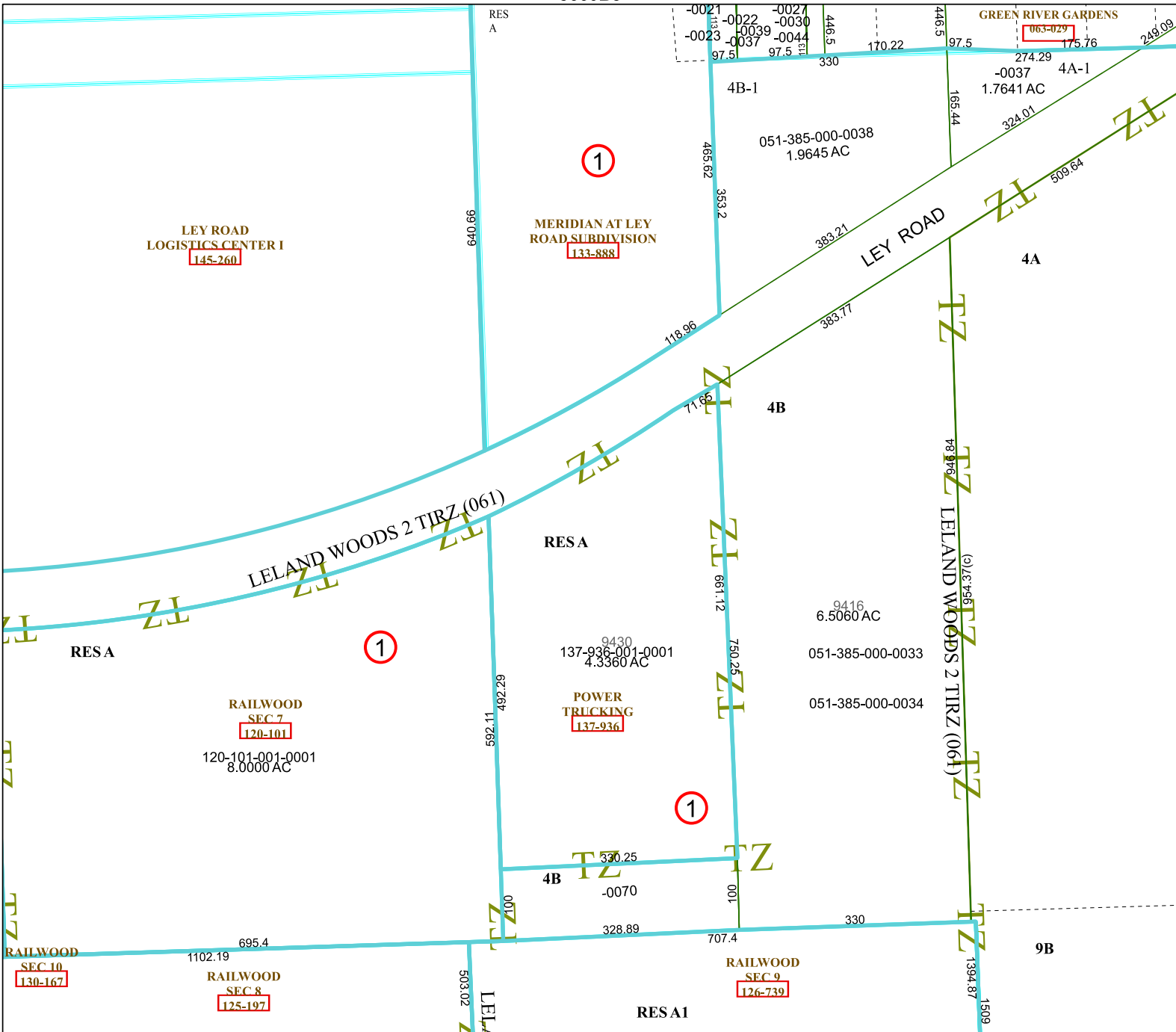


5660B3

5660B6

5660B11



# Harris Central Appraisal District

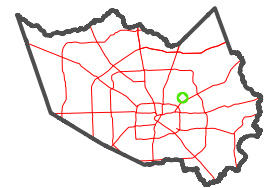


0 45 90 180 Feet

PUBLICATION DATE: 1/13/2025

Geospatial or map data maintained by the Harris Central Appraisal District is for informational purposes and may not have been prepared for or be suitable for legal, engineering, or surveying purposes. It does not represent an on-the-ground survey and only represents the approximate location of property boundaries.

MAP LOCATION



## FACET 5660B7

1	2	3	4	1
5	6	7	8	5
9	10	11	12	9