

# Harris Central Appraisal District

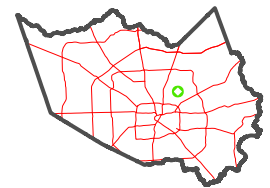


0 45 90 180 Feet

PUBLICATION DATE:  
12/30/2023

Geospatial or map data maintained by the Harris Central Appraisal District is for informational purposes and may not have been prepared for or be suitable for legal, engineering, or surveying purposes. It does not represent an on-the-ground survey and only represents the approximate location of property boundaries.

MAP LOCATION

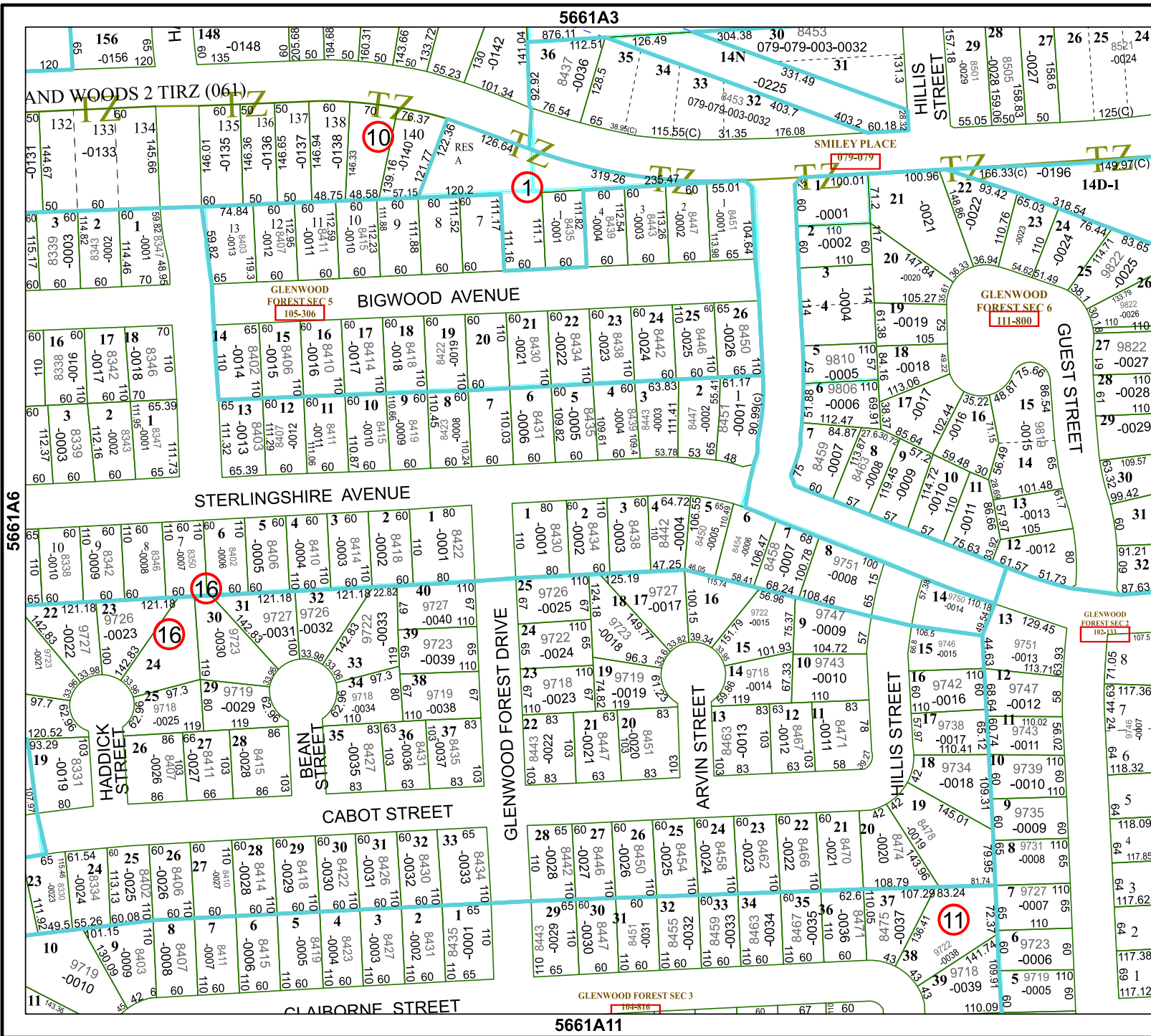


## FACET 5661A7

1	2	3	4	1
5	6	7	8	5
9	10	11	12	9

5661A3

5661A11



5661A6

5661A7

