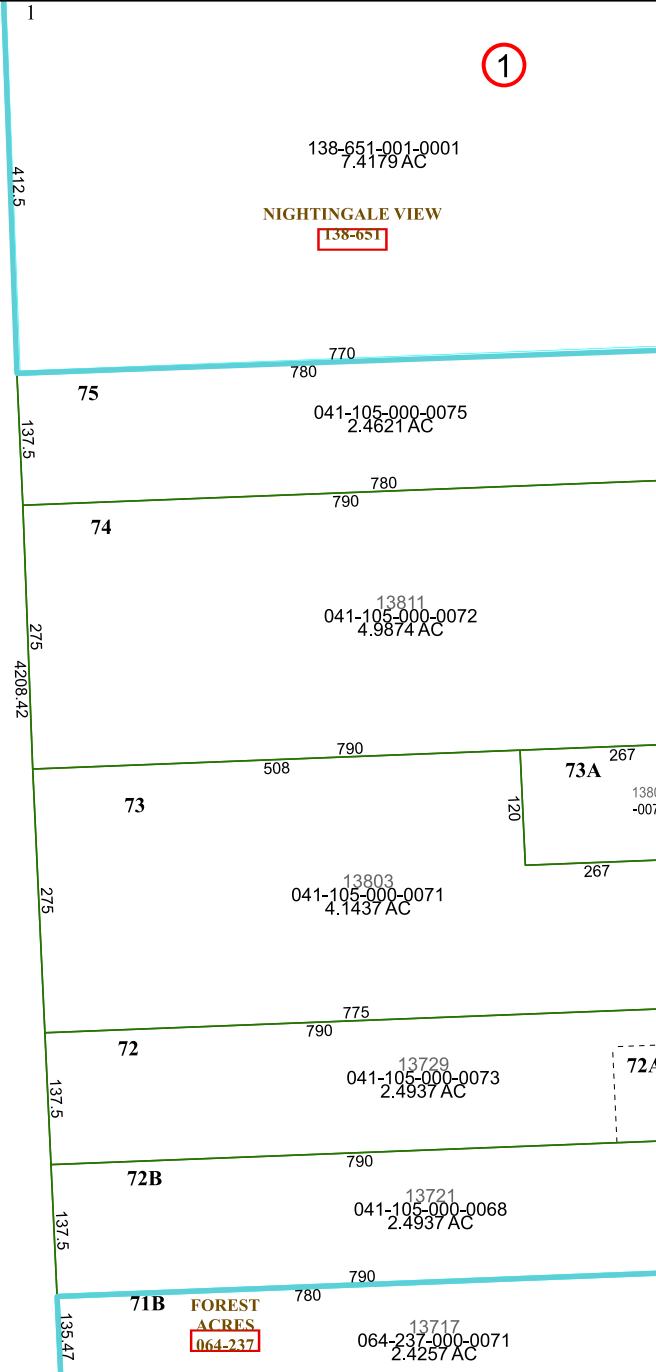


5664D10

5663B1

9407
041-105-000-0001
182.4550 AC



1

412.5
137.5
275
4208.42
275
137.5
137.5
135.47

Harris Central Appraisal District



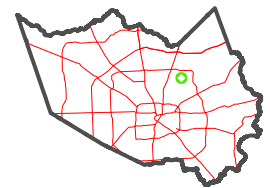
0 45 90 180 Feet

PUBLICATION DATE:
1/9/2023

Geospatial or map data maintained by the Harris Central Appraisal District is for informational purposes and may not have been prepared for or be suitable for legal, engineering, or surveying purposes. It does not represent an on-the-ground survey and only represents the approximate location of property boundaries.



MAP LOCATION



FACET 5663B2

12	9	10	11	12
4	1	2	3	4
8	5	6	7	8

5663B6