

5663D6

19

SAM HOUSTON ROAD

Harris Central Appraisal District

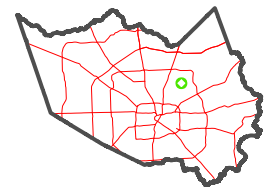


0 45 90 180 Feet

PUBLICATION DATE: 2/28/2024

Geospatial or map data maintained by the Harris Central Appraisal District is for informational purposes and may not have been prepared for or be suitable for legal, engineering, or surveying purposes. It does not represent an on-the-ground survey and only represents the approximate location of property boundaries.

MAP LOCATION



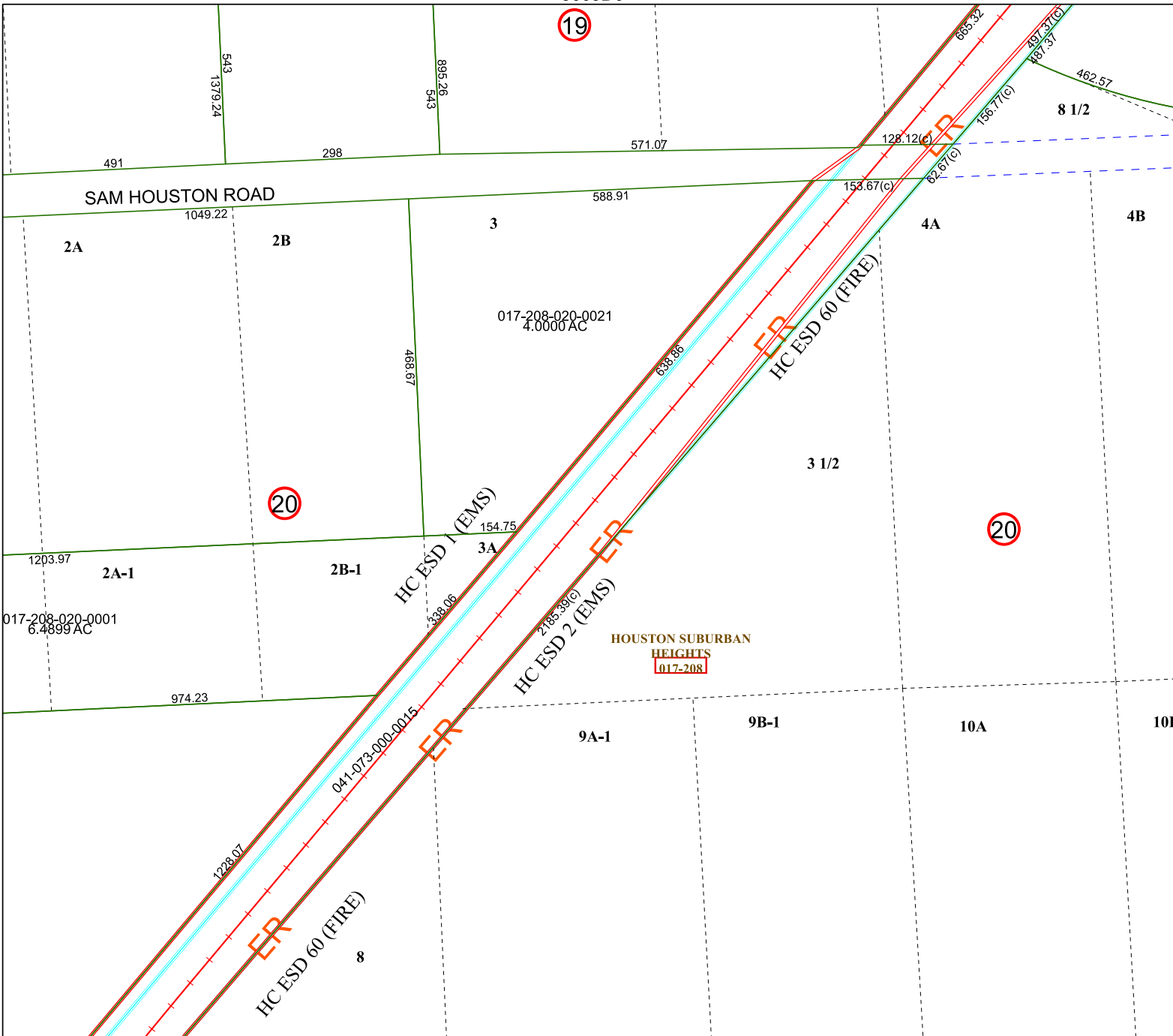
FACET 5663D10

8	5	6	7	8
12	9	10	11	12
4	1	2	3	4

5662B2

5663D9

5663D11



017-208-020-0001
6.4899 AC

017-208-020-0021
4.0000 AC

HOUSTON SUBURBAN
HEIGHTS
[017-208]