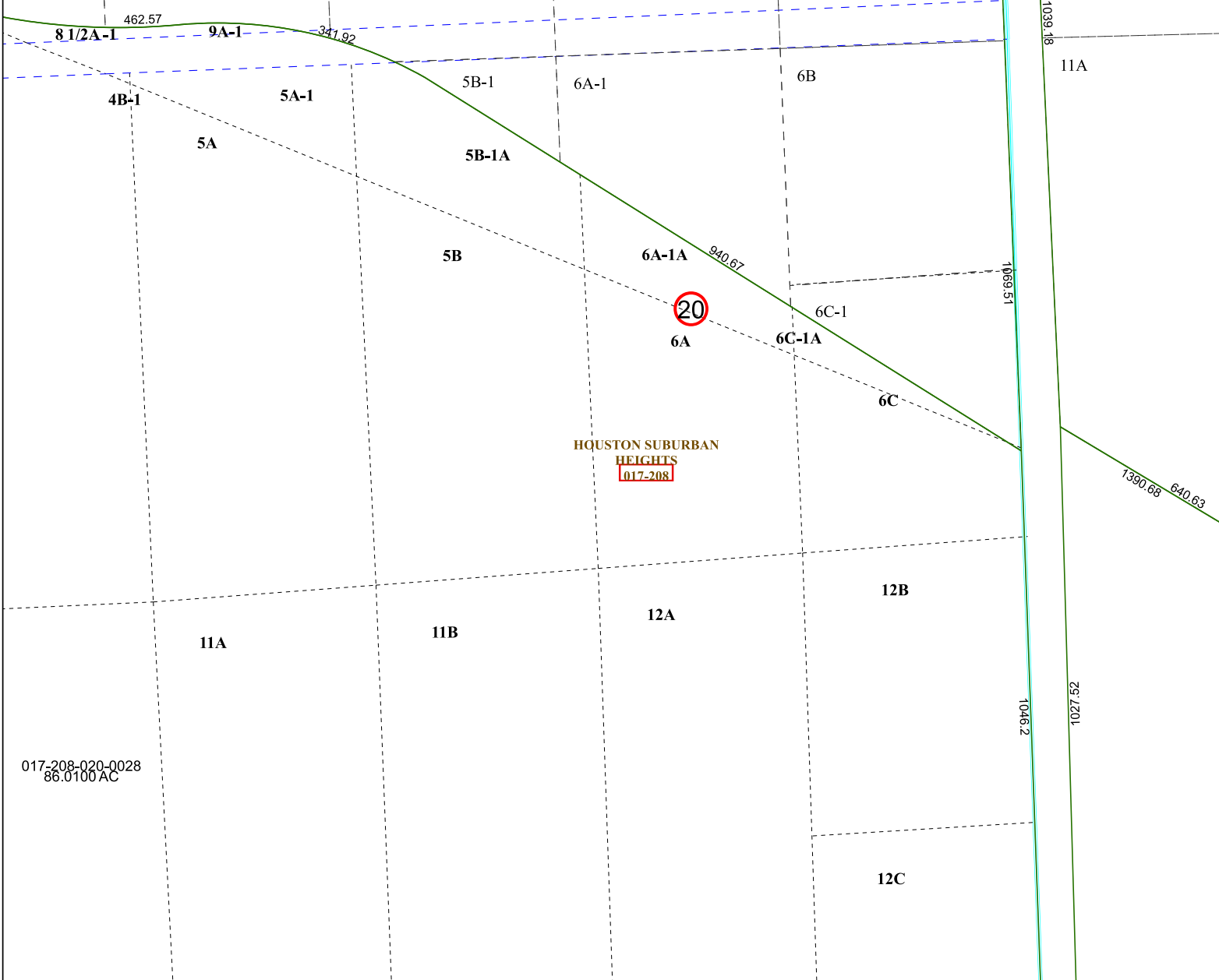


5663D7

19



HOUSTON SUBURBAN  
HEIGHTS  
[017-208]

017-208-020-0028  
86.0100 AC

5662B3

# Harris Central Appraisal District



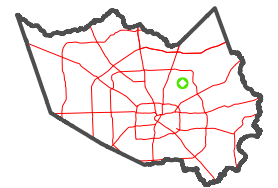
0 45 90 180  
Feet

PUBLICATION DATE:  
1/9/2023

Geospatial or map data maintained by the Harris Central Appraisal District is for informational purposes and may not have been prepared for or be suitable for legal, engineering, or surveying purposes. It does not represent an on-the-ground survey and only represents the approximate location of property boundaries.



### MAP LOCATION



## FACET 5663D11

5	6	7	8	5
9	10	11	12	9
1	2	3	4	1

5663D10

5663D12