

5663B12

Harris Central Appraisal District



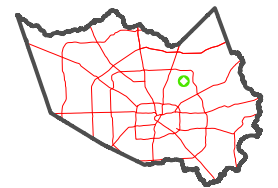
0 45 90 180 Feet

PUBLICATION DATE:
2/28/2024

Geospatial or map data maintained by the Harris Central Appraisal District is for informational purposes and may not have been prepared for or be suitable for legal, engineering, or surveying purposes. It does not represent an on-the-ground survey and only represents the approximate location of property boundaries.



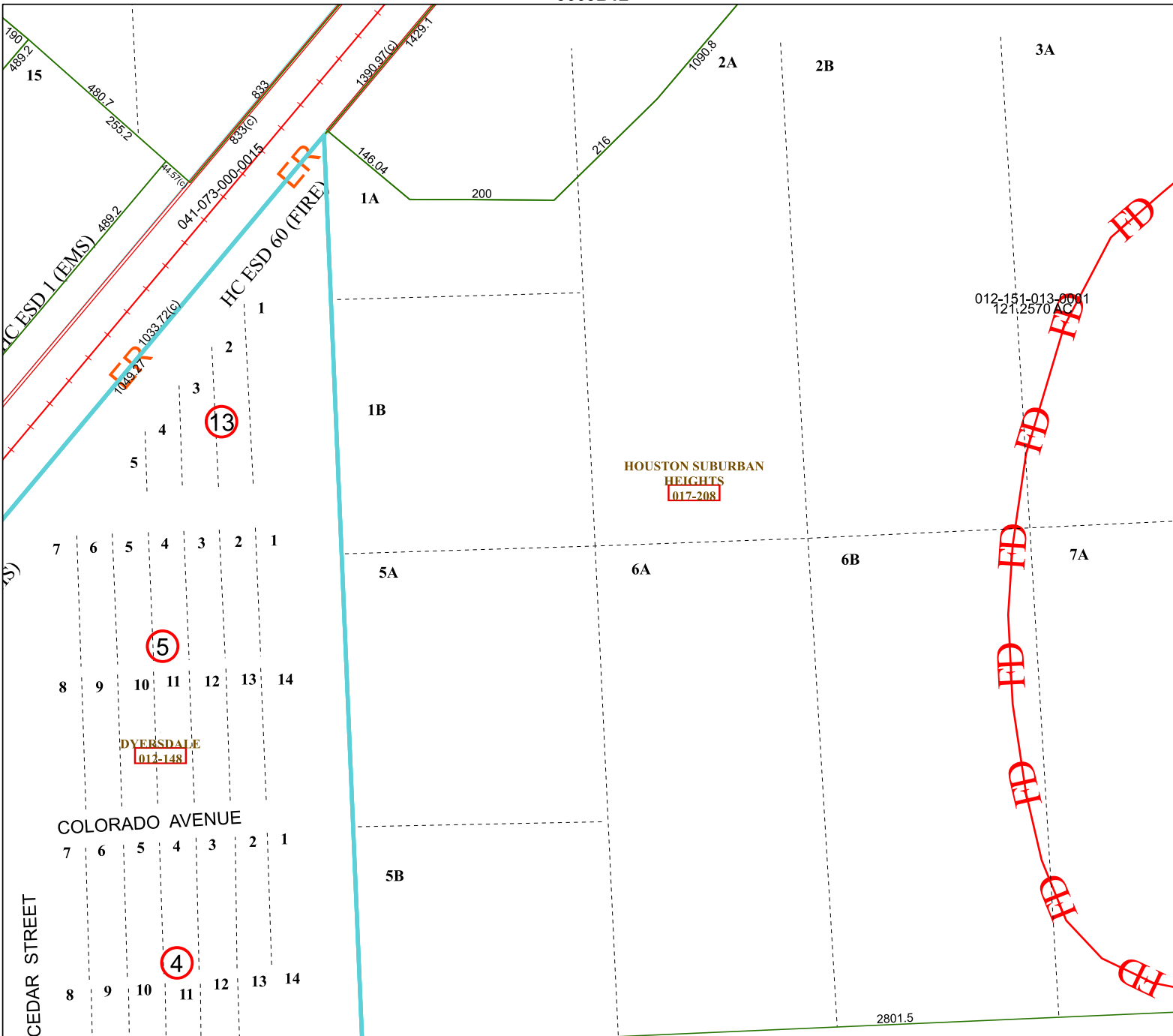
MAP LOCATION



FACET

5663D4

| | | | | |
|----|----|----|---|----|
| 10 | 11 | 12 | 9 | 10 |
| 2 | 3 | 4 | 1 | 2 |
| 6 | 7 | 8 | 5 | 6 |



5663D8

5663D3

5763C1

2801.5

13

5

4