

5664A8

123-890-002-0002
26.6400 AC

Harris Central Appraisal District

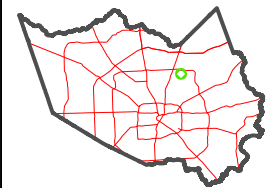


0 45 90 180
Feet

PUBLICATION DATE:
1/9/2023

Geospatial or map data maintained by the Harris Central Appraisal District is for informational purposes and may not have been prepared for or be suitable for legal, engineering, or surveying purposes. It does not represent an on-the-ground survey and only represents the approximate location of property boundaries.

MAP LOCATION

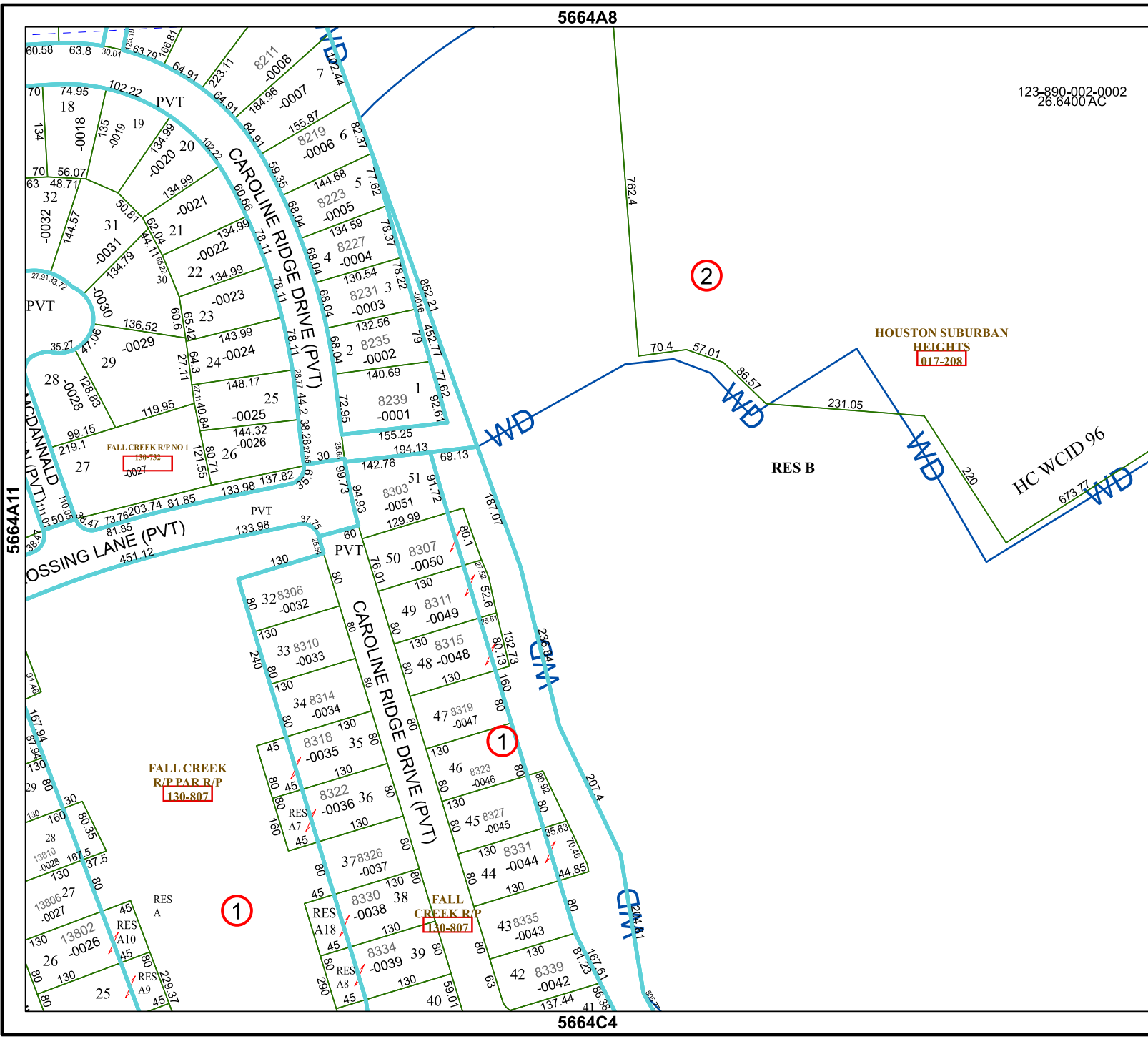


FACET

5664A12

6	7	8	5	6
10	11	12	9	10
2	3	4	1	2

5664C4



5664A11

5664B9