

# Harris Central Appraisal District

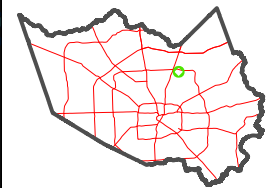


0 45 90 180 Feet

PUBLICATION DATE:  
1/9/2023

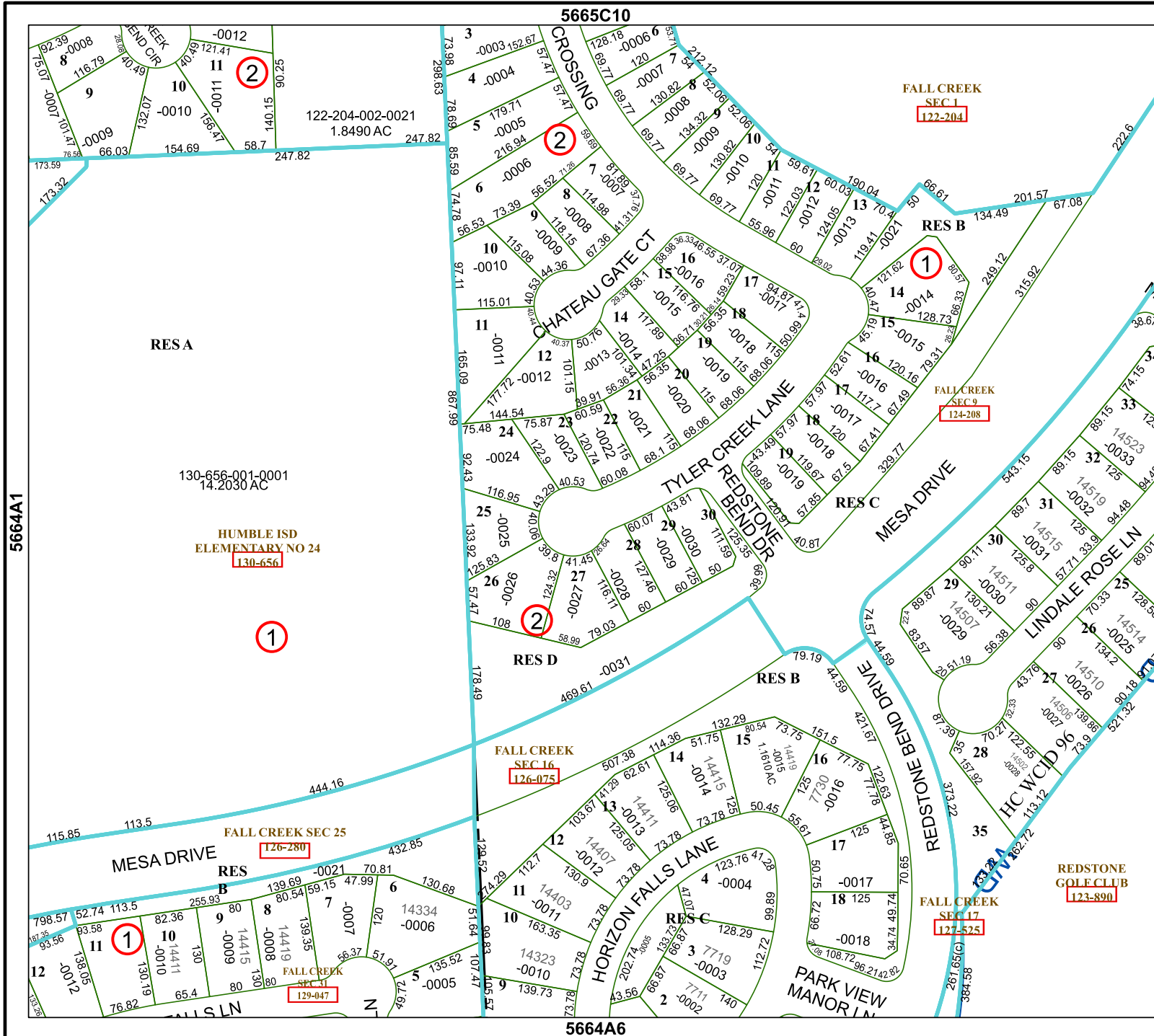
Geospatial or map data maintained by the Harris Central Appraisal District is for informational purposes and may not have been prepared for or be suitable for legal, engineering, or surveying purposes. It does not represent an on-the-ground survey and only represents the approximate location of property boundaries.

MAP LOCATION



## FACET 5664A2

12	9	10	11	12
4	1	2	3	4
8	5	6	7	8



5665C10

FALL CREEK  
SEC 1  
122-204

RES B  
1

FALL CREEK  
SEC 9  
124-208

RES A

130-656-001-0001  
14.2030 AC

HUMBLE ISD  
ELEMENTARY NO 24  
130-656

FALL CREEK  
SEC 16  
126-075

FALL CREEK SEC 25  
126-280

REDSTONE  
GOLF CLUB  
123-890

FALL CREEK  
SEC 17  
127-525

FALL CREEK  
SEC 31  
129-047

5664A6

5664A1

5664A3