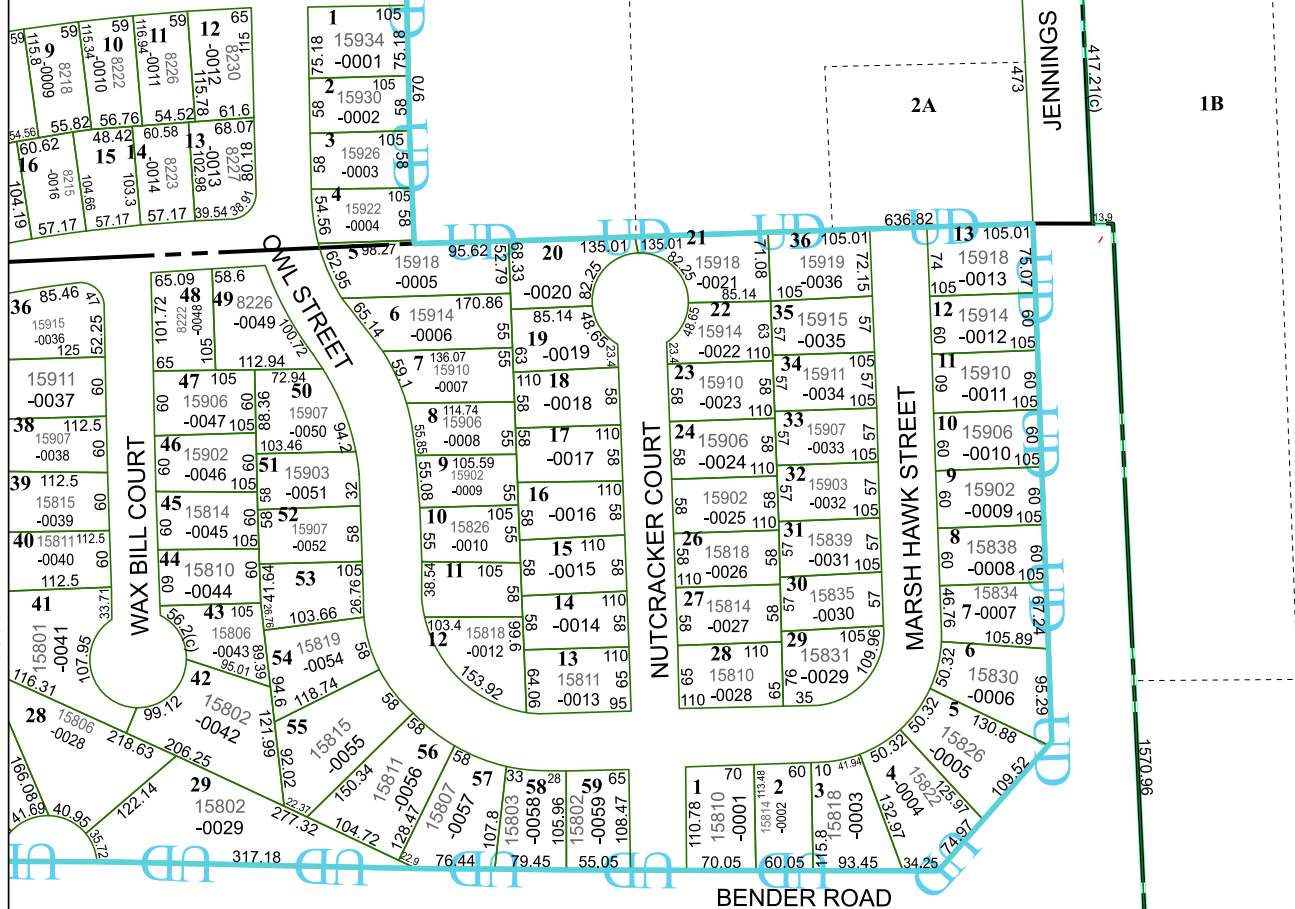


5665A4

HUMBLE PARK

064-210



5665A12

Harris Central Appraisal District



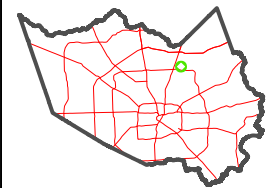
0 45 90 180 Feet

PUBLICATION DATE: 12/30/2023

Geospatial or map data maintained by the Harris Central Appraisal District is for informational purposes and may not have been prepared for or be suitable for legal, engineering, or surveying purposes. It does not represent an on-the-ground survey and only represents the approximate location of property boundaries.



MAP LOCATION



FACET 5665A8

2	3	4	1	2
6	7	8	5	6
10	11	12	9	10

047-093-003-0167
53.5300 AC

5665B5

5665A7