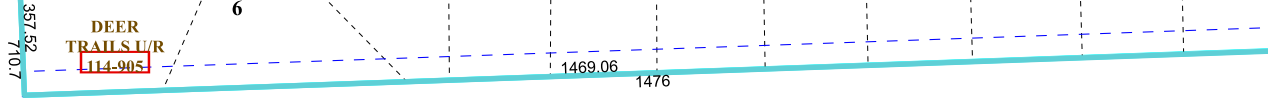


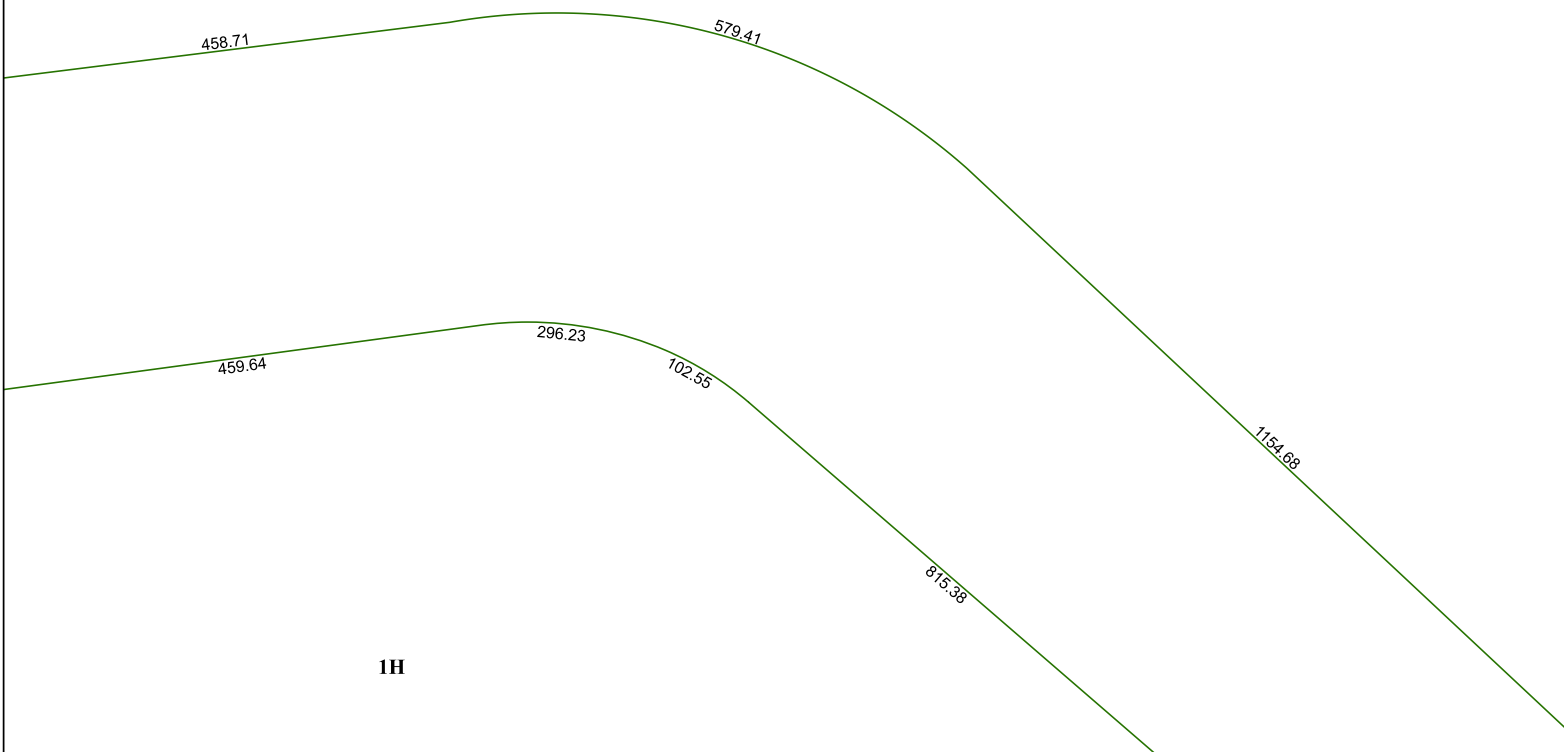
5665B4



1H

1911  
045-006-000-0001  
205.7102 AC

5665B7



1H

5665B12

# Harris Central Appraisal District



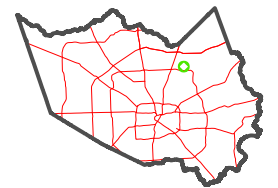
0 45 90 180 Feet

PUBLICATION DATE:  
1/9/2023

Geospatial or map data maintained by the Harris Central Appraisal District is for informational purposes and may **not** have been prepared for or be suitable for legal, engineering, or surveying purposes. It does **not** represent an on-the-ground survey and only represents the approximate location of property boundaries.



### MAP LOCATION



## FACET 5665B8

2	3	4	1	2
6	7	8	5	6
10	11	12	9	10

5765A5