

5665C1

GRACE CHURCH OF HUMBLE  
133-067

133-067-001-0001  
24.5820 AC

1

2089.34

543.98

# Harris Central Appraisal District



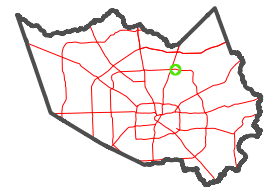
0 45 90 180 Feet

PUBLICATION DATE: 1/13/2025

Geospatial or map data maintained by the Harris Central Appraisal District is for informational purposes and may not be suitable for legal, engineering, or surveying purposes. It does not represent an on-the-ground survey and only represents the approximate location of property boundaries.



MAP LOCATION



## FACET 5665C5

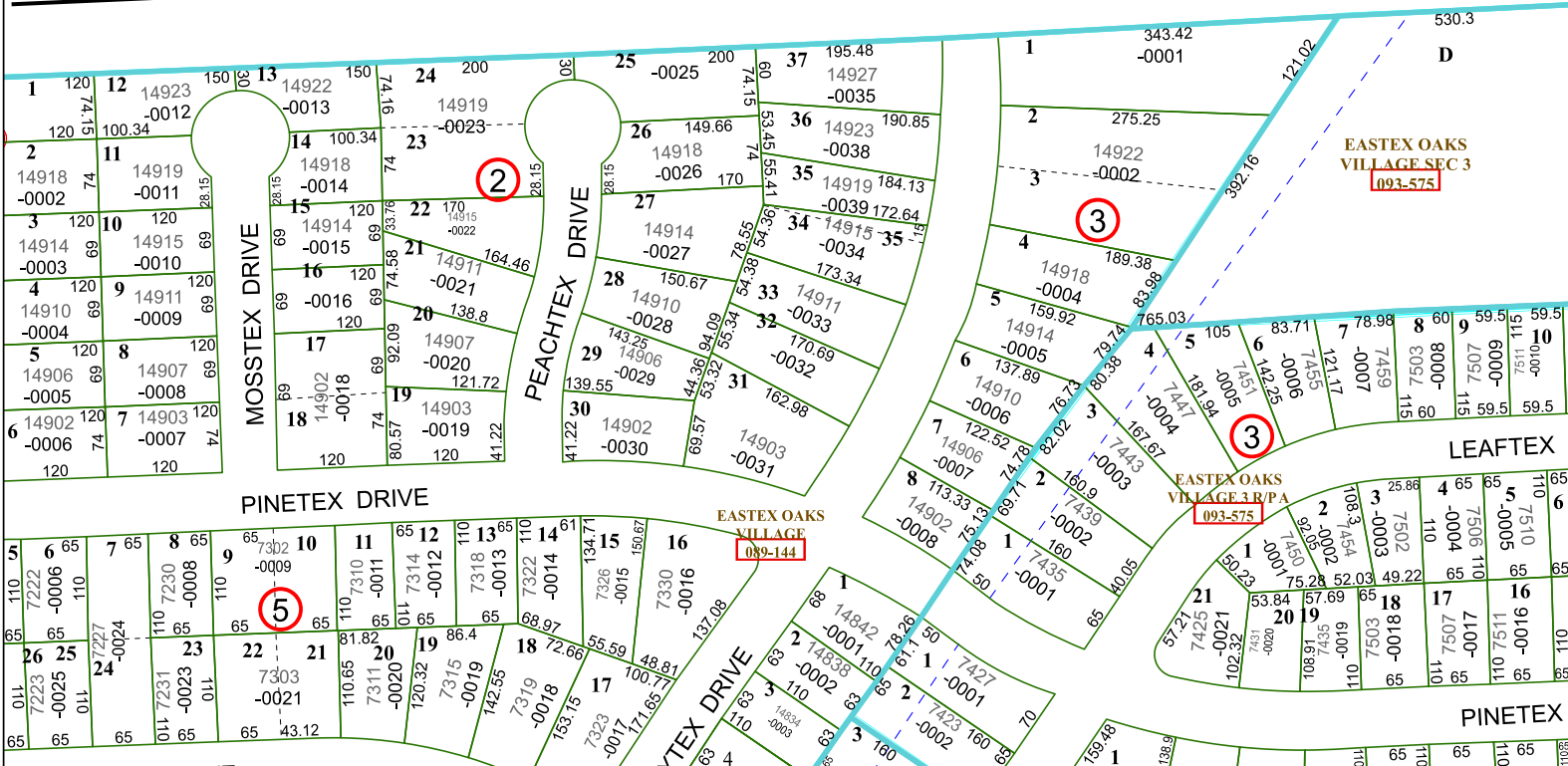
3	4	1	2	3
7	8	5	6	7
11	12	9	10	11

5665C9

LOCKWOOD ROAD

5565D8

5665C6



5665C9