

5666D3

Harris Central Appraisal District



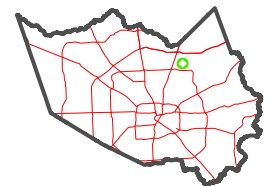
0 45 90 180 Feet

PUBLICATION DATE: 1/9/2023

Geospatial or map data maintained by the Harris Central Appraisal District is for informational purposes and may not have been prepared for or be suitable for legal, engineering, or surveying purposes. It does not represent an on-the-ground survey and only represents the approximate location of property boundaries.



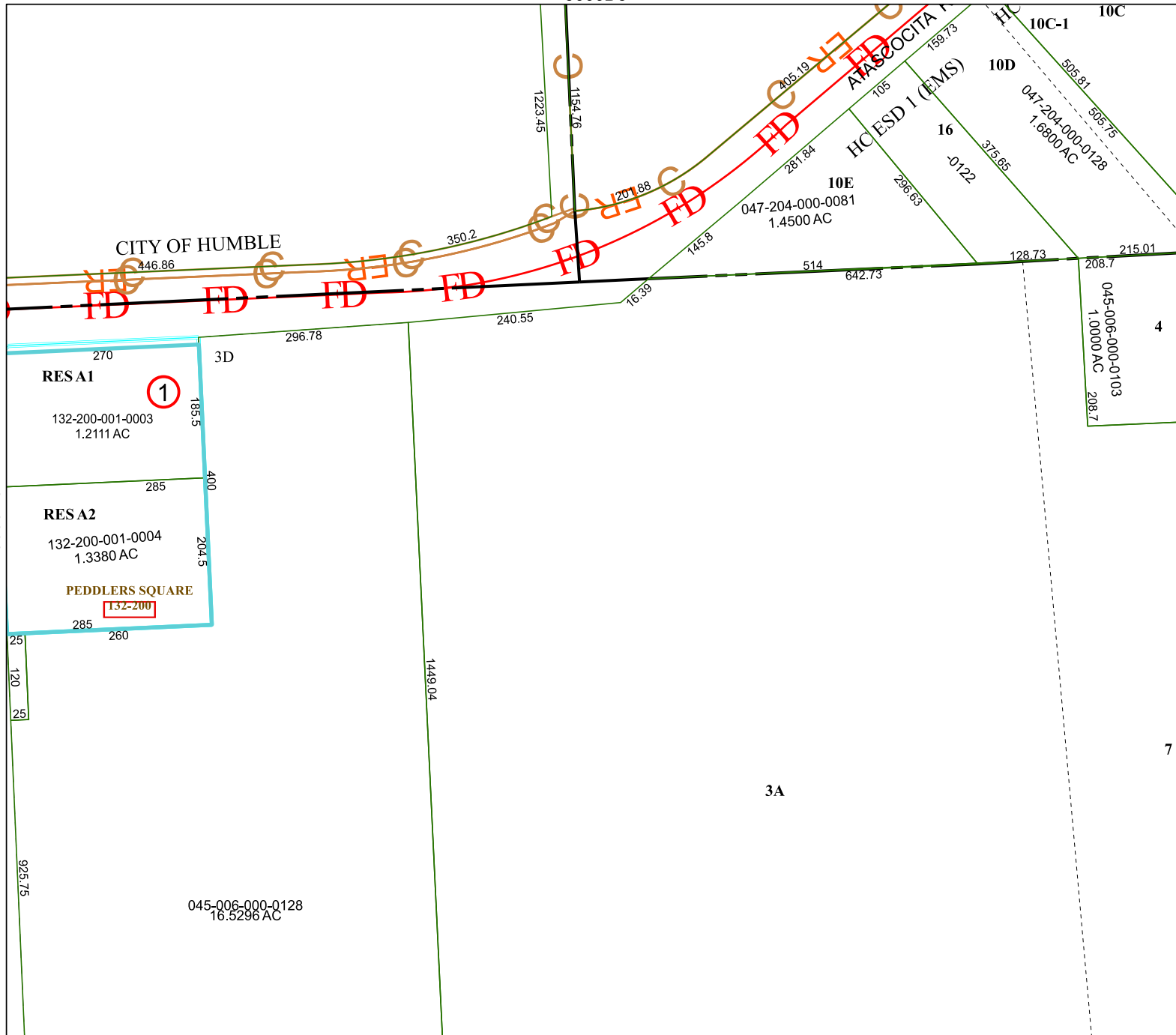
MAP LOCATION



FACET 5666D7

1	2	3	4	1
5	6	7	8	5
9	10	11	12	9

5666D11



5666D6

5666D8

7

3A

CITY OF HUMBLE

RES A1

132-200-001-0003
1.2111 AC

RES A2

132-200-001-0004
1.3380 AC

PEDDLERS SQUARE

132-200

045-006-000-0128
16.5296 AC

10E
047-204-000-0081
1.4500 AC

10C-1
10C

10D
047-204-000-0128
1.6900 AC

HCCESD 1 (EMS)
16
-0122

4

7

1