

5667D2

124-876-001-0001
21.3345 AC

1

NEW COVENANT
CHURCH OF HUMBLE
124-876

Harris Central Appraisal District



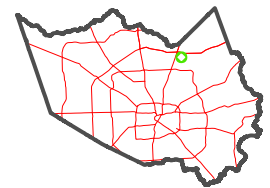
0 45 90 180
Feet

PUBLICATION DATE:
12/30/2023

Geospatial or map data maintained by the Harris Central Appraisal District is for informational purposes and may not have been prepared for or be suitable for legal, engineering, or surveying purposes. It does not represent an on-the-ground survey and only represents the approximate location of property boundaries.

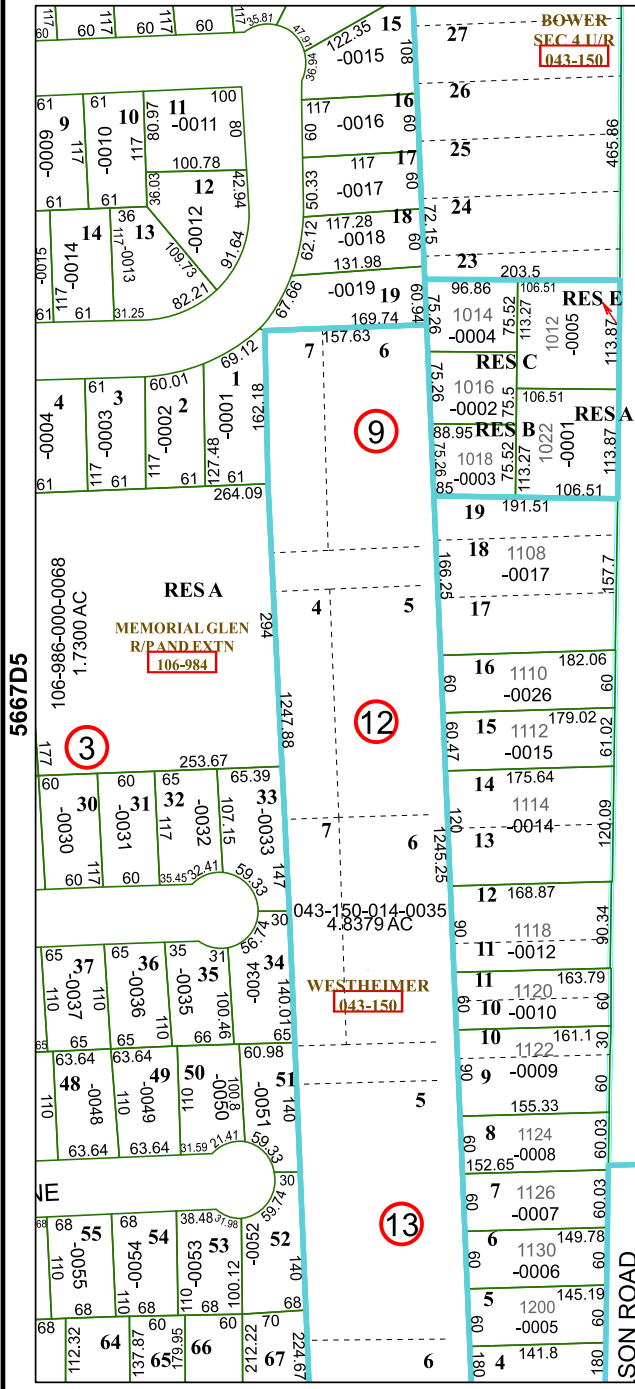


MAP LOCATION



FACET 5667D6

4	1	2	3	4
8	5	6	7	8
12	9	10	11	12



710.7

1647.68
1003.81

24

367.2

HERMANN G H
043-150

043-150-014-0022
37.6000 AC

23

53.1

176.25

364.67

5667D10

1

9

12

13

3