

# Harris Central Appraisal District



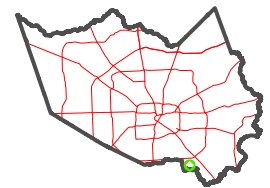
0 45 90 180 Feet

PUBLICATION DATE:  
1/13/2025

Geospatial or map data maintained by the Harris Central Appraisal District is for informational purposes and may not have been prepared for or be suitable for legal, engineering, or surveying purposes. It does not represent an on-the-ground survey and only represents the approximate location of property boundaries.



MAP LOCATION

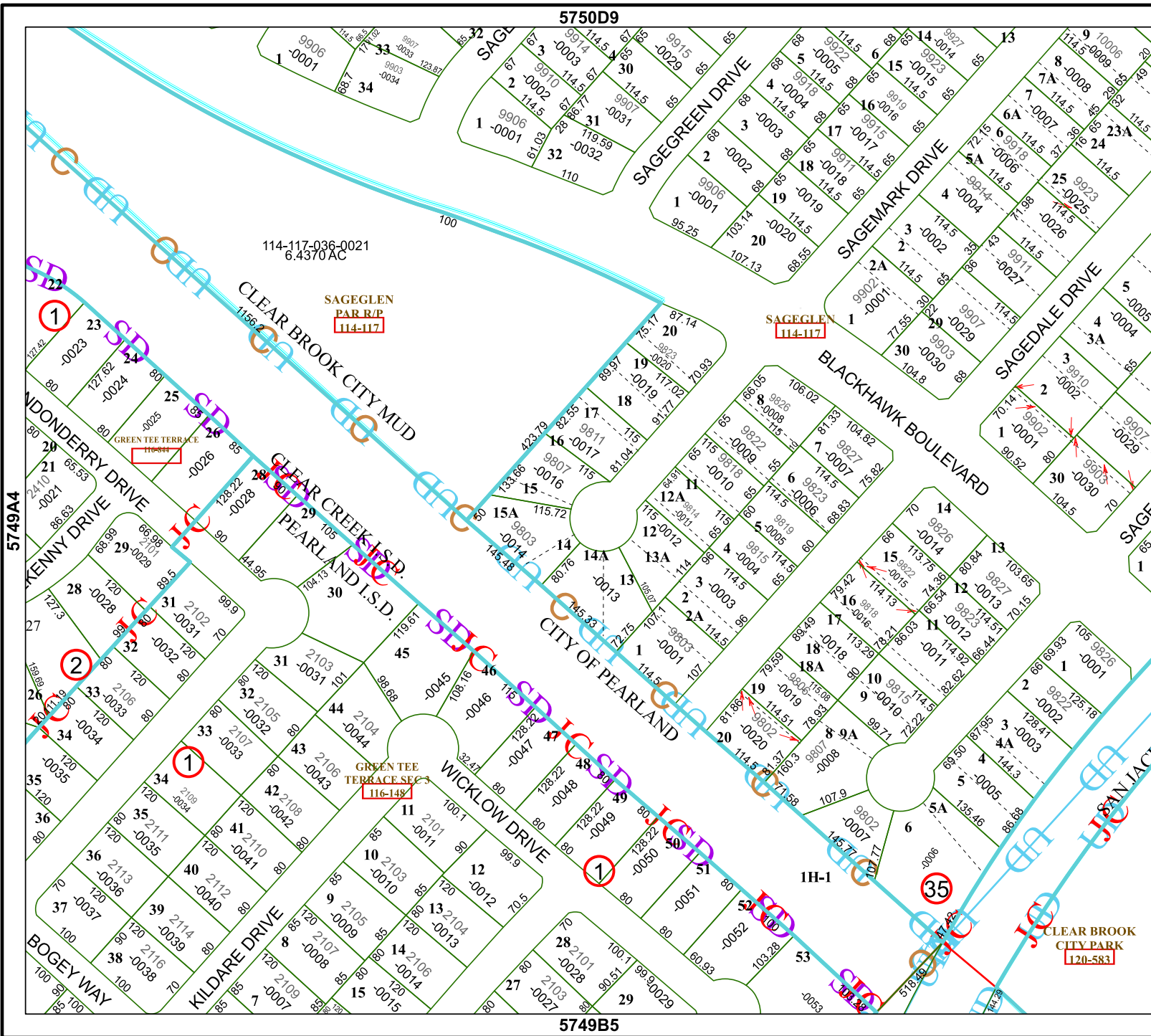


## FACET 5749B1

11	12	9	10	11
3	4	1	2	3
7	8	5	6	7

5750D9

5749B5



114-117-036-0021  
6.4370 AC

SAGEGLEN  
PAR/R/P  
114-117

SAGEGLEN  
114-117

GREEN TEE  
TERRACE SEC 3  
116-148

CLEAR BROOK  
CITY PARK  
120-583

5749A4

5749B2