

5749A11

Harris Central Appraisal District



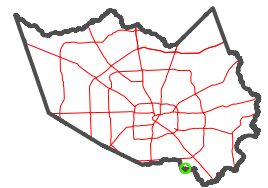
0 45 90 180 Feet

PUBLICATION DATE:
2/13/2024

Geospatial or map data maintained by the Harris Central Appraisal District is for informational purposes and may not have been prepared for or be suitable for legal, engineering, or surveying purposes. It does not represent an on-the-ground survey and only represents the approximate location of property boundaries.



MAP LOCATION



FACET

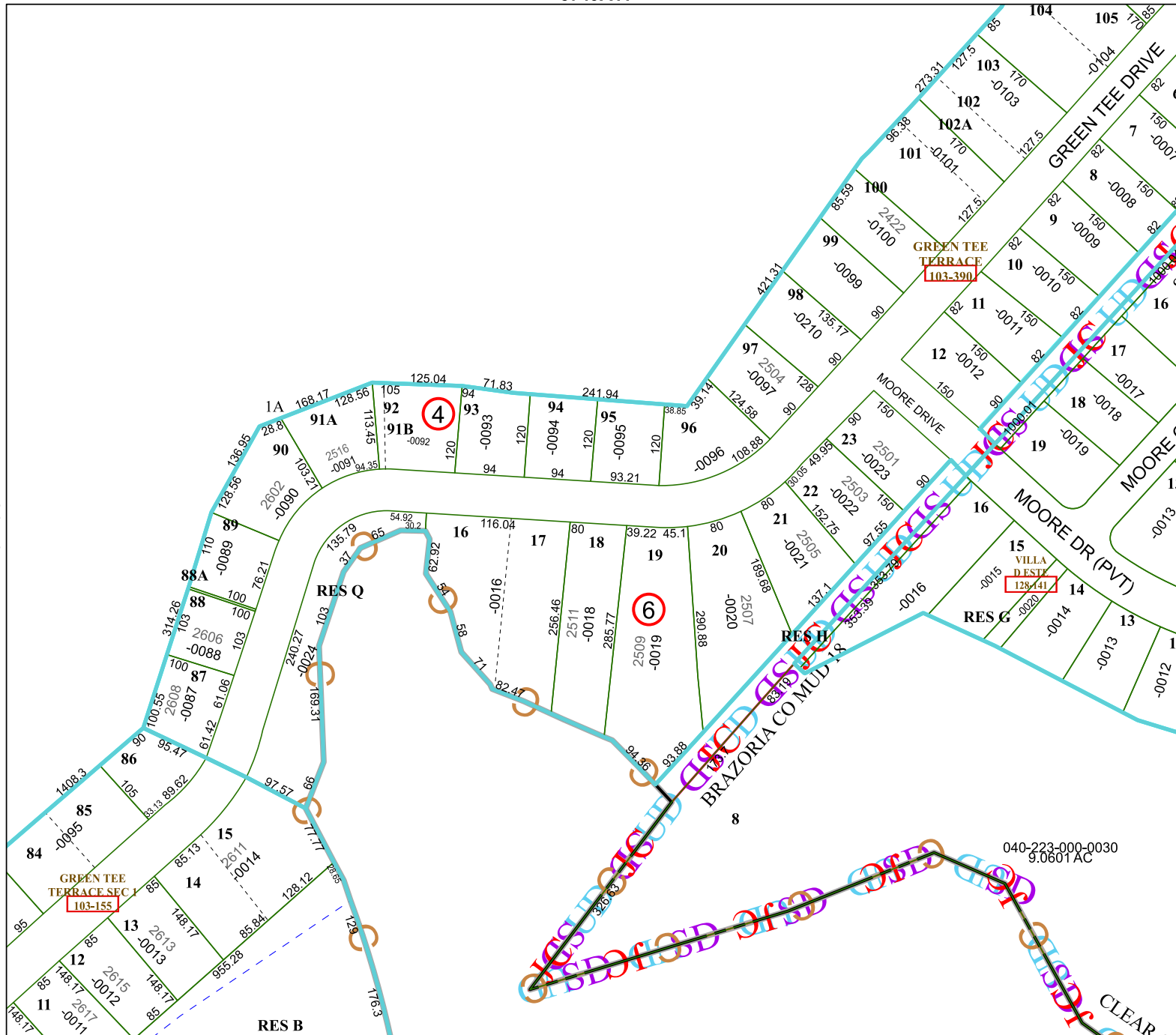
5749C3

9	10	11	12	9
1	2	3	4	1
5	6	7	8	5

5749C2

5749C4

5749C7



040-223-000-0030
9.0601 AC