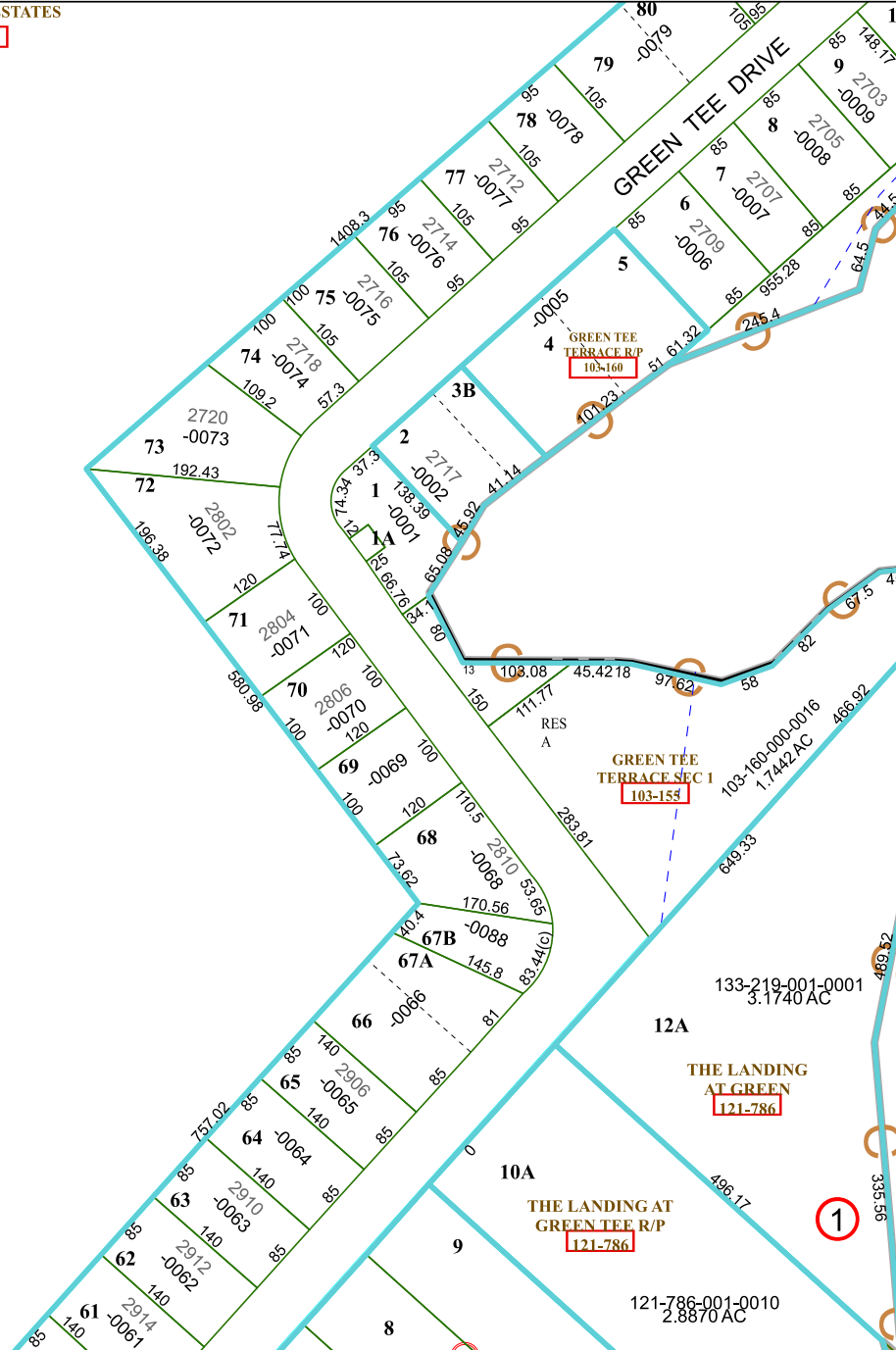


5749C2

GOLFCREST ESTATES

135-041

5749C5



5749C10

Harris Central Appraisal District



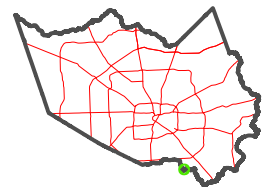
0 45 90 180 Feet

PUBLICATION DATE: 2/13/2024

Geospatial or map data maintained by the Harris Central Appraisal District is for informational purposes and may not have been prepared for or be suitable for legal, engineering, or surveying purposes. It does not represent an on-the-ground survey and only represents the approximate location of property boundaries.



MAP LOCATION



FACET 5749C6

4	1	2	3	4
8	5	6	7	8
12	9	10	11	12

1