

# Harris Central Appraisal District

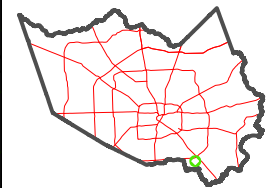


0 45 90 180 Feet

PUBLICATION DATE: 1/9/2023

Geospatial or map data maintained by the Harris Central Appraisal District is for informational purposes and may not have been prepared for or be suitable for legal, engineering, or surveying purposes. It does not represent an on-the-ground survey and only represents the approximate location of property boundaries.

MAP LOCATION

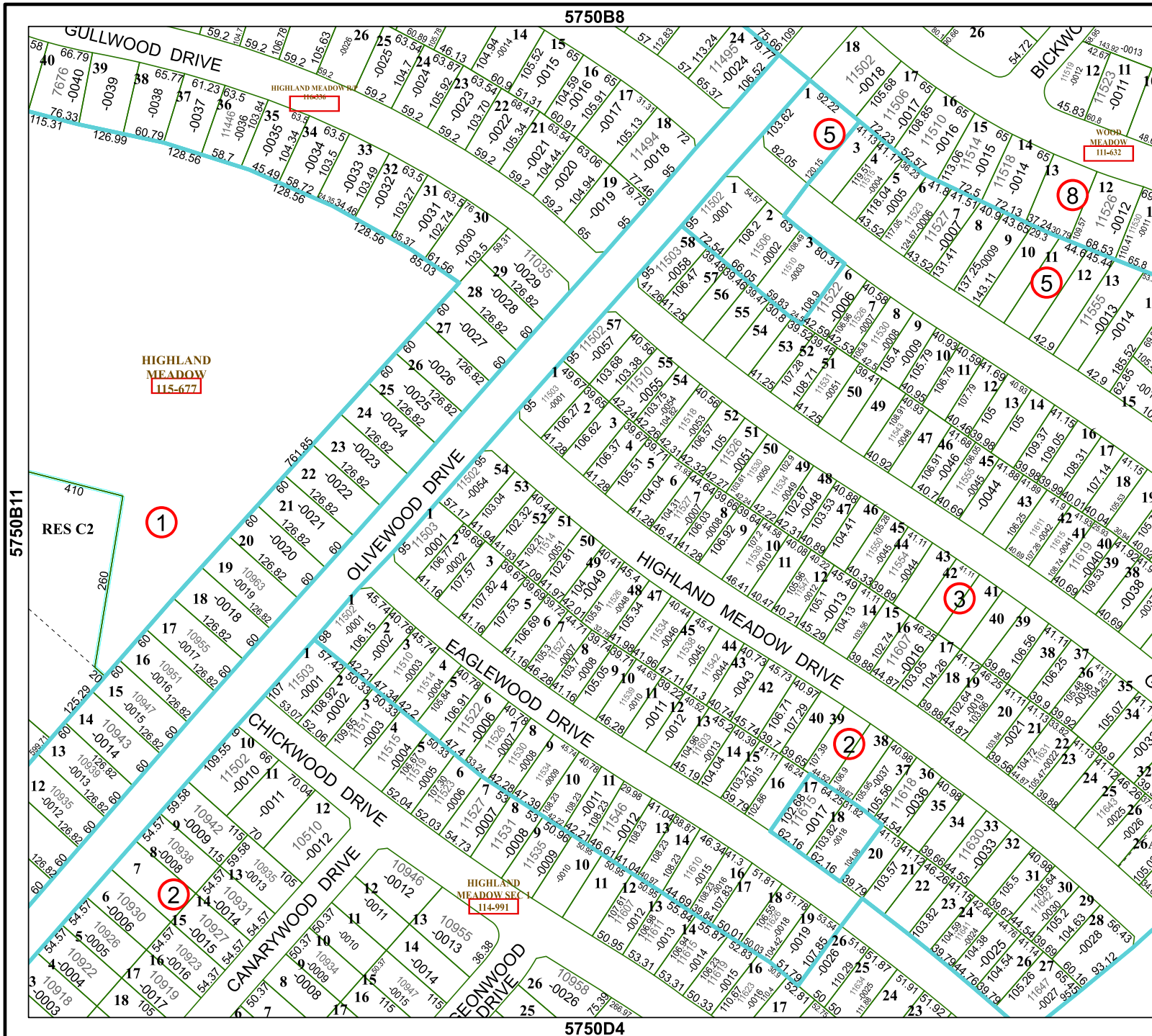


## FACET 5750B12

6	7	8	5	6
10	11	12	9	10
2	3	4	1	2

5750B8

5750D4



HIGHLAND MEADOW  
115-677

HIGHLAND MEADOW  
111-632

1

2

5

8

5

3

2