

Harris Central Appraisal District

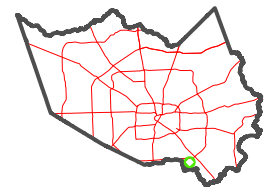


0 45 90 180 Feet

PUBLICATION DATE:
1/9/2023

Geospatial or map data maintained by the Harris Central Appraisal District is for informational purposes and may not have been prepared for or be suitable for legal, engineering, or surveying purposes. It does not represent an on-the-ground survey and only represents the approximate location of property boundaries.

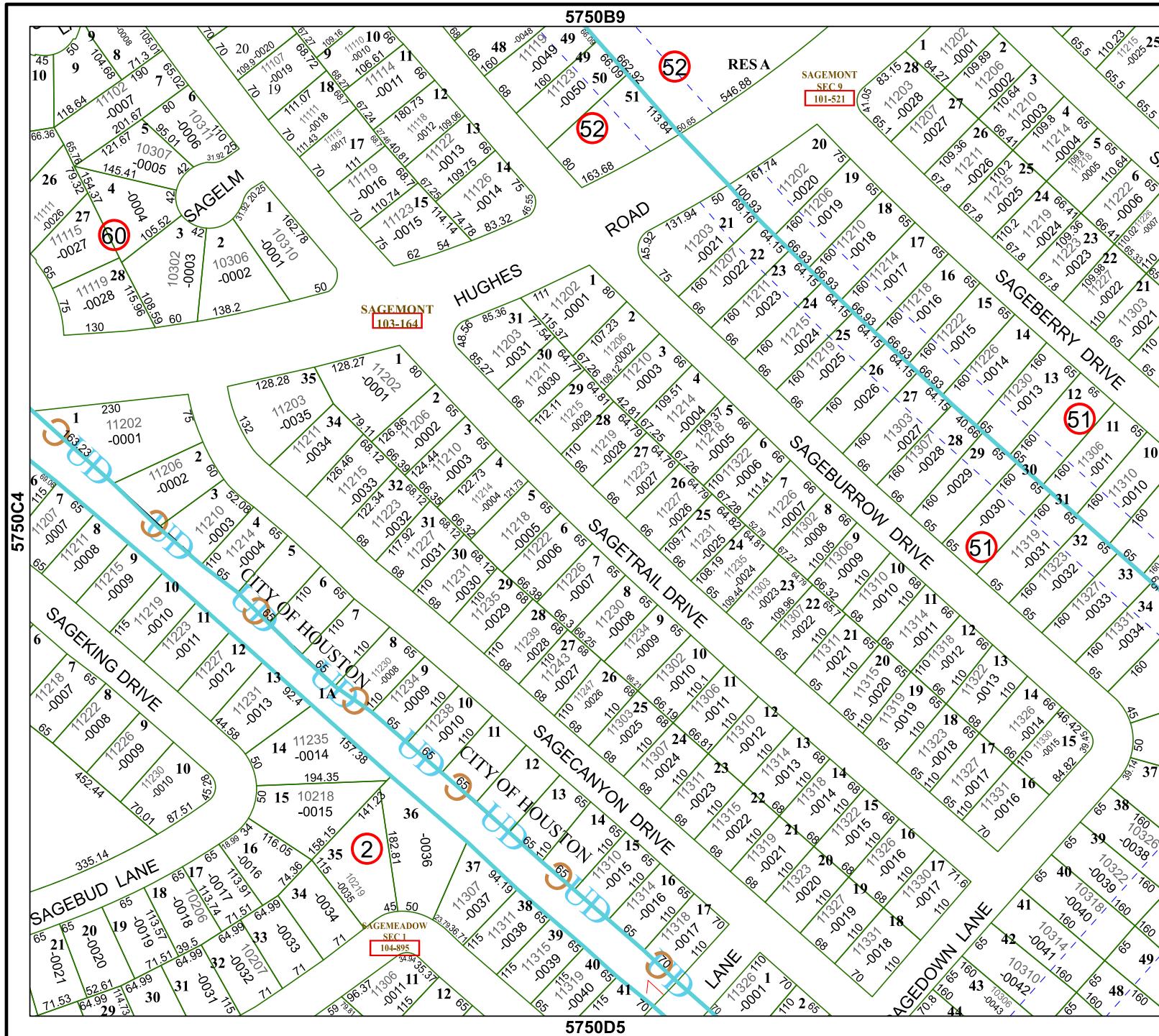
MAP LOCATION



FACET

5750D1

11	12	9	10	11
3	4	1	2	3
7	8	5	6	7



5750B9

52

52

SAGEMONT
SEC 9
101-521

51

51

51

2

5750D5

5750C4

5750D2

SAGEMONT
103-164

SAGEMeadow
SEC 1
104-895

CITY OF HOUSTON

CITY OF HOUSTON

CITY OF HOUSTON

CITY OF HOUSTON