

Harris Central Appraisal District

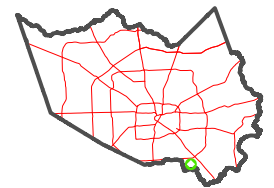


0 45 90 180 Feet

PUBLICATION DATE: 1/9/2023

Geospatial or map data maintained by the Harris Central Appraisal District is for informational purposes and may not have been prepared for or be suitable for legal, engineering, or surveying purposes. It does not represent an on-the-ground survey and only represents the approximate location of property boundaries.

MAP LOCATION

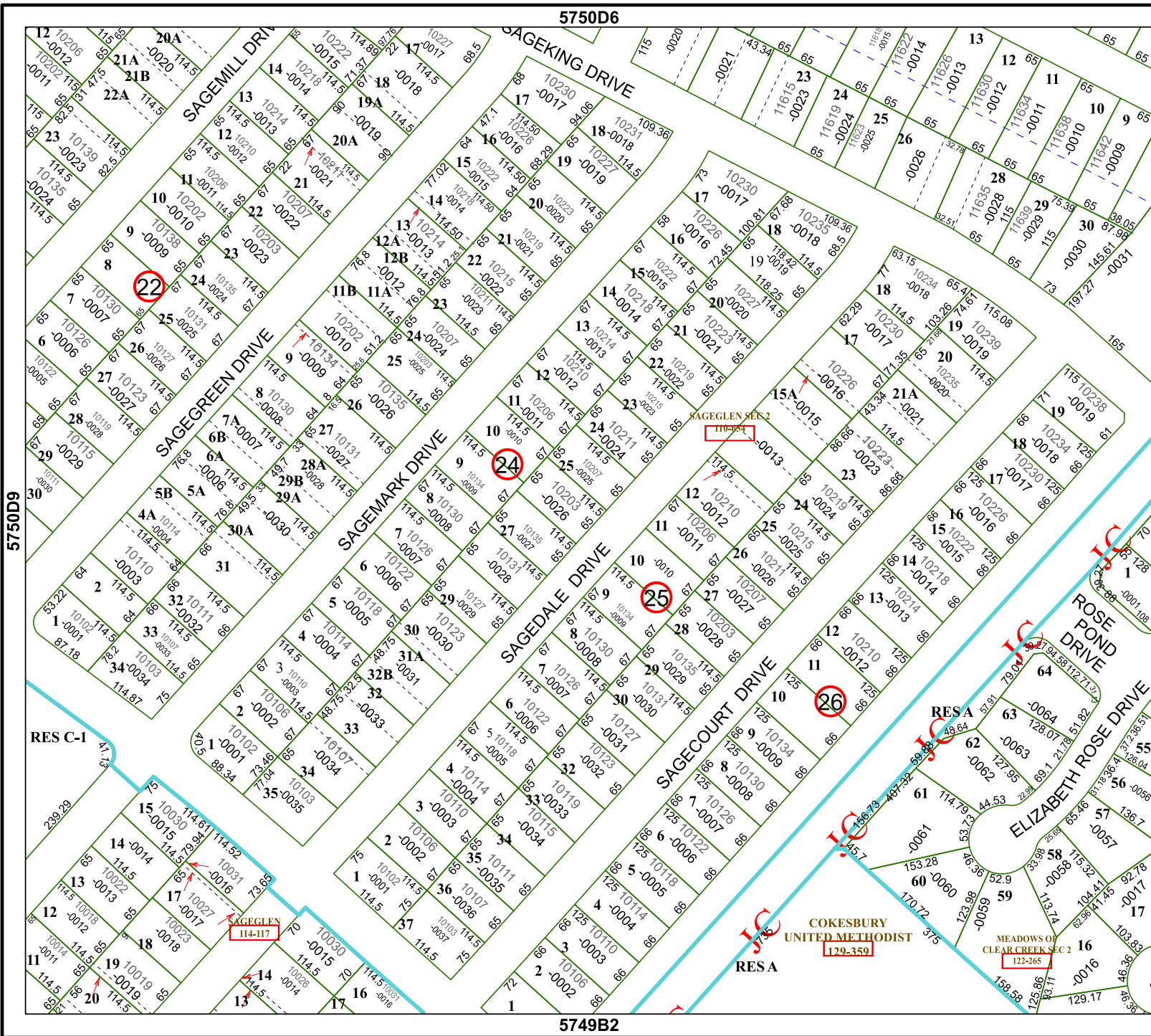


FACET 5750D10

8	5	6	8
12	9	10	12
4	1	2	4

5750D6

5749B2



5750D9

5750D11

RES A
COKEBURY UNITED METHODIST
129-359

MEADOWS OF CLEAR CREEK SEC 2
122-265

