

5752D10

Harris Central Appraisal District



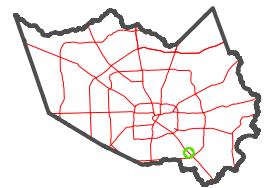
0 45 90 180 Feet

PUBLICATION DATE: 4/8/2024

Geospatial or map data maintained by the Harris Central Appraisal District is for informational purposes and may not have been prepared for or be suitable for legal, engineering, or surveying purposes. It does not represent an on-the-ground survey and only represents the approximate location of property boundaries.



MAP LOCATION



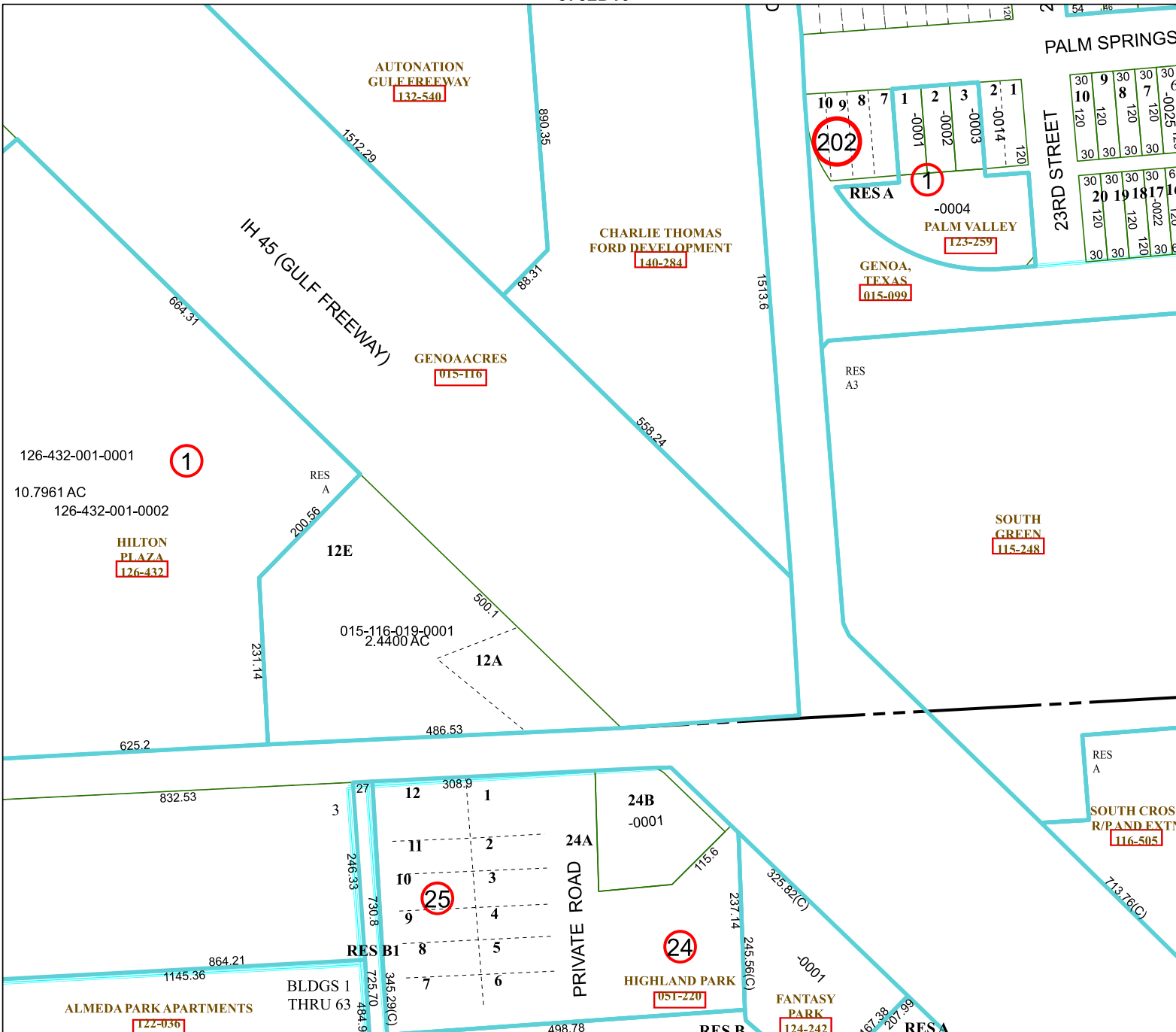
FACET 5751B2

12	9	10	11	12
4	1	2	3	4
8	5	6	7	8

5751B1

5751B3

5751B6



AUTONATION GULF FREEWAY
132-540

CHARLIE THOMAS FORD DEVELOPMENT
140-284

GENOACRES
015-116

HILTON PLAZA
126-432

SOUTH GREEN
115-248

SOUTH CROSS R/P AND EXTN
116-505

ALMEDA PARK APARTMENTS
122-036

HIGHLAND PARK
051-220

FANTASY PARK
124-242

BLDGS 1 THRU 63

IH 45 (GULF FREEWAY)

PALM SPRINGS

23RD STREET

RESA

-0004 PALM VALLEY
123-259

GENOA, TEXAS
015-099

RES A3

RES A

24B
-0001

PRIVATE ROAD

24

HIGHLAND PARK
051-220

FANTASY PARK
124-242

BLDGS 1 THRU 63

RES B1

RES B

RES A