

5751D4

GULF POINTE DRIVE

RES A

BELLAGIO AT  
GULF POINTE APTS  
123-766

218.94  
119-374-001-0001  
1.1970 AC  
RES A

GULF POINTE  
PARK  
119-374



RES B

119-374-001-0002  
1.1830 AC  
206.45

RES A

127-625-001-0001  
1.0450 AC



RES B

127-625-001-0002  
1.1700 AC  
EPR GULF POINTE  
PARK REPLAT NO 1  
127-625

RES D

119-374-002-0002  
1.4040 AC

AMC GULF  
POINTE  
119-006



119-006-001-0001  
33.9800

# Harris Central Appraisal District



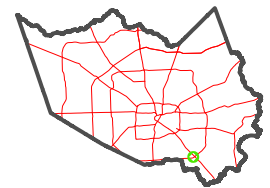
0 45 90 180  
Feet

PUBLICATION DATE:  
1/9/2023

Geospatial or map data maintained by the Harris Central Appraisal District is for informational purposes and may not have been prepared for or be suitable for legal, engineering, or surveying purposes. It does not represent an on-the-ground survey and only represents the approximate location of property boundaries.



MAP LOCATION



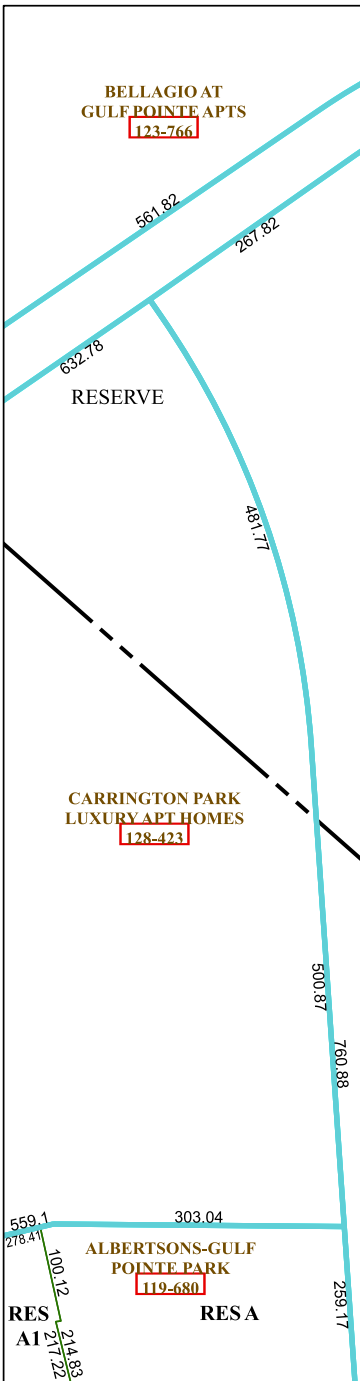
## FACET 5751D8

2	3	4	1	2
6	7	8	5	6
10	11	12	9	10

5751D12

5751D7

5851C5



559.1  
278.4  
100.12  
214.83  
217.22  
RES A1

303.04  
ALBERTSONS-GULF  
POINTE PARK  
119-680  
RES A

CARRINGTON PARK  
LUXURY APT HOMES  
128-423

RESERVE

RESERVE

DICKINSON ROAD

GULF POINTE  
PARK  
119-003

74.01

365

229.82

175.83

653.75

464.96

54.09

665.35

163.7

159.54

500.87  
760.88  
258.17

481.17

267.82

561.82

632.78

310.99

160.24

288.78

183.48