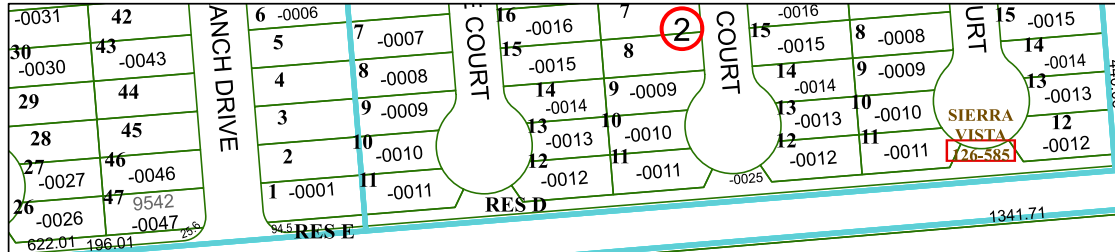


5752C2



STERLING COURT
132-112

Harris Central Appraisal District



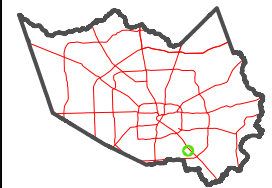
0 45 90 180 Feet

PUBLICATION DATE:
1/9/2023

Geospatial or map data maintained by the Harris Central Appraisal District is for informational purposes and may not have been prepared for or be suitable for legal, engineering, or surveying purposes. It does not represent an on-the-ground survey and only represents the approximate location of property boundaries.



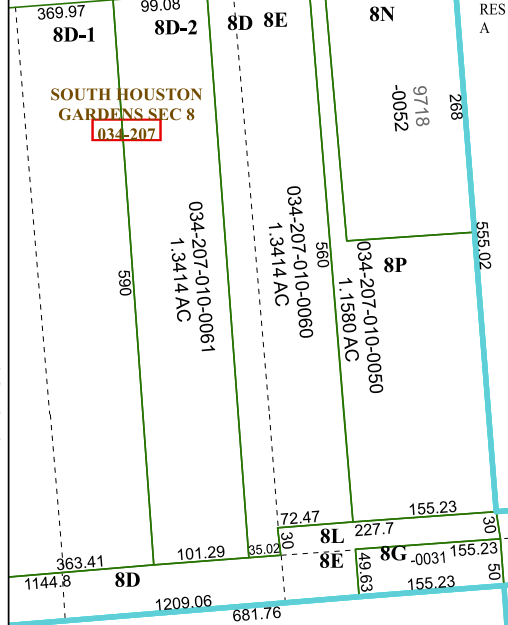
MAP LOCATION



FACET 5752C6

4	1	2	3	4
8	5	6	7	8
12	9	10	11	12

VENOR STREET



PASADENA ISD ELEMENTARY SCHOOL NO 36
135-139

IH 45 AND ALMEDA SHOPPING CENTER
129-785

ALMEDA REH
144-456

GENOAACRES
015-116

015-115-010-0010
8.6400 AC

144-456-001-0001
4.3217 AC

015-115-010-0014
2.7260 AC

5752C10

5752C5

5752C7

10

1

1