

Harris Central Appraisal District



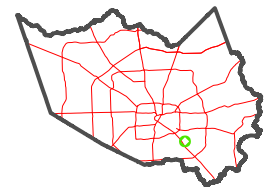
0 45 90 180 Feet

PUBLICATION DATE: 1/9/2023

Geospatial or map data maintained by the Harris Central Appraisal District is for informational purposes and may not have been prepared for or be suitable for legal, engineering, or surveying purposes. It does not represent an on-the-ground survey and only represents the approximate location of property boundaries.



MAP LOCATION

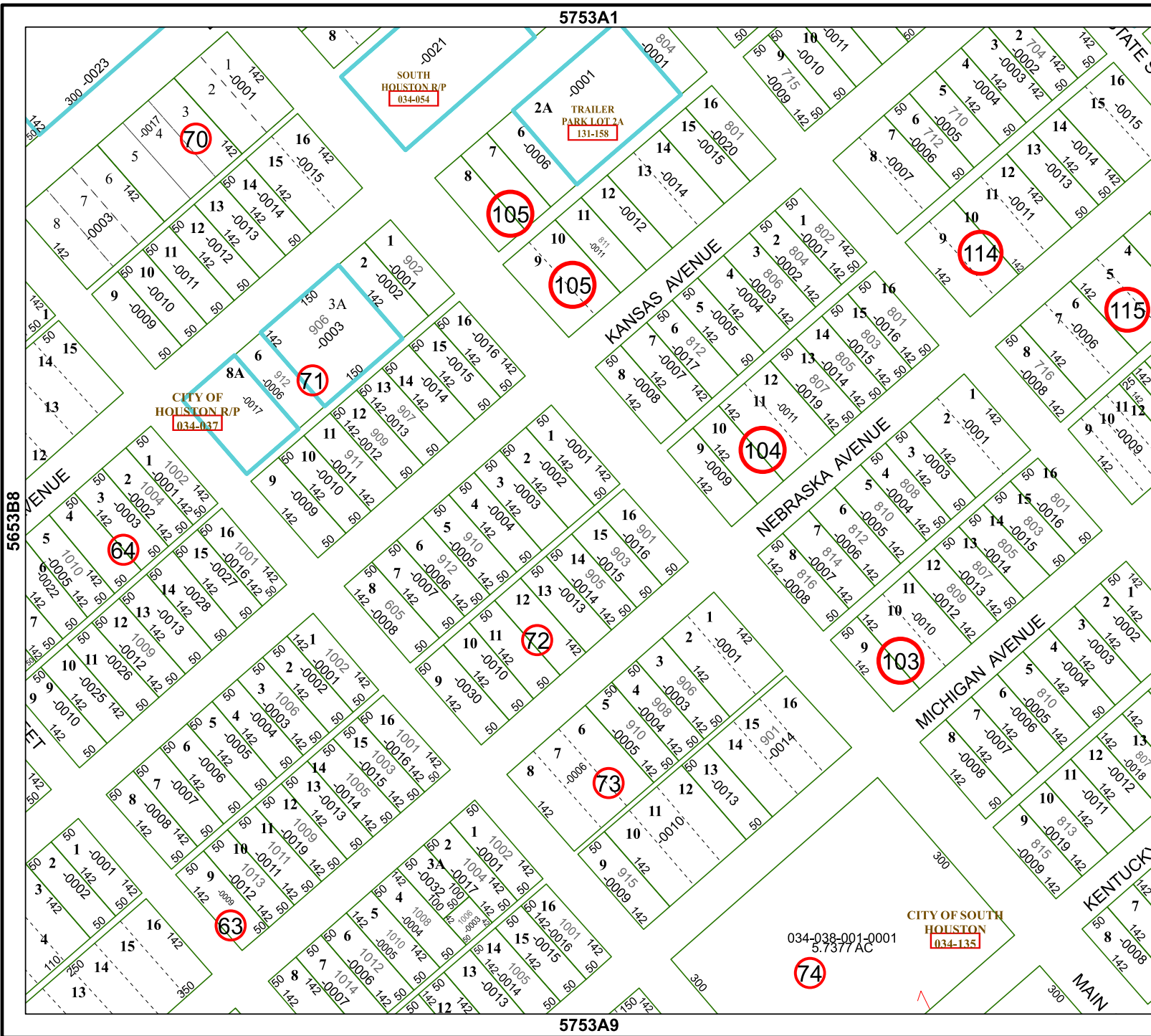


FACET 5753A5

| | | | | |
|----|----|---|----|----|
| 3 | 4 | 1 | 2 | 3 |
| 7 | 8 | 5 | 6 | 7 |
| 11 | 12 | 9 | 10 | 11 |

5753A1

5753A9



SOUTH HOUSTON R/P
034-054

2A TRAILER PARK LOT 2A
131-158

CITY OF HOUSTON R/P
034-037

CITY OF SOUTH HOUSTON
034-135

034-038-001-0001
5.7377 AC

5653B8

5753A6

MAIN